

# Student success

## Where are our alumni now?

Wherever you want to go, INTO London will help you get there. Over the past 10 years, we're proud to have built trusted relationships with respected universities across the UK and Europe. INTO London students have achieved places at a wide range of universities - including those in the global top 100, Russell Group and London.

Since the Centre opened in 2013, INTO London students have progressed to:

**100+**  
universities  
in the UK and  
overseas

**19 Russell  
Group**  
universities

**13 global top  
100**  
universities\*

**30+** institutions  
in London

**7 global top 100**  
art schools^

**5 of the 6**  
**colleges** at the  
University of the  
Arts London

\*QS World University Rankings 2024

^QS World University Subject Rankings 2023

# High grades, high success.

Did you know achieving over 70% in a pathway programme at INTO London is equivalent to scoring A grades?

Our best performing students have gone on to some of the most competitive universities and degrees in the UK, including:

University	Degree	Academic Grade	Nationality
Queen Mary, University of London	MBChB Medicine - Malta Campus	A*A*A*A*A	South Korea
The University of Manchester	BEng (Hons) Electrical and Electronic Engineering	94%	Malaysia
University of Bradford	BSc (Hons) Physiotherapy	91%	Hong Kong
University of Leeds	BSc (Hons) Computer Science and Mathematics	89%	Indonesia
Lancaster University	BSc (Hons) Mechatronics	89%	Thailand
Queen Mary, University of London	BSc (Hons) Actuarial Science with Professional Placement	89%	Indonesia
Durham University	BSc (Hons) Business and Management	87%	Chile
King's College London	BSc (Hons) Biomedical Sciences	86%	Taiwan
University of Birmingham	BEng (Hons) Chemical Engineering	84%	Indonesia
University of Leeds	BSc (Hons) Banking and Finance	83%	India
King's College London	BSc (Hons) Computer Science with Robotics	83%	Egypt
Queen Mary, University of London	BSc (Hons) Electrical and Electronic Engineering	82%	China P.R.
University of Nottingham	BEng (Hons) Electronic and Computer Engineering	82%	Nigeria
Queen Mary, University of London	BSc (Hons) Business Management	80%	China P.R.
University of Leeds	BSc (Hons) Natural Sciences	80%	Brazil

# Meet our students

Meet some of our alumni who have left us destined to progress to some of the most popular universities and competitive degrees in the past 10 years.




A\* A\* A\* A\* A\*

**Queen Mary, University of London**  
MBChB Medicine - Malta Campus\*  
Nara, South Korea



80%

**King's College London**  
BSc (Hons) Biomedical Sciences  
Tanakrit, Thailand



86%

**Queen Mary, University of London**  
BSc (Hons) Business Management  
Jane, Malaysia



75%

**University of Westminster**  
BSc (Hons) International Business  
Onnapha, Laos



83%

**University of Leeds**  
BSc (Hons) Banking and Finance  
Yug, India



80%

**University of Birmingham**  
BEng (Hons) Chemical Engineering  
Vincent, Indonesia

\*Nara has received an unconditional offer for Queen Mary, University of London (Malta Campus) and has confirmed her place there for September 2024.



# Art student success

Our art foundation is designed for creative and ambitious students aiming for top global art schools. Meet some of our successful alumni.



## University of the Arts London

BA (Hons) Fashion Styling and Promotion  
Sara, UK



## Goldsmiths, University of London

BA (Hons) Design  
Joy, China P.R.



## Kingston University

BA (Hons) Interior Design  
Fazila, Pakistan



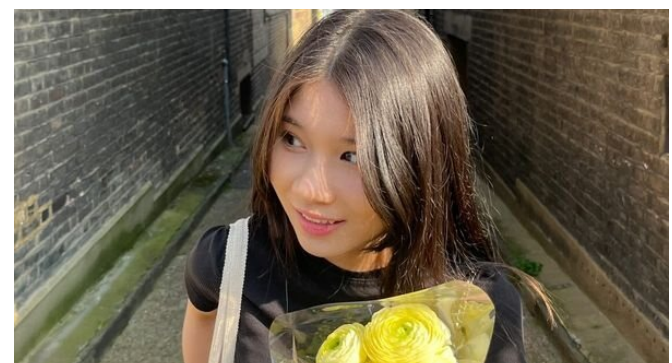
## Goldsmiths, University of London

BA (Hons) Fine Art (Extended)  
Kate, Russia



## The Glasgow School of Art

BA (Hons) Fine Art Photography  
Pengyi, China P.R.



## University of the Arts London

BA (Hons) Graphic Branding and Identity  
Neath, Cambodia



# Progression to top UK universities

Over the years our students have progressed onto a wide range of popular top ranked and Russell Group Universities including:

## **University of Birmingham**

Accounting and Finance  
Business Management  
Chemical Engineering  
Civil Engineering  
Economics  
Electrical and Electronic Engineering  
Law  
Mechanical Engineering

## **Cardiff University**

Architecture  
Architectural Engineering  
Business Management  
Media, Journalism and Culture

## **Durham University**

Business and Management with Business Placement  
Business and Management with Study Aboard

## **The University of Edinburgh**

Biological Sciences (Genetics)  
MA Sociology

## **University of Exeter**

MSc Accounting and Taxation  
Business and Management  
Business Analytics with Industrial Experience  
Criminology  
Psychology

## **University of Glasgow**

MSc Management with Enterprise and Business Growth

## **King's College London**

Accounting and Finance  
Biomedical Sciences  
Computer Science with Robotics  
Digital Culture  
International Management  
Liberal Arts  
Nutritional Sciences  
Pharmacology  
Religion, Philosophy and Culture

## **Lancaster University**

Accounting and Finance  
Business Management  
Chemistry  
Environmental Science  
Finance and Economics  
Fine Art  
MA International Relations  
Marketing Management  
Mechatronics

## **University of Leeds**

Banking and Finance  
Computer Science and Mathematics  
Natural Sciences  
Computer Science with High-Performance Graphics and Games  
Engineering  
Electronics and Computer Engineering  
LLM

## **University of Liverpool**

International Business

All degrees are undergraduate unless otherwise stated as master's degrees

# Progression to top UK universities

## **The University of Manchester**

Computer Systems  
Engineering with Industrial Experience  
Mathematics with Finance  
Pharmacy

## **Newcastle University**

Accounting and Finance  
Business Management  
Computer Science  
Education  
Electrical and Electronic Engineering  
International Business Management with Placement

## **University of Nottingham**

Electronic and Computer Engineering  
Food Science  
International Media and Communication Skills Management

## **Queen's University Belfast**

Architecture  
Computer Science  
LLB Law  
MSc Marketing

## **Queen Mary, University of London**

Accounting and Finance  
Accounting and Management  
Actuarial Science with Professional Placement  
Aerospace Engineering  
Business Management  
Computer Science  
Electric and Electronic Engineering  
International Relations with Business Management  
MSc Investment and Finance  
MSc Marketing  
Marketing and Management  
Mathematics  
Mechanical Engineering  
Politics  
Politics and International Relations  
MSc Wealth Management

## **University of Sheffield**

Electronic and Computer Engineering  
Food Science  
International Media and Communication Skills Management

## **University of Southampton**

Acoustical Engineering  
MA Fashion Management

## **University of Warwick**

Management

## **University of York**

Business and Management  
Business of the Creative Industries  
Computer Science  
Interactive Media  
International Relations  
MSc Management  
Philosophy, Politics and Economics

All degrees are undergraduate unless otherwise stated as master's degrees

# Progression to London universities

Staying in London is a priority for many of our students. Successful students have progressed onto a range of universities in London including:

## University of the Arts London

Animation  
Architecture  
Design Management and Cultures  
Fashion Styling and Promotion  
Fine Art: Drawing  
Film Practice  
Furniture and Product Design  
Graphic Communication  
Graphic Identity and Branding  
Interactive Design  
Interior Design  
Interior and Spatial Design  
Illustration and Visual Journalism Media  
Media Communications  
Photography  
Psychology of Fashion  
Public Relations  
Textile Design

## Birkbeck, University of London

Accounting and Finance  
Business Management  
Marketing  
Law  
MSc Banking and Finance  
MSc Financial Risk Management  
MSc Management with HRM

## Brunel University London

Accounting and Business Management  
Biomedical Sciences  
Business and Management  
Computer Science  
Electronic and Electrical Engineering

## City, University of London

Aeronautical Engineering  
Civil Engineering  
Economics with Accounting  
Law  
Mechanical Engineering

## University of East London

Accounting and Finance  
Architecture  
Biomedical Sciences  
Civil Engineering  
Fashion Textiles  
LLM Law  
Mechanical Engineering  
Psychology  
Surveying and Mapping Sciences

## University of Greenwich

Accounting and Finance  
Advertising and Marketing Communications  
Architecture  
Business Management  
Business with Marketing  
Civil Engineering  
Film and Television Production  
Graphic and Digital Design  
Hospitality Management  
LLB Law  
Politics and International Relations

All degrees are undergraduate unless otherwise stated as master's degrees



# Progression to London universities

## **Goldsmiths, University of London**

Arts Management  
Business Computing and Entrepreneurship  
Design  
Digital Arts Computing  
Fine Art (Extended)  
Management and Entrepreneurship  
Management with Economics  
Management with Marketing  
Marketing  
Media and Communications  
Media and Sociology  
MSc Consumer Behaviour  
Music

## **King's College London**

Biomedical Sciences  
Computer Science with Robotics  
Accounting and Finance  
Liberal Arts  
International Management  
Pharmacology  
Religion, Philosophy and Culture  
Digital Culture  
Nutritional Sciences

## **Kingston University**

Architecture  
Biomedical Science  
Business Management  
Entrepreneurship and Innovation Management  
Fashion  
Financial Economics  
Graphic Design  
Interior Design  
International Law  
Journalism and Media

## **Istituto Marangoni London**

Fashion  
Fashion Design and Marketing  
Fashion Design and Menswear  
Fashion Styling  
Fashion Business & Buying  
Interior Design and Lighting

## **London Metropolitan University**

Accounting and Finance  
Architecture  
Design Studio Practice  
Economics and Finance  
Illustration and Animation  
Theatre and Performance

## **London South Bank University**

Accounting and Finance  
Architectural Engineering  
Architecture  
Business Management  
Electrical and Electronic Engineering  
Management with Marketing  
MSc Project Management

## **Middlesex University**

Accounting and Finance  
Advertising, Public Relations and Media  
Banking and Finance  
Business Management  
Computer Networks  
Film  
Graphic Design  
Interior Design  
International Business  
International Tourism  
Management  
Law  
Mechatronics  
Product Design  
Psychology with Neuroscience

All degrees are undergraduate unless otherwise stated as master's degrees

# Progression to London universities

## **Queen Mary, University of London**

Accounting and Finance  
Accounting and  
Management  
Actuarial Science with  
Professional Placement  
Aerospace Engineering  
Business Management  
Computer Science  
Electric and Electronic  
Engineering  
International Relations with  
Business Management  
MSc Investment and  
Finance  
MSc Marketing  
Marketing and  
Management  
Mathematics  
Mechanical Engineering  
Politics  
Politics and International  
Relations  
MSc Wealth Management

## **Ravensbourne University**

Architecture  
Digital Advertising and  
Design  
Digital Photography  
Fashion  
Fashion Buying and Brand  
Management  
Fashion Promotion

## **Regent's University London**

Business Management  
Fashion Marketing  
Film & Screen (TV & Digital  
Media)  
Film, TV and Digital Media  
Production  
Global Business  
Management  
International Design  
International Business  
Liberal Studies  
MSc Luxury Brand  
Management  
MA International Business

## **Royal Holloway, University of London**

Accounting and Finance  
Accounting, Finance and  
Economics  
Biochemistry  
Biomedical Science  
Business and Management  
Economics  
International Relations  
LLB Law  
MA Marketing  
Management  
Management with  
Entrepreneurship  
Management with Human  
Resources  
Management with  
International Business  
Management with  
Marketing  
MSc Entrepreneurship and  
Innovation  
MSc International  
Accounting  
Politics and International  
Relations  
Psychology

All degrees are undergraduate unless otherwise stated as master's degrees

# Progression to London universities

## **SOAS, University of London**

Accounting and Finance  
Law and Arabic  
Management  
Social Anthropology with  
World Philosophies

## **University of West London**

Business Management  
Business Studies with  
Finance  
Hospitality Management  
Media Production  
Nutrition and Food  
Management  
MSc Applied Project  
Management  
Psychology with  
Criminology

## **University of Westminster**

Accounting  
Accounting and Business  
Management  
Architecture  
Architecture and  
Environmental Design  
Biomedical Sciences  
Engineering  
Business Management  
(Entrepreneurship)  
Business Management  
(Digital Business)  
Business Management  
(Economics)  
Business Management  
(Finance)  
Business Management  
(Human Resource  
Management)  
Business Management  
(International Business)  
Business Management  
(Marketing)  
Chinese and Linguistics  
Computer Science  
Construction Management  
Digital Media and  
Communications

## **University of Westminster cont.**

Fashion Business  
Management  
Fashion Merchandise  
Management  
Finance  
Finance and Business  
Management  
Graphic Design  
Human Nutrition  
Interior Architecture  
International Business  
International Marketing  
International Relations  
LLB Law  
Marketing Communications  
Marketing Management  
Media Studies  
Music: Production,  
Performance and Enterprise  
Photography  
Politics and International  
Relations  
Psychology  
Television Production  
Tourism and Events  
Management  
Tourism Planning and  
Management

All degrees are undergraduate unless otherwise stated as master's degrees



Careers in the  
UK and overseas

# The Chief Financial Officer



**Zul, Malaysia**  
Class of 2013-2014

*“I attribute much of my success in adapting to different fields and industries to the skills and academic tools I acquired at INTO. The knowledge I gained through my studies has equipped me with the expertise required to excel in academia, diplomacy, and now finance. I am deeply grateful to INTO for providing me with an education that has been instrumental in shaping my career.”*

**INTO London Foundation**  
2013-2014

**Royal Holloway, University  
of London**

BSc (Hons) Politics and International  
Relations

**Geneva School of  
Diplomacy**

Master's in International Relations

**Diplomatic Intern**

at the Permanent Mission of  
Malaysia to the United Nations

**Chief Financial Officer**

at Laila Capital, Malaysia

**INTO**   
**LONDON**

Careers in the  
UK and overseas

# The Software Engineer



**Tohfah, South Africa**  
Class of 2016-2017

○ **INTO London Foundation**  
2016-2017

● **University of Leeds**

BSc (Hons) Computer Science with High-Performance  
Graphics and Games Engineering

● **University of Exeter**

MSc Data Science and Artificial Intelligence

● **Graduate Software Engineer**

at Couchbase, UK

Careers in the  
UK and overseas

# The Project Manager



○ INTO London Foundation  
2016-2017

● Manchester Metropolitan  
University

BSc (Hons) Psychology

● Università Cattolica del  
Sacra Cuore

Master's in International  
Marketing

● Junior Project Manager  
at Expandi, Milan

**Clara, Brazil**  
Class of 2016-2017

*"INTO London was a great help for me, in all aspects, personally and professionally. It has helped me to be more open to meet new people and cultures, helping my network increase. One of the things I remember the most was how my organisational skills were terrible before INTO, and with the help of my friends and professors I was able to improve not only this skill but many others."*

**INTO**   
LONDON



Careers in the  
UK and overseas

# The Systems Engineer



**Akshav, Mauritius**  
Class of 2017-2018

○ **INTO London Foundation**  
2017-2018

● **University of the West of  
England**

BEng (Hons) Aerospace Engineering  
with Pilot Studies

● **Cranfield University**

MSc Avionics Systems Design

● **Air Traffic Control Systems  
Engineer**

at Indra Sistemas

*“INTO London is much beyond just an institution. It is creating the pioneers of the future. INTO has moulded my personality and clarified my vision of the future. I am incredibly grateful to the institute for providing guidance and motivation to inspire me to achieve my goals. I am currently studying what I love and doing the job I wanted.”*

**INTO**   
**LONDON**

Careers in the  
UK and overseas

# The Recruiter



○ **INTO London Foundation**  
2017-2018

● **University of Leicester**  
BSc (Hons) Marketing  
*First class honours*

● **Project Coordinator  
(Student Employment)**  
at the University of Leicester

● **Recruitment Officer**  
at the University of East London

**Yunaisa, Bangladesh**  
Class of 2017-2018

*"I 100% recommend INTO London World Education Centre. The best thing about it here is the care and personal attention I have received during my one-year study."*

Careers in the  
UK and overseas

# The Influencer Manager



**Caroline, Indonesia**  
Class of 2017-2018

○ INTO London Foundation  
2017-2018

● Kingston University London  
BA (Hons) Graphic Design

● Graduate Intern

Kingston University Careers and  
Employability Service

● Influencer Manager

at UltraClout Media, London

*“INTO London has not only given me an amazing time where I got to meet my friends for life, it gave me an amazing learning opportunity where I was able to explore my interest of art guided by the dedicated tutors. If I could turn back time to my foundation year experience, I would definitely in a heartbeat!”*



Careers in the  
UK and overseas

# The Marketer



○ **INTO London Foundation**  
2017-2018

● **Queen Mary, University of  
London**

BSc (Hons) Business Management  
*First class honours*

● **Imperial College London**

MSc Economics and Strategy for  
Business

● **Head of Marketing**

at Leading Your International  
School, Malaysia

**Jane, Malaysia**  
Class of 2017-2018

*“INTO London provided thorough support for my university application, and the programme prepared me with the fundamentals to progress to university.”*

**INTO**   
LONDON

Careers in the  
UK and overseas

# The HR Advisor



**Fatou, Guinea**  
Class of 2020-2021

*"I was really impressed by the support at INTO. The team are here any time you need them and it encouraged me to stick to the programme."*

○ INTO London Pre-master's  
2020-2021

● **University of West London**  
MSc Applied Project Management  
*Distinction*

● **HR Advisor**  
at Expatservices, Guinea