

INTO »

 **Newcastle**
University

UNIVERSITY PATHWAYS

for international students | 2022–23

**RUSSELL
GROUP**

For making an impact

GLOBAL TOP
150
UNIVERSITY
(QS World University Rankings 2022)

RANKED
16th
in the UK for **global research power** (REF 2014)

GLOBALLY CONNECTED
with almost a quarter of a million worldwide alumni

For your future career

STRONG EMPLOYER LINKS
with multinational businesses, including Siemens, PwC, FDM, Enterprise and IBM

Top **20**
most targeted University
in the UK by The Times Top 100 Graduate Employers 2020–21

AWARDED
5
QS Stars for **Student Employability** 2021

For a welcoming community

Top **10**
for affordability in the UK
(QS Best Student Cities 2022)

TOP
20
IN THE WORLD
for Sustainable Cities and Communities
(Times Higher Education Impact Rankings 2021)

28K STUDENTS
140 COUNTRIES

For top subjects

IN THE UK



2nd

Agriculture and Forestry

(The Complete University Guide 2022)



9th

Communication and Media Studies

(The Complete University Guide 2022)



10th

Architecture

(The Complete University Guide 2022)



10th

Sports Science

(The Complete University Guide 2022)

IN THE WORLD



Top 150

Psychology

(QS World University Rankings by Subject 2021)



Top 125

Law

(Times Higher Education World Rankings by Subject 2021)



Top 100

Life Sciences

(QS World University Rankings by Subject 2021)



Top 150

Civil and Structural Engineering

(QS World University Rankings by Subject 2021)



AN EDUCATION FOR LIFE

Welcome to INTO Newcastle University, your pathway to a degree from Newcastle University – an institution with a legacy of academic excellence with real global impact. We give international students like you the opportunity to study at a university consistently ranked among the best in the UK.

At INTO Newcastle, you'll study a specialist programme designed exclusively for international students and specially tailored to the requirements of the University. We'll help you improve your English language skills and adjust to life as a student in the UK, so you can confidently progress to your degree at Newcastle University.

You'll complete your course at our modern Study Centre on the University's beautiful city centre campus. And with access to modern facilities in the Centre and on campus, you'll feel like part of the University from day one.

Choosing to study abroad is a big decision, but at INTO Newcastle University we'll give you everything you need to succeed at university and beyond. Just take a look at our student success rates in 2018–19.

CHOOSE #INTONEWCASTLE AND OPEN UP A LIFETIME OF OPPORTUNITIES.

98% PASSED

88% of which were **ELIGIBLE** to progress

Passed: % of those who completed their pathway
Eligible: % eligible to progress to Newcastle University of those who passed



WHY CHOOSE US?

Driving innovation

Over its 180-year history, Newcastle has established itself as an internationally recognised university with many impressive accolades to its name, including Top 150 global university (QS World University Rankings 2022).

You can choose from over 200 undergraduate and 300 postgraduate taught and research degrees in a wide variety of subjects. From Accounting, Architecture and Biomedical Sciences to Engineering, Pharmacy and Law: it's easy to find your perfect programme.

Educating future generations

Newcastle's teaching is inspired by its internationally-excellent research, meaning you'll learn the latest theories and techniques from leading experts in their field.

At Newcastle you'll receive a high level of teaching, designed to challenge you and help reach your potential. Your teachers will inspire you to think differently and challenge ideas.

Get career-ready

With high-quality degrees, a focus on developing employability skills and a strong reputation with employers, Newcastle University will equip you with the skills needed to become a highly employable graduate.

Many of the University's degrees are also accredited by, and developed with, professional organisations, preparing you for the world of work and further study.

You'll benefit from the University's award-winning careers support and gain valuable experience and skills by taking part in the NCL+ initiative, which includes extracurricular activities and placements. And when you graduate, you'll join a network of successful graduates who are accomplishing great things!

Global influence

With campuses in Newcastle, Singapore and Malaysia, and a community of 28,000 students from 140 different countries, Newcastle is a truly global university.

When you finish your studies, you'll join an international network of nearly a quarter of a million alumni in more than 200 countries, so you'll never be far from a fellow Newcastle graduate!

Making an impact

As a research-intensive University, it will come as no surprise that Newcastle is rated 16th in the UK for 'research power' (Research Excellence Framework 2014).

From pioneering medical and scientific breakthroughs, to investigating global issues in health, the environment and society, the University's research helps to transform people's lives around the world and truly make an impact on society.

'We are committed to diversity and are proud of our international outlook, with a student community that includes students from throughout the UK and 150 countries worldwide.'

Professor Chris Day
Vice-Chancellor, Newcastle University

TOP 25

IN EUROPE FOR TEACHING
EXCELLENCE

(Times Higher Education Europe
Teaching Rankings 2019)

22

SUBJECTS IN THE
TOP 20 IN THE UK

(The Times and The Sunday Times
Good University Guide 2021)



CAMPUS LIFE

'Almost all of the university's facilities are open to us. I was beyond enthusiastic as we could familiarise ourselves with what the university had to offer and explore the campus just like the university students.'

Anjie, Indonesia
BA Communication and Media Studies, Newcastle University

Your Study Centre

You'll complete your INTO course at our modern, safe Study Centre at the heart of the Newcastle University campus. From day one, you'll become part of the Newcastle University student community – with access to the same libraries, Students' Union and cafés as everyone else on campus. As well as contemporary classrooms and fantastic IT facilities, the Centre provides specialist facilities including:

- two modern science labs
- lecture theatres
- an architecture studio

Supporting you

Need advice? The Centre offers 24-hour security from the moment you arrive. From visa and immigration support to airport pick-up and an orientation programme in your first week, you'll have all the help you need to feel at home. Our Student Experience team can assist you with:

- settling in to your new home
- extra support if you're under 18
- opening a bank account
- a 24-hour emergency telephone number
- planning a trip
- answering an academic question

Discover great facilities at Newcastle

Once you progress to your degree at Newcastle University, there are even more incredible facilities to enjoy. The University's campus is built around you and, thanks to a number of recent multi-million pound investments, is constantly evolving. You'll have access to:

- four libraries run by the award-winning library service team
- a range of resources in over 150 languages in the popular Language Resource Centre
- IT facilities including 3,000+ computers, dedicated support staff
- access to exceptional sports facilities and activity programmes



**Award-winning
library service**



TOP SPECIALIST FACILITIES

Depending on your degree, you'll benefit from some exceptional facilities when you progress



Engineering equipment such as earthquake-resistant testing tables



Bookable meeting rooms, an event suite and Bloomberg terminals



24/7 Architecture studio with CAD facilities



Purpose-built Mooting Room and dedicated Law library



Virtual Reality Suite and Cyber Physical Lab

94%

overall student satisfaction

(INTO Annual Experience Survey 2021)

OUR CITY



YOUR HOME FROM HOME



'I'm really attached to this city. I adore it. There are so many places to go!'

Majd, Lebanon
BSc (Hons) Biomedical Sciences,
Newcastle University

Consistently voted one of the UK's favourite student cities, Newcastle has heaps of character, friendly locals and a thriving student community. Living costs are affordable and it's easy to explore on foot – so it's the perfect place to study! You can discover:

- some of the best shopping in the UK and a vibrant nightlife scene
- the beautiful Northumbrian coastline, which is just a bus or metro ride away
- live music, theatre and arts in Ouseburn – the city's exciting cultural quarter
- authentic global food, with a buzzing Chinatown district

No matter who you are or what you enjoy, you'll fall in love with Newcastle upon Tyne.

4th in the UK
for local life



(Whatuni Student Choice Awards 2020)



With a choice of options, including on-campus residences located right next to the INTO Centre, it's easy to find the perfect place to call home.

Live as part of a vibrant international student community in a modern, on-campus residence. There's a range of options available to suit your needs.

Our self-catered residences have a community feel, with comfortable shared communal spaces to enjoy with friends. Here, you can relax and focus on your studies knowing you're in a safe and secure environment.

Supporting you

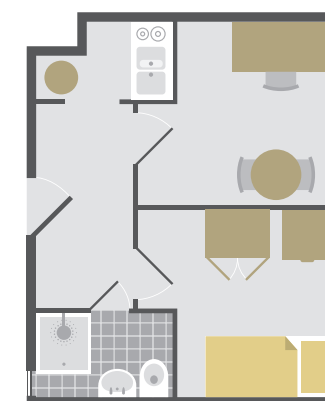
In our residences you'll find staff available 24/7 to offer support, and we'll also provide you with a 24-hour emergency telephone number.

If you're under 18, we offer extra support from on-site accommodation support staff.

Why choose INTO Newcastle accommodation?

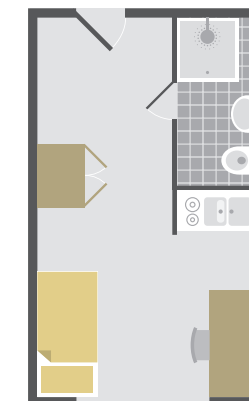
The self-catered student residences, **Joseph Cowen Halls** and **Bernicia Halls**, are perfectly situated in the heart of Newcastle. There are many other benefits, including:

- 1 MIN** 1 minute walk to the INTO Centre
- on-site maintenance and laundry facilities
- free WiFi
- 24/7 staff
- bedding, tableware and utensils
- social activities
- communal areas including games and movie rooms



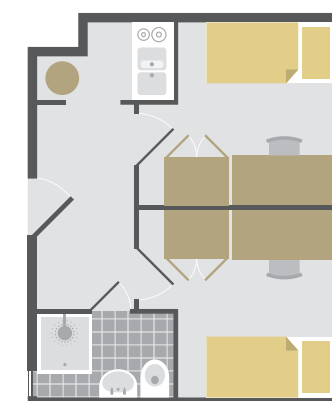
SINGLE EN SUITE PREMIUM STUDIO

- Private bathroom
- Private kitchen



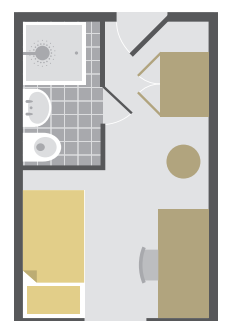
SINGLE BEDROOM STUDIO

- En suite bathroom
- Private kitchen



SHARED STUDIO

- Private bathroom
- Private kitchen



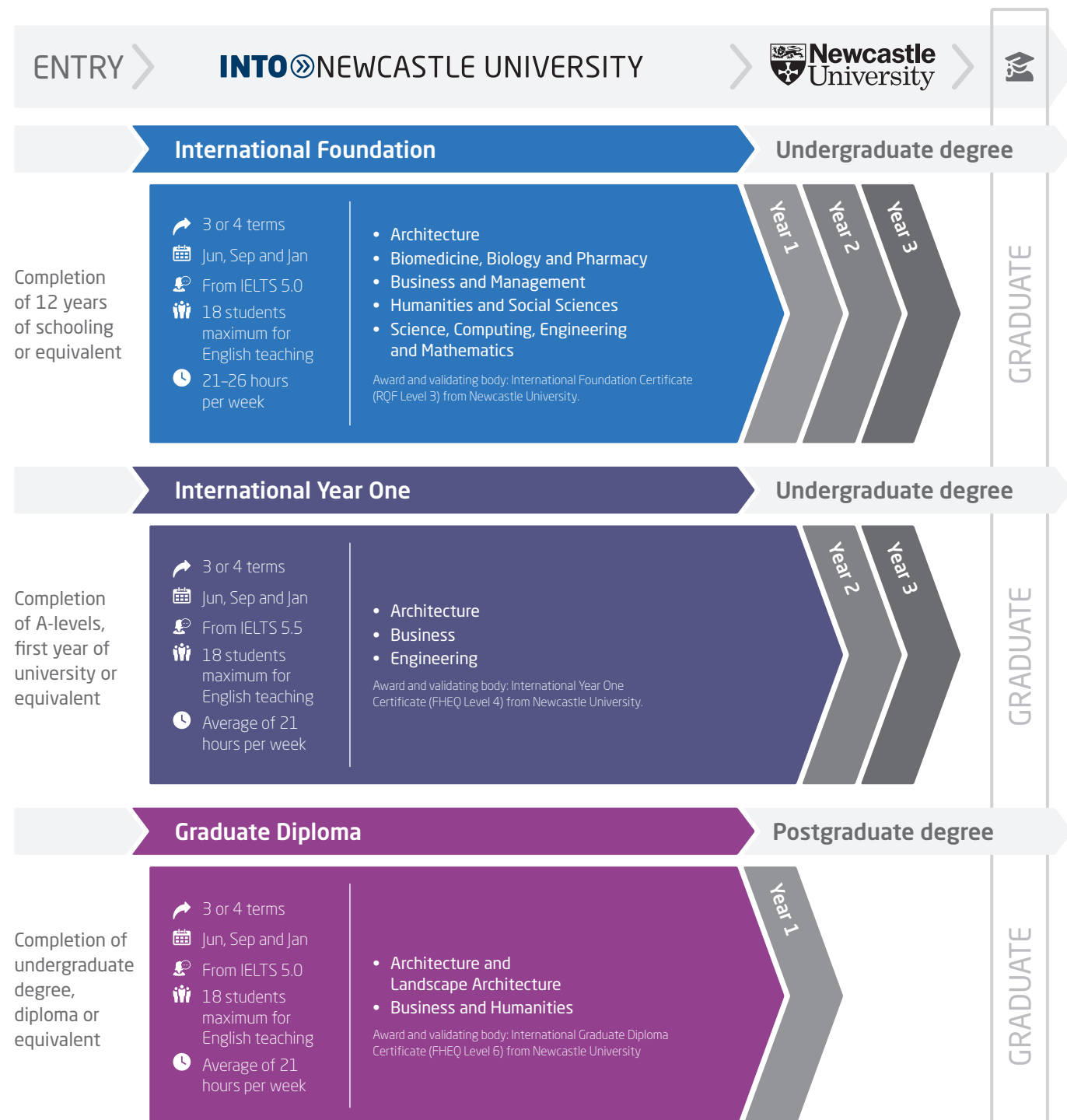
SINGLE STUDY BEDROOM

- En suite bathroom
- Shared kitchen

INTO Newcastle University aims to provide the accommodation requested. However, there may be occasions when INTO Newcastle University is unable to provide the requested accommodation and reserves the right to offer an alternative type of accommodation instead. The price for any alternative accommodation may differ and will be confirmed to students at the time of their offer.

Choosing your course

Prepare for your university degree with our tailored, academic pathway programmes designed in partnership with Newcastle University. You'll benefit from university-style teaching for subject-based modules and high academic standards. Then, when it comes to progressing to your chosen degree, we'll support you with your university application.



We also offer **English courses**. Go to page 18 for more information.

Please note that course length and start month options may vary depending on the pathway chosen. Please visit www.intostudy.com/newcastle/courses for full information.

International Foundation

Architecture - FA



Progress to 3 degrees. Scan the QR code to find out more.

- > Gain practical experience in the INTO Centre Architecture Studio.
- > Be inspired by field trips to Manchester, Edinburgh and Glasgow and study their historic buildings.

Modules

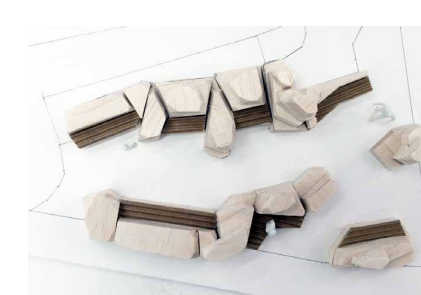
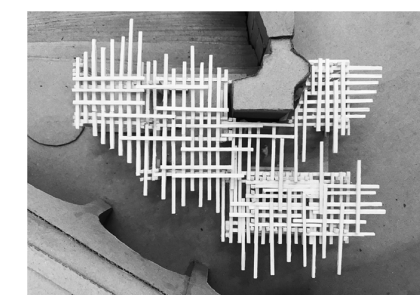
You will need to earn 120 credits from the following modules to successfully complete your pathway programme:

Architectural Communication (20 credits) Introduction to Architecture 1 (20 credits)
 Architecture, Culture and History (20 credits) Introduction to Architecture 2 (20 credits)
 English for Academic Purposes (40 credits)

For full details of portfolio guidelines, please visit: www.intostudy.com/ncl/architecture-portfolio-fdn

"Having never studied an Architecture course before joining INTO, I found it very easy to adapt to the INTO teaching environment. Their step-by-step progression tasks and personal tutorials made it significantly easier for me to improve – and led me to achieve the INTO Vice Chancellor scholarship at the end of the year."

Tony, Pakistan
 BA (Hons) Architecture, Newcastle University



Progress to Year 1 of an undergraduate degree at Newcastle University

Start date

3 term: Sep or Jan
 4 term: Sep or Jun

English language entry requirements*

3 term: IELTS 5.5 (with a minimum of 4.5 in any subskill) or equivalent
 4 term: IELTS 5.0 (with a minimum of 4.5 in all subskills) or equivalent

Age requirement

16 years and above**

* If you do not meet the minimum English language requirements, you should apply for our Academic English course. See page 18 for more information.
 ** All students commencing courses on a published September start date must be 17 years old by 31 December of that calendar year. For all other start dates, students must be 17 years old on the published start date of the programme.

10th

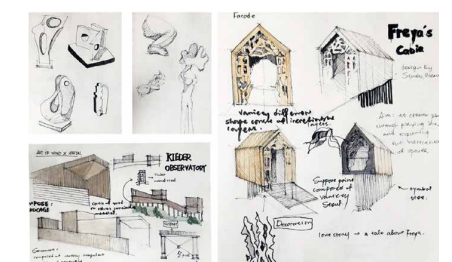
in the UK for Architecture

(The Complete University Guide 2022)

Building your portfolio

Throughout your Architecture pathway, you'll record and reflect upon your new knowledge through sketchbooks and process work – producing a final portfolio to demonstrate your skills. Some examples of students' work from their Architecture Yearbook:

Portfolio samples from: Dong-Pei, Jiwoo, Xixian, Xiaoqian, Nayeong.



Progress to Year 1 of an undergraduate degree at Newcastle University

Start date

3 term: Sep or Jan
4 term: Sep or Jun

English language entry requirements*

3 term: IELTS 5.5 (with a minimum of 4.5 in any subskill) or equivalent

4 term: IELTS 5.0 (with a minimum of 4.5 in all subskills) or equivalent

Students intending to progress to one of the degrees listed below must meet the following requirements:

3 term: IELTS 5.5 (with a minimum of 5.0 in all subskills) or equivalent

4 term: IELTS 5.0 (with a minimum of 4.5 in all subskills) or equivalent

Biochemistry, Biomedical Genetics, Biomedical Sciences. Medical Science (deferred choice), Pharmacology, Pharmacy, Physiological Sciences, Psychology and Biology, Psychology and Sport and Exercise Science, Psychology, Sport and Exercise Science

Age requirement

16 years and above**

Start date

3 term: Sep or Jan
4 term: Sep or Jun

English language entry requirements*

3 term: IELTS 5.5 (with a minimum of 4.5 in any subskill) or equivalent

4 term: IELTS 5.0 (with a minimum of 4.5 in all subskills) or equivalent

For students intending to progress to Newcastle Law School:

3 term: IELTS 6.0 (with a minimum of 5.5 in all subskills) or equivalent

4 term: IELTS 5.5 (with a minimum of 5.0 in all subskills) or equivalent

Age requirement

16 years and above**

* If you do not meet the minimum English language requirements, you should apply for our Academic English course. See page 18 for more information.

** All students commencing courses on a published September start date must be 17 years old by 31 December of that calendar year. For all other start dates, students must be 17 years old on the published start date of the programme.

International Foundation

Biomedicine, Biology and Pharmacy - FBP

Progress to **25+** degrees. **Scan the QR code** to find out more.



- Support your theoretical studies with hands-on experience at INTO's dedicated science laboratories.
- Receive a Samsung Galaxy tablet with access to digital textbooks and interactive studies.

Modules

You will need to earn 120 credits from the following modules to successfully complete your pathway programme:

Biology (20 or 40 credits)	Mathematics and Statistics (20 credits)
Chemistry (20 credits)	Physics (20 credits)
English for Academic Purposes (20 or 40 credits)	Study Skills and ICT (20 credits)

Prepare to progress to a degree at Newcastle University:



in the UK for Marketing

(The Complete University Guide 2022)



in the UK for Life Sciences and Medicine

(QS World University Rankings By Subject 2021)

Business and Management - FBM

Progress to **10+** degrees. **Scan the QR code** to find out more.



- Benefit from high-level support on your programme, progressing to independent study in preparation for your degree.
- Learn from experienced lecturers across a range of specialist subjects.

Modules

You will need to earn 120 credits from the following modules to successfully complete your pathway programme:

English for Academic Purposes (40 credits)	Mathematics for Business (20 credits)
Introduction to Accounting (10 credits)	Study Skills and Projects (30 credits)
Introduction to Business (20 credits)	

"The thing I enjoyed most about the International Foundation in Business and Management was the ability to use Newcastle University's facilities – for example, the Bloomberg terminals at Newcastle University Business School."

Ali, Iran
BSc (Hons) Economics and Finance,
Newcastle University



International Foundation

Humanities and Social Sciences - FHS

Progress to **15+** degrees. **Scan the QR code** to find out more.



- Experience learning outside the classroom with field trips, such as a visit to the theatre to see a Shakespeare play in action.
- Develop teamwork and communication skills with activities such as 'Dead Poet's Society' and 'Show Tunes'.

Modules

You will need to earn 120 credits from the following modules to successfully complete your pathway programme:

English for Academic Purposes (40 credits)	Introduction to the Study of Humanities and Social Sciences (20 credits)
Introduction to British Institutions and Culture (10 credits)	Study Skills and Projects (30 credits)
Introduction to Sociology (20 credits)	

Science, Computing, Engineering and Mathematics - FSC&M

Progress to **50+** degrees. **Scan the QR code** to find out more.



- Benefit from INTO's computer lab, with Raspberry Pi kits for budding computer programmers.
- Receive a Samsung Galaxy tablet with access to digital textbooks and interactive studies.

Modules

You will need to earn 120 credits from the following modules to successfully complete your pathway programme:

Chemistry (20 credits)	Personal and Professional Development (20 credits)
English for Academic Purposes (20 or 40 credits)	Physics (20 credits)
Mathematics for Physical Sciences and Engineering 1 (20 credits)	Principles of Computing (20 credits)
Mathematics for Physical Sciences and Engineering 2 (20 credits)	Study Skills and ICT (20 credits)

"We are able to experience and live on the campus just like the university students. Access to the library provides significant help with my research and gives me plenty of spaces to work in aside from my room."

Anjie, Indonesia
BA (Hons) Communication and Media Studies,
Newcastle University



Progress to Year 1 of an undergraduate degree at Newcastle University

Start date

3 term: Sep or Jan
4 term: Sep or Jun

English language entry requirements*

3 term: IELTS 5.5 (with a minimum of 4.5 in any subskill) or equivalent

4 term: IELTS 5.0 (with a minimum of 4.5 in all subskills) or equivalent

For students intending to progress to Newcastle Law School:

3 term: IELTS 6.0 (with a minimum of 5.5 in all subskills) or equivalent

4 term: IELTS 5.5 (with a minimum of 5.0 in all subskills) or equivalent

Age requirement

16 years and above**

Start date

3 term: Sep or Jan
4 term: Sep or Jun

English language entry requirements*

3 term: IELTS 5.5 (with a minimum of 4.5 in any subskill) or equivalent

4 term: IELTS 5.0 (with a minimum of 4.5 in all subskills) or equivalent

Age requirement

16 years and above**

* If you do not meet the minimum English language requirements, you should apply for our Academic English course. See page 18 for more information.

** All students commencing courses on a published September start date must be 17 years old by 31 December of that calendar year. For all other start dates, students must be 17 years old on the published start date of the programme.

Prepare to progress to a degree at Newcastle University:



in the UK for Communication and Media Studies

(The Complete University Guide 2022)












in the UK for Chemical Engineering

(The Complete University Guide 2022)

International Foundation Progression

There are more than 120 International Foundation progression degree options at Newcastle University. You can progress to any of these from one of our INTO pathway programmes. Below is a selection of some of the most popular. See pages 11–13 for more details on the pathways.

Degree	Specific requirements	English level	Final academic grade
International Foundation in Architecture (FA)			
Architecture BA (Hons)	Architecture 1 and Architecture 2 (60% average)	65	60%
Architecture and Urban Planning BA (Hons)		65	60%
International Foundation in Biomedicine, Biology and Pharmacy (FBP)			
Biochemistry BSc (Hons)	Mathematics and Statistics (55%), Chemistry (55%), Biology 1 (70%), Biology 2 (70%)	65 (with minimum 65 in all subskills)	65%
Biology (Cellular and Molecular Biology) BSc (Hons) 	Mathematics and Statistics (55%), Chemistry (55%), Biology 1 (70%), Biology 2 (70%)	65	65%
Biomedical Genetics BSc (Hons)	Mathematics and Statistics (55%), Chemistry (55%), Biology 1 (70%), Biology 2 (70%)	65 (with minimum 65 in all subskills)	65%
Biomedical Sciences BSc (Hons)	Mathematics and Statistics (55%), Chemistry (55%), Biology 1 (70%), Biology 2 (70%)	65 (with minimum 65 in all subskills)	65%
Environmental Science BSc (Hons) 	Mathematics and Statistics (55%)	65	60%
Nutrition with Food Marketing BSc (Hons) 	Mathematics and Statistics (55%), Chemistry (60%), Biology 1 (65%), Biology 2 (65%)	65	65%
Pharmacology BSc (Hons)	Mathematics and Statistics (55%), Chemistry (55%), Biology 1 (70%), Biology 2 (70%)	65 (with minimum 65 in all subskills)	65%
Pharmacy MPharm (Hons)	Mathematics and Statistics (55%), Chemistry (70%), Biology 1 (55%), Biology 2 (55%)	65 (with minimum 65 in all subskills)	65%
Physiological Sciences BSc (Hons)	Mathematics and Statistics (55%), Chemistry (55%), Biology 1 (70%), Biology 2 (70%)	65 (with minimum 65 in all subskills)	65%
Psychology BSc (Hons)	Mathematics and Statistics (60%), two other different Science subjects (60%)	65 (with minimum 65 in all subskills)	65%
International Foundation in Business and Management (FBM)			
Accounting and Finance BSc (Hons)	Mathematics for Business (65%)	65	70%
Business Management BA (Hons)	Mathematics for Business (60%)	65	65%
Economics BSc (Hons)	Mathematics for Business (65%)	65	70%
Economics and Business Management BA (Hons) 	Mathematics for Business (65%)	65	70%
Economics and Finance BSc (Hons)	Mathematics for Business (65%)	65	70%
Law LLB (Hons)	No module less than 55%	70	65%
Marketing BSc (Hons)	Mathematics for Business (60%)	65	65%
Marketing and Management BSc (Hons)	Mathematics for Business (60%)	65	65%
Politics and Economics BA (Hons)	Mathematics for Business (65%)	65	60%
International Foundation in Humanities and Social Sciences (FHS)			
Combined Honours BA (Hons)*		65	60%
Film and Media BA (Hons)		65	60%
International Relations BA (Hons)		65	60%
Law LLB (Hons)	No module less than 55%	70	65%
Media, Communication and Cultural Studies BA (Hons)		65	60%
Politics and International Relations BA (Hons)		65	60%
Sociology BA (Hons)		65	60%
International Foundation in Science, Computing, Engineering and Mathematics (FSCEM)			
Chemical Engineering BEng (Hons)	Mathematics for Physical Sciences and Engineering 1 (65%), Mathematics for Physical Sciences and Engineering 2 (65%), Chemistry (65%), Physics (65%)	60	65%
Civil and Structural Engineering BEng (Hons) 	Mathematics for Physical Sciences and Engineering 1 (65%), Mathematics for Physical Sciences and Engineering 2 (65%), Physics (65%)	60	65%
Civil Engineering BEng (Hons) 	Mathematics for Physical Sciences and Engineering 1 (65%), Mathematics for Physical Sciences and Engineering 2 (65%), Physics (65%)	60	65%
Computer Science BSc (Hons) 	Mathematics for Physical Sciences and Engineering 1 and 2 (50%)	60	60%
Computer Science (Game Engineering) BSc (Hons) 	Mathematics for Physical Sciences and Engineering 1 and 2 (50%)	60	60%
Computer Science (Software Engineering) BSc (Hons) 	Mathematics for Physical Sciences and Engineering 1 and 2 (50%)	60	60%
Electrical and Electronic Engineering BEng (Hons)	Mathematics for Physical Sciences and Engineering 1 (60%), Mathematics for Physical Sciences and Engineering 2 (60%), Physics (60%)	60	60%
Marine Technology with Marine Engineering BEng (Hons)	Mathematics for Physical Sciences and Engineering 1 (60%), Mathematics for Physical Sciences and Engineering 2 (60%), Physics (60%)	60	60%
Mathematics and Accounting BSc (Hons)	Mathematics for Physical Sciences and Engineering 1 and 2 (65%)	65	60%
Mathematics and Statistics BSc (Hons)	Mathematics for Physical Sciences and Engineering 1 and 2 (65%)	60	60%
Mechanical Engineering BEng (Hons)	Mathematics for Physical Sciences and Engineering 1 (65%), Mathematics for Physical Sciences and Engineering 2 (65%), Physics (65%)	60	65%

 Degree option with a year in industry also available.

* The Combined Honours degree offers a diverse range of subjects including: Archaeology, Business, Classics, Education, English Linguistic Studies, Film Studies/Film Practice, Geography, German, History of Art, Japanese, Music, Philosophy, Portuguese, Psychology, Spanish and Latin American Studies.

Find comprehensive information on all academic pathway programmes, degree options and progression requirements at: www.intostudy.com/newcastle/courses

International Year One

Architecture - IYOA

Progress to **2** degrees. **Scan the QR code** to find out more.



> Learn through an open design-studio culture, with an emphasis on the development of manual creativity and design skills.

Modules

You will need to earn 120 credits from the following modules to successfully complete your pathway programme:

Architectural Communication (20 credits)	Architecture History and Theory (20 credits)
Architectural Design 1 (20 credits)	Architecture Technology (20 credits)
Architectural Design 2 (20 credits)	English for Academic Purposes (20 credits)

For full details of Architecture portfolio guidelines, please visit: www.intostudy.com/ncl/architecture-portfolio-intl-dip

Business - IYOB

Progress to **3** degrees. **Scan the QR code** to find out more.



> Learn how to apply your knowledge through projects, including researching, planning and writing a strategic marketing plan for a new product idea.

Modules

You will need to earn 120 credits from the following modules to successfully complete your pathway programme:

Academic and Professional Development (20 credits)	Management and Organisation (20 credits)
English for Academic Purposes (20 credits)	Marketing (20 credits)
Introduction to Economics (20 credits)	Quantitative Methods (20 credits)

Engineering - IYOE

Progress to **3** degrees. **Scan the QR code** to find out more.



> Develop your knowledge across a range of fields including Electrical, Mechanical and Civil Engineering, in preparation for a specialist degree.





Modules

You will need to earn 140 credits from the following modules to successfully complete your pathway programme:

English for Academic Purposes (20 credits)	Electronics and Sensors (10 credits)
Engineering Mathematics (20 credits)	Thermofluid Mechanics (15 credits)
Sustainable Design, Creativity and Professionalism (30 credits)	Engineering Materials (15 credits)
Electrical and Magnetic Systems (15 credits)	Mechanics (15 credits)

International Year One Progression

There are 12 International Year One progression degree options at Newcastle University. You can progress to any of these from one of our INTO pathway programmes. Below is a selection of some of the most popular.

Degree	Pathway(s)	Specific requirements	English level	Final academic grade
Architecture BA (Hons)	IYOA	Architecture 1 and 2 60% average, with no less than 50% in each module	65	60%
Architecture and Urban Planning BA (Hons)	IYOA	No less than 50% in each module	65	60%
Business Management BA (Hons) 	IYOB	55% average with no less than 40% in each module	65	55%
Engineering MEng (Hons)* 	IYOE	40% average with no less than 40% in each module	65	40%
Marketing BSc (Hons) 	IYOB	55% average with no less than 40% in each module	65	55%
Marketing and Management BSc (Hons) 	IYOB	55% average with no less than 40% in each module	65	55%

 Degree option with a year in industry also available.

* Choose to specialise in Civil, Electronic and Electrical or Mechanical Engineering.

Progress to Year 2 of an undergraduate degree at Newcastle University

Start date

3 term: Sep or Jan
4 term: Jun or Sep

English language entry requirements*

3 term: IELTS 6.0 (with a minimum of 5.5 in writing) or equivalent
4 term: IELTS 5.5 (with a minimum of 5.0 in all subskills) or equivalent

Age requirement

16 years and above**

Prepare to progress to a degree at Newcastle University:

 10th

in the UK for Architecture

(The Complete University Guide 2022)

 Top 150

in the world for Business and Economics

(Times Higher Education World University Rankings by Subject 2021)

Start date

3 term: Sep

English language entry requirements*

3 term: IELTS 5.5 (with a minimum of 5.5 in writing) or equivalent

Age requirement

16 years and above**

* If you do not meet the minimum English language requirements, you should apply for our Academic English course. See page 18 for more information.

** All students commencing courses on a published September start date must be 17 years old by 31 December of that calendar year. For all other start dates, students must be 17 years old on the published start date of the programme.

Progress to a postgraduate degree at Newcastle University

Start date

3 term: Sep or Jan
4 term: Jun or Sep

English language entry requirements*

3 term: IELTS 5.5 (with a minimum of 5.5 in all subskills) or equivalent

4 term: IELTS 5.0 (with a minimum of 5.0 in all subskills) or equivalent

Age requirement

17 years and above

* If you do not meet the minimum English language requirements, you should apply for our Academic English course. See page 18 for more information.

Prepare to progress to a degree at Newcastle University:

Top 100

in the world for Architecture and Built Environment

(QS World University Rankings by Subject 2021)

Top 150

in the world for Arts and Humanities

(Times Higher Education World University Rankings by Subject 2021)

9th

in the UK for Communication and Media Studies

(The Complete University Guide 2022)

Graduate Diploma

Architecture and Landscape Architecture - GDA



Progress to **13** degrees. **Scan the QR code** to find out more.

- › Progress to a range of postgraduate degrees that develop critical thinking around your own interests.
- › Attend degree shows, public lectures and research workshops at the School of Architecture, Planning and Landscape.

What will I study?

You will need to earn 120 credits from the following modules to successfully complete your pathway programme:

Architecture, Culture and History (20 credits)	Design in Urban Context (20 credits)
Contextualised Design for Built Environment (20 credits)	English for Academic Purposes (40 credits)
	Professional Studies for Architecture (20 credits)

Business and Humanities - GDBH



Progress to **50+** degrees. **Scan the QR code** to find out more.

- › Progress to an internationally-focused postgraduate degree in Business, Finance, Journalism and more.
- › Develop your independent study skills in Semester 2, when you'll have fewer formal classes and more one-to-one support from tutors.

What will I study?

You will need to earn 120 credits from the following modules to successfully complete your pathway programme:

Business and Management (20 credits)	International Relations (10 credits)
Economics (20 credits)	Introduction to Humanities (20 credits)
English for Academic Purposes (40 credits)	Study Skills and Research (30 credits)
Financial Analysis (10 credits)	Social and Cultural Studies (20 credits)

"What I love about the course is that there are connections between the different modules. We are also given plenty of group projects, which help us learn to communicate better with each other."

Maggie, China
MSc (Hons) International Business Management,
Newcastle University



Graduate Diploma Progression

There are more than 60 Graduate Diploma progression degree options at Newcastle University. You can progress to any of these from one of our INTO pathway programmes. Below is a selection of some of the most popular. See page 16 for more details on the pathways.

Degree	Specific requirements	English level	Final academic grade
Graduate Diploma in Architecture and Landscape Architecture (GDA)			
Advanced Architectural Design: Architecture and Cities MSc	Architecture 1 and 2 (60%)	65 (with minimum 60 in all subskills)	55%
Advanced Architectural Design: Property Development MSc	Architecture 1 and 2 (60%)	65 (with minimum 60 in all subskills)	55%
Architecture MArch	70% minimum in Architecture 1 and 2. Progression is also dependent on successful interview. Honours degree or international equivalent in Architecture is preferred.	65 (with minimum 60 in all subskills)	60%
Landscape Architecture Studies MA	Architecture 1 and 2 (60%)	65 (with minimum 60 in all subskills)	55%
Urban Design MA	Architecture 1 and 2 (60%)	65 (with minimum 60 in all subskills)	55%
Graduate Diploma in Business and Humanities (GDBH)			
Accounting, Finance and Strategic Investment MSc		65 (with minimum 60 in all subskills)	60%
Art Museum and Gallery Studies MA		65 (with minimum 60 in writing and speaking)	60%
Creative Arts Practice MA		65 (with minimum 60 in writing and speaking)	60%
Cross-Cultural Communication MA		65 (with minimum 60 in writing)	60%
Cross-Cultural Communication and Applied Linguistics MA		65 (with minimum 60 in writing)	60%
Cross-Cultural Communication and Education MA		65 (with minimum 60 in writing)	60%
Cross-Cultural Communication and International Marketing MA		65 (with minimum 60 in writing)	60%
Cross-Cultural Communication and International Relations MA		65 (with minimum 60 in writing)	60%
Cross-Cultural Communication and Media Studies MA		65 (with minimum 60 in writing)	60%
Digital Business (e-Marketing) MSc		65 (with minimum 60 in all subskills)	60%
E-Business (Information Systems) MSc		65 (with minimum 60 in all subskills)	60%
Education: International Perspectives MA		65 (with minimum 60 in writing)	60%
European Union Studies MA		65	60%
Global Human Resource Management MSc		65 (with minimum 60 in all subskills)	60%
Heritage Studies MA		65 (with minimum 60 in writing and speaking)	60%
Human Geography Research MA		65	60%
International Business Management MSc		65 (with minimum 60 in all subskills)	60%
International Commercial Law LLM	No module less than 55%	65 (with minimum 60 in writing)	65%
International Financial Analysis MSc		65 (with minimum 60 in all subskills)	60%
International Law and Global Challenges LLM	No module less than 55%	65 (with minimum 60 in writing)	65%
International Marketing MSc		65 (with minimum 60 in all subskills)	60%
International Multimedia Journalism MA		65 (with minimum 60 in writing and speaking)	60%
International Political Economy MA		65	60%
International Politics (Critical Geopolitics) MA		65	60%
International Politics (Global Justice and Ethics) MA		65	60%
International Politics (Globalisation, Poverty and Development) MA		65	60%
International Relations MA		65	60%
Law LLM	No module less than 55%	65 (with minimum 60 in writing)	65%
Media and Journalism MA		65 (with minimum 60 in writing and speaking)	60%
Media and Public Relations MA		65 (with minimum 65 in writing and 60 in speaking)	60%
Museum Studies MA		65 (with minimum 60 in writing and speaking)	60%
Politics (Research) MA		65	60%
Regional Development and Spatial Planning MA		65 (with minimum 60 in all subskills)	60%
Sociology MA		65	60%
Transport Planning and Engineering MSc	Progressing students are required to pass a university health and safety test	65 (with minimum 60 in all subskills)	60%
Urban Planning MSc		65 (with minimum 60 in all subskills)	60%
World Politics and Popular Culture MA		65	60%

Improve your English language skills to prepare for further academic study

Start date

16 weeks: July
1-4 terms: Jun, Sep, Jan, Apr

English language entry requirements

From IELTS 3.0 or equivalent

Age requirement

16 years and above

Class size and hours

Maximum of 18 students

30 learning hours per week, with
25 hours of face-to-face contact

English courses

Study English at Newcastle University to improve your English level fast with tailored, personalised support and for the smoothest transition to further UK academic studies.

EN Academic English

This course is for you if:

- > You want to study an English course that is more than language learning – you'll develop the academic skills needed to successfully study in the UK.
- > You want to benefit from studying in an English-speaking environment where you can easily practice your language skills and immerse yourself in the culture.

How will Academic English benefit me?

- Focus on reading, writing, speaking and listening in a context that reflects the skills you must have in order to succeed at university.
- Gain the academic study skills you need to succeed in further UK education.
- Extended International Foundation, International Year One and Graduate Diploma courses available with a term of Academic English in one programme.

"I think the quality of teaching is astonishing, because it is very engaging. They are genuinely interested in your opinion on everything. I would strongly recommend INTO Newcastle University."

Rubinho, Brazil
Academic English, INTO Newcastle University



Improve your English language level before starting your degree

Start date

June or July

English language entry requirements

From: IELTS 5.5 or equivalent

Age requirement

17 years and above

Class size and hours

Maximum of 18 students

20-21 hours per week on average

EN Pre-sessional English

This course is for you if:

- > You are academically qualified and hold an offer from Newcastle University.
- > You need to improve your English language skills to the level required for your degree.

How will Pre-sessional English benefit me?

- Improve your core English skills in listening, speaking, reading and writing.
- Adjust to living and studying in the UK and to the style, challenges and expectations of the UK higher education system.
- On completion of the Pre-sessional English course, you will be able to successfully progress to your chosen degree at Newcastle University.

SUCCESSFUL INTO ALUMNI



“ Graduating feels amazing! I’ve already got a job in the software department of Deloitte in Belfast, where I will be working on their technology solutions. I am going to miss the university campus and the city. Thank you to everyone for the encouragement and support!

Alua, Kazakhstan

Software Developer at Deloitte Digital
BSc (Hons) Computer Science, Newcastle University



“ Studying at INTO and Newcastle University has been one of the highlights in my life. The scholarship given by both of these institutions allowed me to study abroad, expand my horizons and learn different viewpoints.

Kezia, Indonesia

Chief of Acceleration at Skilvul
BA (Hons) Psychology and Media and Communications, Newcastle University

“ I learnt so much on the International Year One in Architecture at INTO. The class size was small, so they knew us by name and could help us to progress better.

Kenny, Hong Kong

Part 1 Architectural Assistant at Cousins & Cousins Architects in London
BA (Hons) Architecture, Newcastle University



Dates and prices


The cost of your programme may vary depending on factors including the pathway chosen and programme length. The following guide to costs is based on pricing for the current academic year and provides an indication of the cost of attendance for some of our pathways. For specific cost information, please refer online: www.intostudy.com/newcastle/courses

Estimated cost of attendance based on prices for current academic year 2021-2022						
Study length	Tuition	Accommodation	Books and fees	Airport pick up**	Insurance	Total
Academic programmes						
International Foundation (3 term)	£20,395-£21,395	£5,775-£9,538	£390-£790	£35	£357	£26,917-£32,080
International Foundation (4 term)	£24,645-£25,695	£8,415-£12,801	£450-£850	£35	£466	£33,976-£39,812
International Year One (3 term)	£20,395-£21,395	£5,775-£9,538	£390-£790	£35	£357	£26,917-£32,080
International Year One (4 term)	£24,645-£25,695	£8,415-£12,801	£450-£850	£35	£466	£33,976-£39,812
Graduate Diploma (3 term)	£20,395-£21,395	£5,775-£9,538	£390-£790	£35	£357	£26,917-£32,080
Graduate Diploma (4 term)	£24,645-£25,695	£8,415-£12,801	£450-£850	£35	£466	£33,976-£39,812
English language courses						
1 term*	£4,895	£1,720-£2,761	£95	£35	£122	£6,832-£7,873
16 weeks	£7,850	£3,205-£4,687	£150	£35	£145	£11,350-£12,832

Start months and term dates					
Academic programmes		Academic English		Pre-sessional English	
June (4 term)	Thu 30 Jun 2022-Fri 16 Jun 2023	July (16 weeks)	Thu 28 Jul 2022-Fri 09 Dec 2022	June (10 weeks)	Thu 30 Jun 2022-Fri 09 Sep 2022
September (3 term)	Mon 26 Sep 2022-Fri 16 Jun 2023	September (1 term)	Mon 26 Sep 2022-Fri 09 Dec 2022	July (6 weeks)	Thu 28 Jul 2022-Fri 09 Sep 2022
September (4 term)	Mon 26 Sep 2022-Fri 08 Sep 2023	January (1 term)	Mon 09 Jan 2023-Fri 24 Mar 2023		
January (3 term)	Mon 09 Jan 2023-Fri 08 Sep 2023	April (1 term)	Wed 05 Apr 2023-Fri 16 Jun 2023		
		June (1 term)	Thu 29 Jun 2023-Fri 08 Sep 2023		


Please note the dates and prices shown are for the current academic year of 01 September 2021 - 31 August 2022 and are for indicative purposes only. All students who confirm their offer on or before 31 January 2022 will pay the 2021/2022 price as per their existing offer letter. After 31 January 2022, where tuition fees have increased or dates changed, students will receive a new offer letter detailing the new 2022/2023 pricing and dates. For full details of term dates, please visit the relevant course page at www.intostudy.com/newcastle/courses

* The price will depend on your start date and length of study. Prices shown are only for one term.
Vacation weeks in between terms are extra and will be charged at the weekly accommodation price.
** Please note airport pickup is optional and is not included in the total.




Apply via your local INTO educational counsellor

If you would like us to put you in contact with one of our counsellors, please contact us.



Apply online

Complete our online application form: apply.intostudy.com



Need some help with your tuition fees?

Check to see if you're eligible for a scholarship: www.intostudy.com/newcastle/scholarships

Connect with us



Discover more online

For students:
www.intostudy.com/newcastle
For education counsellors:
partnerportal.intoglobal.com/newcastle

Contact us

Enquiries and applications:
ukes@intoglobal.com
or +44 1273 876040
Visit the Centre:
into.marketing@newcastle.ac.uk
or +44 191 208 7535

Centre address details:
INTO Newcastle University
The INTO Building
Newcastle University
Newcastle upon Tyne
NE1 7RU
United Kingdom



Through innovative partnerships with leading universities, we expand opportunities for higher education, ensuring success and transforming the lives of our students and staff.

INTO GIVING

Working across the globe, INTO Giving supports projects that increase access to education and improve the quality of teaching and learning. For more information visit www.into-giving.com

Education counsellor's stamp

