

INTO»

UNIVERSITY of
STIRLING



BE STIRLING

University pathways
for international students
2022–23

BE THE DIFFERENCE



Top 20 in the UK
for student satisfaction
National Student Survey 2021



Top 30 University
in the UK
Guardian University Guide 2021



Welcome to INTO University of Stirling – your pathway to a degree from the University of Stirling or another leading Scottish university. We give international students like you the opportunity to study in the world's most beautiful country*, with more world-class universities per head of the population than anywhere else in the world.

Top 5

in the UK for
Communication
and Media Studies**

Top 10

in the UK for
Marketing†

* Rough Guides 2019

** The Times and The Sunday Times Good University Guide 2021

† The Complete University Guide 2022

Top 5

in the UK for
Criminology**

Top 15

in the UK for
Accounting
and Finance**

Top 10

in the UK for
Education**

Top 15

in the UK for
Business Studies**

At INTO University of Stirling, you will study a programme designed exclusively for international students and tailored to the requirements of the University. You'll study in our modern Study Centre on campus, where you'll become part of the University community from the day you arrive.

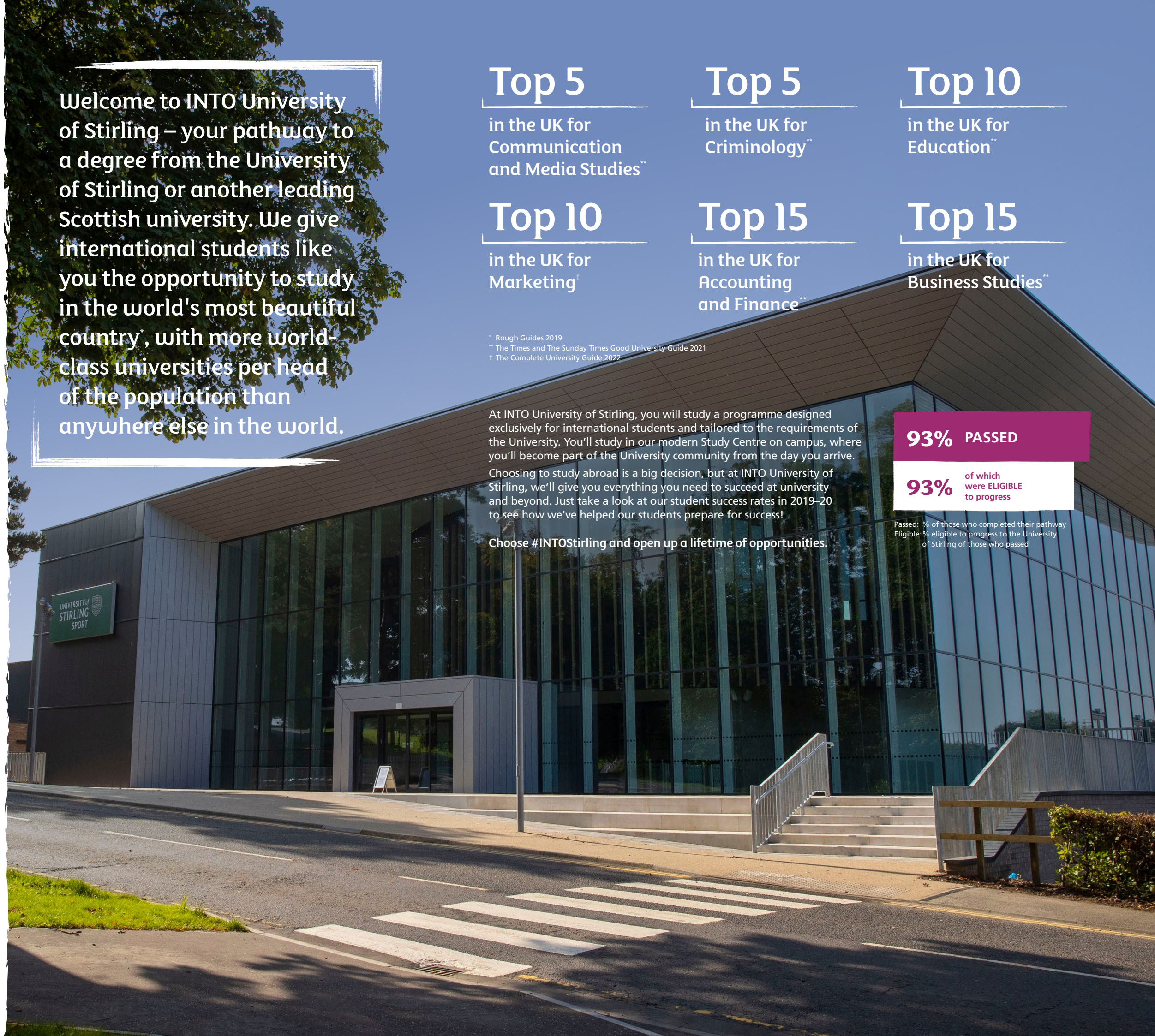
Choosing to study abroad is a big decision, but at INTO University of Stirling, we'll give you everything you need to succeed at university and beyond. Just take a look at our student success rates in 2019–20 to see how we've helped our students prepare for success!

Choose #INTOStirling and open up a lifetime of opportunities.

93% PASSED

93% of which
were **ELIGIBLE**
to progress

Passed: % of those who completed their pathway
Eligible: % eligible to progress to the University
of Stirling of those who passed





“With access to inspirational teachers and close industry links, our international students enjoy a life-changing experience that helps them to develop the practical skills and knowledge that are essential for future employment.”

Professor Sir Gerry McCormac
Principal and Vice-Chancellor



**Top 5 in the UK
Top 15 in the world
for careers services**

UK International Student Barometer Benchmark 2018
Global International Student Barometer Benchmark 2018



20%
of students are
from overseas



BE PREPARED

Dedicated to providing its students with lifelong employability skills, the University of Stirling won't just help you succeed academically – it will prepare you for your future career. With 20% of students from overseas, Stirling welcomes the world to its international campus, and you will have a home here too.

**1st in
the UK and
5th in world
for campus environment**

UK International Student
Barometer Benchmark 2018
Global International Student
Barometer Benchmark 2018

COMMITTED TO EMPLOYABILITY

The University of Stirling is committed to equipping its students with career management skills. With strong links to global and local organisations, the University has been awarded five-star excellence for employability*.

DEVELOPING YOUR FUTURE

Stirling graduates stand out. All degree programmes are designed to help you build the skills you will need to develop a clear career path and put you on track for future success, while leading academics will equip you with the specialist industry knowledge you'll need to make an impact in your chosen field.

* QS World University Rankings 2021

IDEAL LEARNING ENVIRONMENT

The University's beautiful 330-acre campus offers an unrivalled living and learning environment, with Stirling city centre close to campus. You'll have the ideal combination of a peaceful learning space and an energetic city atmosphere.

EXPLORE CENTRAL SCOTLAND

Stirling is the perfect location to make the most of what central Scotland has to offer. Glasgow and Edinburgh are in easy reach, with trains as quick as 30 minutes to Glasgow and 45 minutes to Edinburgh. Enjoy visiting two of Scotland's largest cities for weekend adventures, festivals, concerts and exceptional shopping opportunities.

WORLD-CLASS SPORTS FACILITIES

Crowned Scotland's University of Sporting Excellence in recognition of its world-class facilities and excellence across sports education and research, the University of Stirling has continuously produced a whole host of star athletes.

FLEXIBLE LEARNING OPTIONS

You have the freedom to choose your own path here. As an INTO University of Stirling student, you can choose to enter a degree at the University of Stirling once you successfully complete your pathway programme, or you can apply to another leading Scottish university. This means that you can customise your studies to your interests and passions.



BE PART OF OUR COMMUNITY

The University of Stirling's breathtaking 330-acre campus is centred around a large loch and is home to the magnificent 18th-century Airthrey Castle. All the facilities you need here are a short walk from each other, so you won't need to go far to buy groceries, visit a doctor, or socialise in a vibrant setting.

YOUR INTO STUDY CENTRE

The INTO Centre is located at the centre of campus, so you will become part of the University of Stirling community from the day you arrive. This state-of-the-art building is equipped with modern learning facilities and is where most of your classes will take place, with many social spaces around the building to unwind with friends and quiet places for independent study.

"This is a gorgeous campus surrounded by rolling hills and wildlife. Stirling's campus is one of the reasons why I found it so easy to settle in."

Bethany, Zimbabwe
BSc (Hons) Psychology,
University of Stirling



modern classrooms with interactive whiteboards



large lecture theatre seating 110 students for university-style classes



academic counselling rooms for one-to-one student support



INTO Café serving international food

The safest city in the UK

The Complete University Guide 2020



TRANSFORMING YOUR CAMPUS

The £41m Campus Development Project includes:

- state-of-the-art gym and sports facilities
- Co-op supermarket with integrated Post Office and Amazon Lockers
- enhanced retail and catering
- new transport hub
- even more study and social spaces
- student hub

HERE TO SUPPORT YOU

From the moment you arrive, our Student Services team will help you settle into life at Stirling. Services include:

- help with opening a bank account and registering with a doctor
- visa and immigration guidance
- extra support for students under the age of 18
- 24-hour telephone helpline for out-of-hours questions

When you progress to the University of Stirling, the support will continue at the friendly and welcoming Student Services Hub and the dedicated Careers and Employability Service.

UNIVERSITY FACILITIES

You will also have access to many of the University's facilities, such as:

- 24/7 Library Study Zone
- MacRobert Arts Centre – enjoy live music, comedy, drama and movies
- Sports Centre – a £20 million redevelopment has created a new state-of-the-art sporting environment. You will benefit from:
 - indoor cycling studio
 - fitness suite
 - 50m swimming pool
 - 400m athletics track
 - tennis and squash courts

STUDENT SOCIAL LIFE

You will take part in an orientation programme in your first week which will give you the chance to meet other students and settle into life in Stirling. In the top 20 for student satisfaction in the UK (National Student Survey 2020), social activities at the University include:

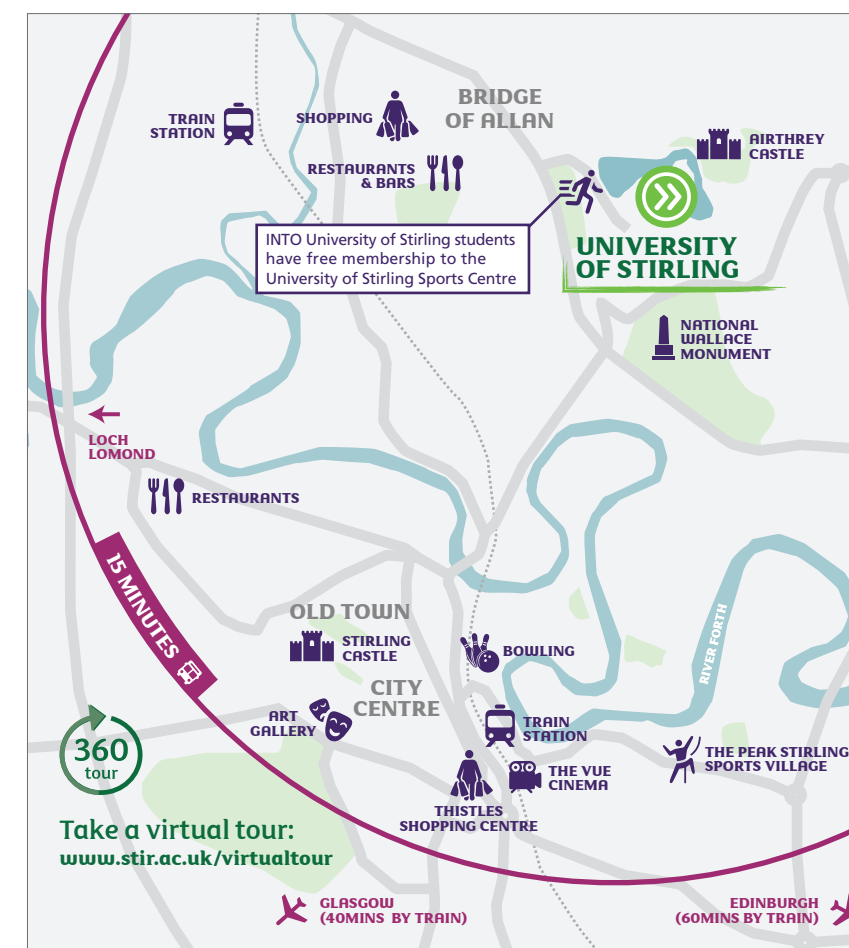
- day trips and events organised by the INTO Centre, with previous events including ghost walks, ceilidhs and international food days
- 120+ clubs and societies, from comics and gaming to sports clubs, faith societies and international societies
- sports halls and courts for hire to play basketball, squash and tennis with friends, or try a drop-in dance class
- enjoy a drink from the juice bar or a snack while watching live music at Venue, which transforms into an entertainment venue in the evening
- live sport broadcasting, open mic nights, quizzes and karaoke at Studio
- grab a booth at Underground to enjoy Starbucks coffee with friends

"Stirling's rankings in sports are high and the gym is the best quality in Scotland. That's why I decided to study here."

Taehwan, South Korea
MSc Psychology of Sport,
University of Stirling

3rd in the UK
for number of
hours socialising

Royal Bank of Scotland
Student Living Index 2019



BE ADVENTUROUS

Located in central Scotland, the vibrant and welcoming city of Stirling is the most affordable student city in the UK* and has a large student population. Its quick rail links to Glasgow and Edinburgh makes it the ideal location to go on an adventure.



A CITY YOU WON'T FORGET

Stirling is big enough to offer everything you'd expect from a modern city, while also offering a community feel.

Buses run regularly from the campus to the city centre and take just 10 minutes. As 20% of residents are aged between 16–29, there are plenty of fun social events to attend. You will also find:

- a great selection of coffee shops, bars and pubs to enjoy with friends
- Mediterranean, Italian, Asian and Indian restaurants in the city centre
- Asian supermarkets to buy specialty ingredients
- Loch Lomond and Trossachs National Park for outdoor adventures
- historic sites such as the Old Town where you'll find Stirling Castle
- entertainment options including a 10-pin bowling alley, a multiplex cinema and live music venues
- shopping centre with 80+ retailers
- a Jail Break Escape Room with fun and challenging puzzles and tasks

YOUR SCOTTISH ADVENTURE

If you want to explore the rest of Scotland, Stirling is only a short train ride away from both Glasgow and Edinburgh.

Glasgow is Scotland's biggest city:

- friendliest city in the world (Rough Guides 2021)
- 2nd busiest shopping street in the UK
- a festival city, home to the UK's 2nd largest music economy (unesco.org 2021)

Edinburgh is Scotland's capital city:

- UK's most popular city (YouGov 2021)
- home to the world's largest arts and comedy festival, the Edinburgh Fringe
- more restaurants per head than any other UK city (Scotland.org 2021)

"I visited most of Scotland, I would say. Just having that hub in Stirling allowed me to go anywhere."

Juan, Venezuela
BA (Hons) Politics and Economics,
University of Stirling



Top 10 most welcoming places in the UK

(Booking.com Traveller Review Awards 2021)



Top 5 cheapest household bills in the UK

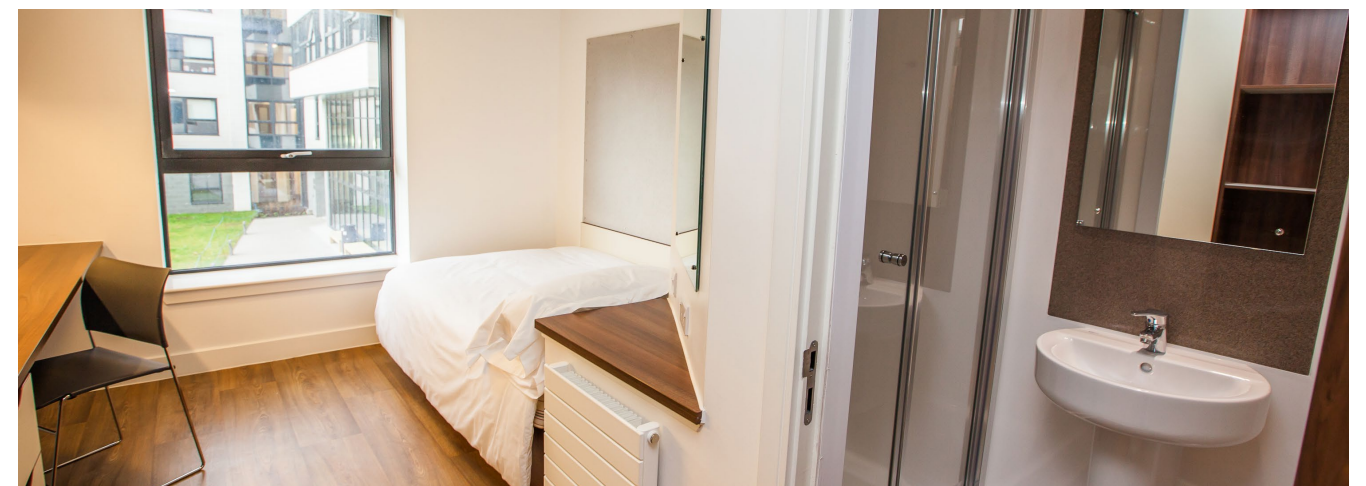
Royal Bank of Scotland Student Living Index 2019

BE AT HOME

INTO University of Stirling's safe student residences are on campus and close to the INTO Centre, meaning that you are just a five-minute walk away from your classes.

SUPPORTING YOU

In the residences, you will find staff available 24/7 to offer support. If you are under the age of 18, we offer extra support, such as regular welfare meetings, to ensure that your experience is a happy one.



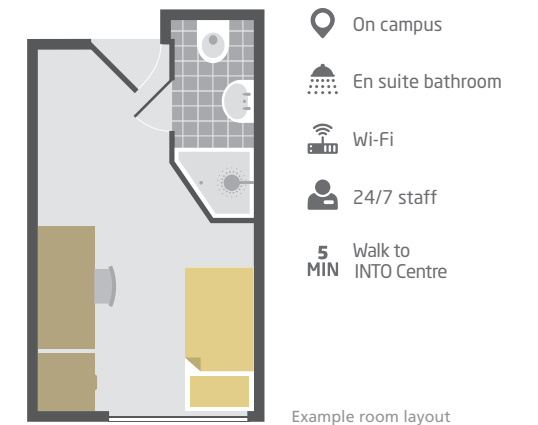
INTO University of Stirling aims to provide the accommodation requested. However, there may be occasions when INTO University of Stirling is unable to provide the requested accommodation and reserves the right to offer an alternative type of accommodation instead. The price for any alternative accommodation may differ and will be confirmed to students at the time of their offer.

"The community in Stirling is very international so it was quite easy to settle into life here. You settle in fast with the help of friends in your global community and you actually feel at home."

Stefanie, Malaysia
BA (Hons) Journalism Studies, University of Stirling

EN SUITE CAMPUS ACCOMMODATION

Located on campus, your en suite bedroom is part of a flat of up to nine other bedrooms. You will share a kitchen and living area with a sofa and TV – the perfect space to relax and socialise with your new friends. Laundry facilities are located just a two-minute walk away from your accommodation.



For full details of our other accommodation options, visit:
www.intostudy.com/stirling/accommodation

Choosing your course

Our combined academic preparation and degree programmes, designed in partnership with the University of Stirling, allow an easy transition between your preparatory studies and degree. Alternatively, you can prepare for a degree programme at a choice of Scottish universities with our tailored academic pathway programmes.



Please note that course length and start month options may vary depending on the pathway chosen. Please visit www.intostudy.com/stirling/courses for full information.



Undergraduate degree with International Year One - IY1

- Combine your preparation year with your undergraduate degree in one programme, requiring a single CAS for the duration of your studies. You won't have to worry about applying for multiple study visas!
- Develop your understanding of academic subjects related to your chosen degree programme as you improve your English language and study skills.
- Benefit from knowing that you'll continue directly to Year 2 of your undergraduate degree, provided you meet the academic requirements after the first year of your study plan.

Year 1 of study plan

You will need to earn 120 credits from your modules to complete the first year of your study plan:

Core modules:

Core Mathematics and Statistics (20 credits)
English Language for Academic Purposes (20 credits)
Study Skills for Business and Humanities or Science (20 credits)

Specialist modules:

You will also take compulsory specialist modules for your degree programme. These modules will depend on your area of study, but could include:
Biology; Chemistry; Principles of Computing; Physics; Introduction to: Business, International Politics, Law, Psychology or Sports Studies.

Undergraduate degree with International Year Two - IY2

- Combine your preparation year with your undergraduate degree in one programme, requiring a single CAS for the duration of your studies. You won't have to worry about applying for multiple study visas!
- Develop your understanding of academic subjects related to your chosen degree programme as you improve your English language and study skills.
- Benefit from knowing that you'll continue directly to Year 3 of your undergraduate degree, provided you meet the academic requirements after the first year of your study plan.

Year 1 of study plan

You will need to earn 120 credits from your modules to complete the first year of your study plan:

Core modules:

Study Skills (20 credits)
English for Undergraduate Study (20 credits)
Mathematics and Statistics (20 credits)

Specialist modules:

You will also take compulsory specialist modules for your degree programme. These modules will depend on your area of study, but could include:
Accounting and Finance; Economics; Human Resource Management; Introduction to Marketing; Political Concepts and Ideas.

Degree options:

There are a range of undergraduate degrees available at the University of Stirling. Here are some of the most popular:

Accounting BA (Hons) – IY1 or IY2
Biology BSc (Hons) – IY1
Business Studies BA (Hons) – IY1 or IY2
Computing Science BSc (Hons) – IY1
Data Science BSc (Hons) – IY1
Economics BA (Hons) – IY1
Film and Media BA (Hons) – IY1

Finance and Investment BA (Hons) – IY1 or IY2
Human Resource Management BA (Hons) – IY1 or IY2
Management BA (Hons) – IY1 or IY2
Marketing BA (Hons) – IY1 or IY2
Psychology BSc (Hons) – IY1
Software Engineering BSc (Hons) – IY1
Sports Studies BA (Hons) – IY1

Please note that course availability may change.

Combine preparation study with an undergraduate degree at the University of Stirling

Year 1 of study plan

Start date

4 years: Oct or Jan
4 years with Pre-sessional English: Jun

English language entry requirements*

4 years: IELTS 5.5 (with a minimum of 5.5 in each subskill) or equivalent.
4 years with Pre-sessional English: IELTS 5.0 (with a minimum of 5.0 in each subskill) or equivalent.

Age requirement

17 years and above**

* If you do not meet the minimum English language requirements, you may qualify for our International Foundation (page 14).
** All students commencing courses for the September start date must be 17 years old by 01 September of that calendar year.

Combine preparation study with an undergraduate degree at the University of Stirling

Year 1 of study plan

Start date

3 years: Oct or Jan
3 years with Pre-sessional English: Jun

English language entry requirements*

3 years: IELTS 5.5 (with a minimum of 5.5 in all subskills) or equivalent.
3 years with Pre-sessional English: IELTS 5.0 (with a minimum of 5.0 in each subskill) or equivalent.

Age requirement

17 years and above**

* If you do not meet the minimum English language requirements, you may qualify for our International Foundation (page 14).
** All students commencing courses for the September start date must be 17 years old by 01 September of that calendar year.

Combine preparation study with a postgraduate degree at the University of Stirling

Year 1 of study plan

Start date
2 years: Sep, Jan or Mar
2 years with Pre-sessional English: Jun

English language entry requirements*
2 years: IELTS 5.5 (with a minimum of 5.5 in each subskill) or equivalent.
2 years with Pre-sessional English: IELTS 5.0 (with a minimum of 5.0 in each subskill) or equivalent.

Age requirement
17 years and above**

* If you do not meet the minimum English language requirements, you may qualify for our Graduate Diploma (page 16).
** All students commencing courses for the September start date must be 17 years old by 01 September of that calendar year.

Postgraduate degree with Graduate Diploma – PGD

- › Combine your preparation year with your postgraduate degree in one programme, choosing from the University of Stirling's wide variety of degree programmes.
- › Study on a single CAS for the duration of your studies – you won't have to worry about applying for multiple study visas!
- › Benefit from knowing that you'll continue directly to your postgraduate degree, provided you meet the academic requirements after the first year of your study plan.

Year 1 of study plan

You will need to earn 120 credits from the following module options to successfully complete Year 1 of your study programme:

Core modules:
Academic English and Communication for Graduate Study (20 credits)
Critical Thinking (20 credits)
Quantitative or Qualitative Research Methods (20 credits)
Research Design (20 credits)
Study Skills for Graduate Study (20 credits)

Specialist modules:
Subject-specific module tailored to your chosen degree subject, available in Biology, Computing, Media, Sociology and TESOL (20 credits)

Degree options:

There are a range of postgraduate degrees available at the University of Stirling. Here are some of the most popular that our students have chosen:

Artificial Intelligence MSc	Investment Analysis MSc
Big Data MSc	Marketing MSc
Business and Management MSc	Media Management MSc
International Accounting and Finance MSc	Sport Management MSc
International Business MSc	TESOL MSc

Please note that course availability may change.

Progress to Year 3 of an undergraduate degree at the University of Stirling

Start date
3 term: Oct or Jan
4 term: Jun or Oct

English language entry requirements*
3 term: IELTS 5.5 (with a minimum of 5.5 in all subskills) or equivalent.
4 term: IELTS 5.0 (with a minimum of 5.0 in all subskills) or equivalent.

Age requirement
17 years and above**

* All students commencing courses for the September start date must be 17 years old by 01 September of that calendar year.
** If you do not meet the minimum English language requirements, you should apply for our Academic English course. See page 17 for more information.

International Diploma Business, Finance, Marketing and Humanities - BFMH



Scan the QR code to find out more.

- › Opportunity to progress to an undergraduate degree at Stirling Management School or the University of Stirling's Faculty of Arts and Humanities.

You will need to earn 120 credits from the following modules:

Core modules:
Study Skills (20 credits)
English for Undergraduate Study (20 credits)
Mathematics and Statistics (20 credits)

Specialist modules:
Accounting and Finance (20 credits)
Economics (20 credits)
Human Resource Management (20 credits)
Introduction to Marketing (20 credits)
Management and Organisation (20 credits)
Political Concepts and Ideas (20 credits)
Sociology (20 credits)

Study in Scotland

As well as offering direct entry to a degree at the University of Stirling, our International Foundation and Graduate Diploma programmes offer you preparation for entry to a wide range of undergraduate and postgraduate degrees at other leading Scottish universities.

Choosing your university

Choosing to study abroad is a big decision. But at INTO Stirling, we are here to support you on the journey towards your perfect degree at one of our Scottish university progression options.

No matter your goal, we are committed to helping you reach it. We offer a guaranteed pathway to a wide range of Scottish universities, and with hundreds of degree programmes to choose from, you are sure to find the ideal degree for you. If you can't decide on a university or a degree, we offer personalised support to help you choose.

Personalised support

- Regular one-to-one sessions with our Student Services team, where you can discuss your university progression options in detail.
- Visits from our university partners to the INTO Centre to discuss your progression options and visits to our partner universities to find out more about studying there.
- University masterclasses, where you'll gain essential application skills such as writing a personal statement and preparing a portfolio.
- Additional support if you are applying to a top university, such as preparation for university interviews with practice interviews.



Progress to Year 2 of an undergraduate degree at the University of Stirling or other leading Scottish universities[†]

Start date

3 term: Oct or Jan
4 term: Jun or Oct

English language entry requirements*

3 term: IELTS 5.0 (with a minimum of 4.5 in all subskills) or equivalent.

4 term: IELTS 4.5 (with a minimum of 4.0 in all subskills) or equivalent.

Age requirement

17 years and above**



1st in the UK for Pharmacology and Pharmacy

(The Times and The Sunday Times Good University Guide 2021)



1st in the UK for Accounting and Finance

(The Times and The Sunday Times Good University Guide 2021)



Top 5 in the UK for Electrical and Electronic Engineering

(The Times and The Sunday Times Good University Guide 2021)

* All students commencing courses for the September start date must be 17 years old by 01 September of that calendar year.

** If you do not meet the minimum English language requirements, you should apply for our Academic English course. See page 17 for more information.

† The International Foundation offers progression to Year 1 of an undergraduate degree at some Scottish universities. For further details, please contact the INTO admissions office.

International Foundation

Business, Finance, Economics and Marketing - FBFEM



Scan the QR code to find out more.

- Benefit from opportunities to develop the presentation and communication skills required to pitch products and business ideas before you progress to a degree.

You will need to earn 120 credits from the following modules:

Core modules:

Core Mathematics and Statistics (20 credits)
English Language for Academic Purposes (20 credits)
Study Skills for Business and Humanities (20 credits)

Specialist modules:

Introduction to Business (40 credits)
Introduction to Economics (20 credits)
Introduction to Psychology (20 credits)
Principles of Accounting (20 credits)
Principles of Computing (20 credits)
Understanding Media (20 credits)

Media, Humanities and Social Sciences - FMHSS



Scan the QR code to find out more.

- Benefit from practical learning during your pathway programme, including the opportunity to observe political and legal systems with trips to courts and parliament.

You will need to earn 120 credits from the following modules:

Core modules:

Core Mathematics and Statistics (20 credits)
English Language for Academic Purposes (20 credits)
Study Skills for Business and Humanities (20 credits)

Specialist modules:

Introduction to Business (40 credits)
Introduction to International Politics (20 credits)
Introduction to Journalism (20 credits)
Introduction to Law (20 credits)
Introduction to Psychology (20 credits)
Study of Society (20 credits)
Understanding Media (20 credits)

Science, Sport, Computing and Engineering - FSSCE



Scan the QR code to find out more.

- Benefit from opportunities to attend lectures at the University of Stirling during your pathway, broadening the knowledge learnt in practical classes.

You will need to earn 120 credits from the following modules:

Core modules:

Core Mathematics and Statistics (20 credits)
English Language for Academic Purposes (20 credits)
Study Skills for Science (20 credits)

Specialist modules:

Biology (20 credits)
Chemistry (20 credits)
Introduction to Business (40 credits)
Introduction to Psychology (20 credits)
Introduction to Sports Studies (20 credits)
Physics (20 credits)
Principles of Computing (20 credits)
Pure and Applied Mathematics (40 credits)

Progression to other Scottish universities

The tables below give you an indication of the undergraduate degrees at other Scottish universities that you can progress to once you complete an International Foundation at INTO University of Stirling.

Progress from an International Foundation to...							
Abertay University	HERIOT-WATT UNIVERSITY	Queen Margaret University EDINBURGH	THE UNIVERSITY of EDINBURGH	UNIVERSITY OF ABERDEEN	University of Dundee	University of Strathclyde Glasgow	UNIVERSITY OF THE WEST OF SCOTLAND UWS
<ul style="list-style-type: none">Accounting and FinanceBusiness and ManagementComputingEngineeringMediaPsychologyScienceSocial SciencesSport and Exercise	<ul style="list-style-type: none">Accounting and FinanceBusiness and Management	<ul style="list-style-type: none">Business and ManagementMediaPsychologySocial SciencesSport and Exercise	<ul style="list-style-type: none">Accounting and FinanceBusiness and ManagementComputingEngineeringPsychologyScienceSocial SciencesSport and Exercise	<ul style="list-style-type: none">Accounting and FinanceBusiness and ManagementComputingEngineeringScienceSocial Sciences	<ul style="list-style-type: none">Accounting and FinanceBusiness and ManagementComputingEngineeringMediaPsychologyScienceSocial SciencesSport and Exercise	<ul style="list-style-type: none">Accounting and FinanceBusiness and ManagementComputingEngineeringMediaPsychologyScienceSocial SciencesSport and Exercise	<ul style="list-style-type: none">Business and ManagementComputingEngineeringMediaPsychologyScienceSport and Exercise

Guaranteed offer for Year 2 of your undergraduate degree

The following Scottish Universities will issue a guaranteed offer letter to students on our International Foundation programmes for Year 2 of four-year undergraduate degrees. Progression is subject to you achieving the specified results and meeting all other terms and conditions specified in their offer letters.

University of Dundee undergraduate degrees

Degree	Pathway(s)	English level	Final grade
Civil Engineering BSc (Hons)	FSSCE	60%*	65%
Civil Engineering Design & Manufacture BEng (Hons)	FSSCE	60%*	65%
Electronic Engineering BEng (Hons)	FSSCE	60%*	65%
Electronic Engineering and Physics BEng (Hons)	FSSCE	60%*	65%
Mechanical Engineering BEng (Hons)	FSSCE	60%*	65%
Mechanical Engineering and Renewables BEng (Hons)	FSSCE	60%*	65%
Pharmacology BSc (Hons)	FSSCE	60%*	60%

University of Strathclyde undergraduate degrees

Degree	Pathway(s)	English level	Final grade
Accounting and Finance BA (Joint Hons)	FBFEM	60%*	50% for Year 1 Entry, Year 2 Entry not available
Aero-mechanical Engineering BEng (Hons)	FSSCE	60%*	50% for Year 1 Entry, 60% for Year 2 Entry
Architectural Studies BSc (Hons)	FSSCE	60%*	50% for Year 1 Entry, Year 2 Entry not available
Biomedical Engineering BEng (Hons)	FSSCE	60%*	50% for Year 1 Entry, 60% for Year 2 Entry
Business Analysis and Technology and Business Law BA (Hons)	FBFEM	60%*	50% for Year 1 Entry, 60% for Year 2 Entry
Business Enterprise and Hospitality and Tourism Management BA (Hons)	FBFEM	60%*	50% for Year 1 Entry, 60% for Year 2 Entry
Chemical Engineering BEng (Hons)	FSSCE	60%*	50% for Year 1 Entry, 60% for Year 2 Entry
Civil Engineering BEng (Hons)	FSSCE	60%*	50% for Year 1 Entry, 60% for Year 2 Entry
Education and Psychology BA (Hons)	FMHSS	60%*	50% for Year 1 Entry, Year 2 Entry not available
Education and TESOL BA (Hons)	FMHSS	60%*	50% for Year 1 Entry, Year 2 Entry not available
Electrical and Electronic Engineering BEng (Hons)	FSSCE	60%*	50% for Year 1 Entry, 60% for Year 2 Entry
International Business BA (Hons)	FBFEM	60%*	50% for Year 1 Entry, 60% for Year 2 Entry
Journalism, Media and Communication and Economics BA (Hons)	FMHSS	60%*	50% for Year 1 Entry, 60% for Year 2 Entry
Journalism, Media and Communication and Human Resource Management BA (Hons)	FMHSS	60%*	50% for Year 1 Entry, 60% for Year 2 Entry
Law LLB	FBFEM	60%*	50% for Year 1 Entry, Year 2 Entry not available
Marketing and Psychology BA (Joint Hons)	FBFEM	60%*	50% for Year 1 Entry, 60% for Year 2 Entry
Mechanical Engineering BEng (Hons)	FSSCE	60%*	50% for Year 1 Entry, 60% for Year 2 Entry

* With a minimum of 55% in each subskill.

Progress to a postgraduate degree at the University of Stirling or other leading Scottish universities

Start date
3 term: Oct, Jan or Mar

English language entry requirements*
3 term: IELTS 5.5 (with a minimum of 5.5 in each subskill) or equivalent.

Age requirement
17 years and above**

* If you do not meet the minimum English language requirements, you should apply for our Academic English course. See page 17 for more information.

** All students commencing courses for the September start date must be 17 years old by 01 September of that calendar year.

Graduate Diploma

Business, Finance and Sport - GDBFS



Scan the QR code to find out more.

- Develop your specialist subject knowledge and explore research areas of interest during your pathway programme, to pursue in more detail once you progress.
- Progress to a postgraduate degree at Stirling Management School, the University of Stirling's Faculty of Health Sciences and Sport, or another Scottish university.

What will I study?
You will need to earn 120 credits from the following modules:

Academic English and Communication for Graduate Study (20 credits)	Quantitative or Qualitative Research Methods (20 credits)
Critical Thinking (20 credits)	Research Design (20 credits)
Management and Organisation (20 credits)	Study Skills for Graduate Study (20 credits)

Media, Humanities and Social Sciences - GDMHSS



Scan the QR code to find out more.

- During your pathway programme, you will be able to attend specialist lectures and seminar sessions at the University to prepare you for university teaching.
- Opportunity to progress to a postgraduate degree at Stirling's Faculty of Arts and Humanities, Faculty of Social Sciences, or another Scottish university.

What will I study?
You will need to earn 120 credits from the following modules:

Academic English and Communication for Graduate Study (20 credits)	Quantitative or Qualitative Research Methods (20 credits)
Critical Thinking (20 credits)	Research Design (20 credits)
Exploring Media, Humanities and Social Sciences (20 credits)	Study Skills for Graduate Study (20 credits)

Science, Computing and Engineering - GDSCE




Scan the QR code to find out more.

- Benefit from an in-depth knowledge of research principles, methods and ethics, as well as mathematical and statistical theories and industry concepts.
- Progress to a postgraduate degree in Artificial Intelligence or Big Data at Stirling, or a degree in science, computing or engineering at another Scottish university.

What will I study?
You will need to earn 120 credits from the following modules:

Core modules: Academic English and Communication for Graduate Study (20 credits) Critical Thinking (20 credits) Quantitative or Qualitative Research Methods (20 credits) Research Design (20 credits) Study Skills for Graduate Study (20 credits)	Specialist module: Subject-specific module tailored towards your degree subject (20 credits)
---	--



Pre-Master's - PM

This course is for you if:

- You want to study a postgraduate degree at the University of Stirling and need to improve your English language skills and develop key research and study skills first.

What will I study?
You will need to earn 40 credits (1-term) or 80 credits (2-term) from the following modules to successfully complete the Pre-Master's and progress to a postgraduate degree at the University of Stirling:

Academic English and Communication Skills for Graduate Study (10 credits)

Study Skills for Graduate Study (10 credits)

Critical Thinking (20 credits)

Research Design (20 credits – 2-term only)

Quantitative or Qualitative Research Methods (20 credits – 2-term only)



Academic English

This course is for you if:

- You want to study an English course that is more than language learning – you'll develop the academic skills needed to successfully study in the UK.
- You want to benefit from studying in an English-speaking environment where you can easily practice your language skills and immerse yourself in the culture.

How will Academic English benefit me?

- Focus on reading, writing, speaking and listening in a context that reflects the skills you must have in order to succeed at university.
- Gain the academic study skills you need to succeed in further UK education.
- Extended International Foundation and International Diploma courses available with a term of Academic English in one programme.



Pre-sessional English

This course is for you if:

- You are academically qualified and hold an offer from the University of Stirling.
- You need to improve your English language skills to the level required for your degree.

How will Pre-sessional English benefit me?

- Improve your core English skills in listening, speaking, reading and writing.
- Adjust to living and studying in the UK and to the style, challenges and expectations of the UK higher education system.
- On completion of the Pre-sessional English course, you will be able to successfully progress to your chosen degree at the University of Stirling.

"We not only practice communication skills in class but we also encourage students to engage with everyone outside the classroom by joining University clubs and societies, which allow for further development of their English language skills."

Kevyn Whitelaw
English Language Programme Manager, INTO University of Stirling

Progress to a postgraduate degree at the University of Stirling

Start date
1 term: Oct or Jun
2 term: Jan or Mar

English language entry requirements
1 term: IELTS 5.5 (with at least 2 subskills at 5.5 and no less than 5.0 in any subskill) or equivalent.
2 term: IELTS 5.0 (with no less than 5.0 in any subskill) or equivalent.

Age requirement
21 years and above

Class size and hours
Maximum of 16 students for English teaching
20 hours per week on average

Improve your English language skills to prepare for further academic study

Start date
1–4 terms: Oct, Jan, Mar or Jun
6 weeks: Jul

English language entry requirements
From IELTS 3.0

Age requirement
16 years and above

Class size and hours
Maximum of 16 students
30 learning hours per week, with
25 hours of face-to-face contact

Improve your English language skills to the level required by your chosen degree

Start date*
10 weeks: Jun or Oct
6 weeks: Jul

English language entry requirements
Suitable for students with current IELTS levels between 5.0 and 6.5 and who need to improve their IELTS score by either 0.5 (6-week course) or 1.0 (10-week course).

Visit the University of Stirling website for details of the English language level required for direct entry to your chosen degree.

Age requirement
16 years and above

Class size and hours
Maximum of 16 students
24 hours per week on average

* Dates are provisional and subject to change.

Progression degree overview table

There are more than 100 progression degree options at the University of Stirling. You can progress to any of these from one of our INTO University of Stirling programmes. Below is a selection of some of the most popular. See pages 10-17 for more details. Find comprehensive information on all academic programmes, degree options and progression requirements at: www.intostudy.com/stirling/courses

University of Stirling undergraduate degrees

Degree	IF	ID	IV1†	IV2†	Pathway(s)	Specific module requirements	English level	Final grade
Accounting BA (Hons)	•	•	•	•	FBFEM or BFMH	FBFEM: Principles of Accounting. BFMH: Accounting and Finance; Economics.	60%*	50%
Accounting and Business Studies BA (Hons)	•		•		FBFEM	Principles of Accounting; Introduction to Business.	60%*	50%
Accounting and Economics BA (Hons)	•		•		FBFEM	Principals of Accounting; Introduction to Economics.	60%*	50%
Accounting and Finance BA (Hons)	•		•		FBFEM	Principals of Accounting; Introduction to Business or Introduction to Economics.	60%*	50%
Accounting and Marketing BA (Hons)	•		•		FBFEM	Principles of Accounting; Introduction to Business.	60%*	50%
Animal Biology BSc (Hons)	•		•		FSSCE	Biology.	60%*	50%
Applied Mathematics BSc (Hons)	•		•		FSSCE	Pure and Applied Mathematics.	60%*	50%
Biology BSc (Hons)	•		•		FSSCE	Biology.	60%*	50%
Biology and Mathematics BSc (Hons)	•		•		FSSCE	Biology; Pure and Applied Mathematics.	60%*	50%
Biology and Psychology BSc (Hons)	•		•		FSSCE	Biology; Introduction to Psychology.	60%*	50%
Business Computing BSc (Hons)	•		•		FSSCE	Principles of Computing.	60%*	50%
Business Studies BA (Hons)	•	•	•	•	FBFEM or BFMH	FBFEM: Introduction to Business. BFMH: Management and Organisation.	60%*	50%
Business Studies and Computing Science BA (Hons)	•		•		FBFEM	Introduction to Business.	60%*	50%
Business Studies and Economics BA (Hons)	•		•		FBFEM	Introduction to Business; Introduction to Economics.	60%*	50%
Business Studies and Film/Media BA (Hons)	•		•		FMHSS	Introduction to Business; Study of Society or Understanding Media.	60%*	50%
Business Studies and Finance BA (Hons)	•		•		FBFEM	Introduction to Business; Principles of Accounting.	60%*	50%
Business Studies and HRM BA (Hons)	•		•		FBFEM	Introduction to Business.	60%*	50%
Business Studies and Marketing BA (Hons)	•		•		FBFEM	Introduction to Business.	60%*	50%
Business Studies and Psychology BA (Hons)	•		•		FMHSS	Introduction to Business; Introduction to Psychology.	60%*	50%
Cell Biology BSc (Hons)	•		•		FSSCE	Biology.	60%*	50%
Computing Science BSc (Hons)	•		•		FSSCE	Principles of Computing.	60%*	50%
Computing Science and Mathematics BSc (Hons)	•		•		FSSCE	Pure and Applied Mathematics; Principles of Computing.	60%*	50%
Criminology and Sociology BA (Hons)	•		•	•	FMHSS	Study of Society.	60%*	50%
Data Science BSc (Hons)	•		•		FSSCE	Pure and Applied Mathematics; Principles of Computing.	60%*	50%
Economics BA (Hons)	•		•		FBFEM	Introduction to Economics.	60%*	50%
Economics and Finance BA (Hons)	•		•		FBFEM	Introduction to Economics; Principles of Accounting.	60%*	50%
Economics and Marketing BA (Hons)	•		•		FBFEM	Introduction to Economics; Introduction to Business.	60%*	50%
Environmental Geography BSc (Hons)	•		•		FSSCE	Biology or Chemistry.	60%*	50%
Environmental Science BSc (Hons)	•		•		FSSCE	40 credits from Biology; Chemistry; Pure and Applied Mathematics.	60%*	50%
Environmental Science and Mathematics BSc (Hons)	•		•		FSSCE	Pure and Applied Mathematics and either Biology or Chemistry.	60%*	50%
Events Management BA (Hons)	•		•		FBFEM	Introduction to Business.	60%*	50%
Film and Media BA (Hons)	•		•		FMHSS	Study of Society; Understanding Media.	60%*	50%
Film and Media and Journalism Studies BA (Hons)	•		•		FMHSS	Introduction to Journalism; Understanding Media.	60%*	50%
Film and Media and Marketing BA (Hons)	•		•		FMHSS	Introduction to Marketing; Understanding Media.	60%*	50%
Film and Media and Psychology BA (Hons)	•		•		FMHSS	Introduction to Psychology; Understanding Media.	60%*	50%
Film and Media and Sociology BA (Hons)	•		•		FMHSS	Study of Society; Understanding Media.	60%*	50%
Film and Media and Sports Studies BA (Hons)	•		•		FSSCE or FMHSS	Either Study of Society or Understanding Media and Introduction to Sports Studies.	60%*	50%
Finance and Investment BA (Hons)	•	•	•	•	FBFEM or BFMH	FBFEM: Principles of Accounting. BFMH: Accounting and Finance; Economics.	60%*	50%
Human Resource Management BA (Hons)	•	•	•	•	FBFEM or BFMH	FBFEM: Introduction to Business. BFMH: Human Resource Management; Management and Organisation.	60%*	50%
Human Resource Management and Marketing	•		•		FBFEM	Introduction to Business.	60%*	50%
Human Resource Management and Psychology BA (Hons)	•		•		FMHSS	Introduction to Psychology.	60%*	50%
International Politics BA (Hons)	•		•		FMHSS	Introduction to International Politics.	60%*	50%
International Politics and Languages BA (Hons)	•		•		FMHSS	Introduction to Journalism; Understanding Media and evidence of language ability in desired language.	60%*	50%
Journalism Studies BA (Hons)	•		•		FMHSS	Introduction to Journalism; Understanding Media.	60%*	50%
Journalism Studies and Politics BA (Hons)	•		•		FMHSS	Introduction to Journalism; Understanding Media; Introduction to International Politics.	60%*	50%
Journalism Studies and Sports Studies BA (Hons)	•		•		FMHSS	Introduction to Journalism; Understanding Media; Introduction to Sports Studies.	60%*	50%

Degree	IF	ID	IV1†	IV2†	Pathway(s)	Specific module requirements	English level	Final grade
Law BA (Hons)	•				FMHSS		60%*	50%
Management BSc (Hons)	•	•	•	•	FBFEM or BFMH	FBFEM: Introduction to Business. BFMH: Management and Organisation.	60%*	50%
Marketing BA (Hons)	•	•	•	•	FBFEM or BFMH	FBFEM: Introduction to Business. BFMH: Introduction to Marketing.	60%*	50%
Marketing and Psychology BA (Hons)	•		•		FMHSS	Introduction to Psychology; Introduction to Business.	60%*	50%
Marine Biology BSc (Hons)	•		•		FSSCE	Biology.	60%*	50%
Mathematics BSc (Hons)	•		•		FSSCE	Pure and Applied Mathematics.	60%*	50%
Mathematics and Psychology BSc (Hons)	•		•		FSSCE	Pure and Applied Mathematics; Introduction to Psychology.	60%*	50%
Politics BA (Hons)	•		•		FMHSS	Introduction to International Politics.	60%*	50%
Politics and Psychology BA (Hons)	•		•		FMHSS	Introduction to International Politics; Introduction to Psychology.	60%*	50%
Politics and Social Policy BA (Hons)	•		•		FMHSS	Introduction to International Politics.	60%*	50%
Politics and Sociology BA (Hons)	•		•		FMHSS	Introduction to International Politics.	60%*	50%
Psychology BSc (Hons)	•		•		FSSCE	Introduction to Psychology.	60%*	50%
Psychology and Sociology BA (Hons)	•		•		FSSCE	Introduction to Psychology; Study of Society.	60%*	50%
Retail Marketing BA (Hons)	•	•	•	•	FBFEM or BFMH	FBFEM: Introduction to Business. BFMH: Introduction to Marketing.	60%*	50%
Sociology and Social Policy BA (Hons)	•		•	•	FMHSS	Study of Society.	60%*	50%
Software Engineering BSc (Hons)	•		•		FSSCE	Principles of Computing.	60%*	50%
Sports Studies BA (Hons)	•		•		FSSCE	Introduction to Sports Studies.	60%*	50%

University of Stirling postgraduate degrees

Degree	PM†	GD	PGD†	Pathway	Specific module requirements	English level	Final grade
Applied Social Research MSc	•	•	•	GDMHSS		65%*	50%
Applied Social Research (Criminology) MSc		•	•	GDMHSS		65%*	50%
Applied Social Research (Social Statistics and Social Research) MSc	•	•	•	GDMHSS		65%*	50%
Artificial Intelligence MSc	•	•	•	GDSCE		60%*	50%
Banking and Finance MSc	•	•	•	GDBFS		60%*	50%
Behavioural Decision Making for Finance MSc		•	•	GDBFS		60%*	50%
Big Data MSc	•	•	•	GDSCE		60%*	50%
Business Analytics MSc	•	•	•	GDBFS		60%*	50%
Business and Management MSc	•	•	•	GDBFS	Management and Organisation.	60%*	50%
Criminology MSc		•	•	GDMHSS		65%* (60% in each subskill)	50%
Data Science for Business MSc	•	•	•	GDBFS		60%*	50%
Economics for Business and Policy MSc		•	•	GDBFS		60%*	50%
Finance MSc	•	•	•	GDBFS	Quantitative Research Methods	60%*	50%
Finance and Economics MSc	•	•	•	GDBFS	Quantitative Research Methods	60%*	50%
Finance and Risk Management MSc	•	•		GDBFS	Quantitative Research Methods	60%*	50%
Human Resource Management MSc		•	•	GDBFS	Management and Organisation.	60%*	50%
International Accounting and Finance MSc	•	•	•	GDBFS	Quantitative Research Methods	60%*	50%
International Business MSc	•	•	•	GDBFS		60%*	50%
Investment Analysis MSc	•	•	•	GDBFS	Quantitative Research Methods	60%*	50%
Management and English Language Teaching MSc		•	•	GDMHSS		65% (60% in speaking and listening and 65% in reading and writing)	50%
Marketing MSc	•	•	•	GDBFS		60%*	50%
MBA	•	•	•	GDBFS		60%*	50%
Media Management MSc	•	•	•	GDMHSS		60%*	50%
Public Policy MPP		•	•	GDMHSS		65% (60% in each subskill)	50%
Publishing Studies MLitt		•	•	GDMHSS		60%*	50%
Sport Management MSc	•	•	•	GDBFS		65%*	50%
Strategic Public Relations and Communication Management MSc		•	•	GDMHSS		65% (60 min in each subskill)	50%
Strategic Sustainable Business MSc		•	•	GDBFS		60%*	50%
TESOL (Teaching English to Speakers of Other Languages) MSc	•	•	•	GDMHSS		65%* (60% in speaking and listening and 65% in reading and writing)	50%

* With a minimum of 55% in each subskill.
† IV1 requirements are the same as the International Foundation; IV2 are the same as the International Diploma; PGD and PM are the same as the International Graduate Diploma.

Dates and prices

The cost of your programme may vary depending on factors including the pathway chosen and programme length. The following guide to costs is based on pricing for the current academic year and provides an indication of the cost of attendance for some of our pathways. For specific cost information, please refer online: www.intostudy.com/stirling/courses

Estimated cost of attendance based on prices for current academic year 2021–2022

Study length	Tuition	Accommodation	Books and fees	Airport pick up†	Insurance	Total
Academic programmes*						
International Foundation (3 term)	£16,475	£5,775-£6,650	£390-£790	£70	£357	£22,997-£24,272
International Foundation (4 term)	£18,495	£8,575-£8,841	£465-£865	£70	£466	£28,001-£28,667
International Diploma (3 term)	£16,475	£5,775-£6,650	£390	£70	£357	£22,997-£23,872
International Diploma (4 term)	£18,495	£8,575-£8,841	£465	£70	£466	£28,001-£28,267
Graduate Diploma (3 term)	£16,475	£5,775-£6,650	£390-£790	£70	£357	£22,997-£24,272
Pre-Master's (1 term)	£5,375	£2,275	£390	£70	£122	£8,162
Pre-Master's (2 term)	£10,750	£3,675-£4,466	£390	£70	£196	£15,011-£15,802
English language courses						
1 term**	£4,430	£1,925-£2,275	£80	£70	£122	£6,557-£6,907

Start months and term dates

Academic programmes		Academic English		Pre-sessional English†	
June (4 term)	Mon 13 Jun 2022-Fri 02 Jun 2023	October (1 term)	Mon 03 Oct 2022-Fri 16 Dec 2022	June (10 weeks)	Mon 20 Jun 2022-Fri 26 Aug 2022
October (4 term)	Mon 03 Oct 2022-Fri 25 Aug 2023	January (1 term)	Mon 09 Jan 2023-Fri 10 Mar 2023	July (6 weeks)	Mon 18 Jul 2022-Fri 26 Aug 2022
October (3 term)	Mon 03 Oct 2022-Fri 02 Jun 2023	March (1 term)	Mon 20 Mar 2023-Fri 02 Jun 2023	October (10 weeks)	Mon 26 Sep 2022-Fri 02 Dec 2022
January (3 term)	Mon 09 Jan 2023-Fri 25 Aug 2023	June (1 term)	Mon 12 Jun 2023-Fri 25 Aug 2023		
January (2 term)	Mon 09 Jan 2023-Fri 02 Jun 2023	July (6 weeks)	Mon 03 Jul 2023-Fri 25 Aug 2023		
March (2 term)	Mon 20 Mar 2023-Fri 25 Aug 2023				

Please note the dates and prices shown are for the current academic year of 01 September 2021 – 31 August 2022 and are for indicative purposes only. All students who confirm their offer on or before 31 January 2022 will pay the 2021/2022 price as per their existing offer letter. After 31 January 2022, where tuition fees have increased or dates changed, students will receive a new offer letter detailing the new 2022/2023 pricing and dates. For full details of term dates, please visit the relevant course page at www.intostudy.com/stirling/courses

* Prices shown are for our stand-alone university preparation courses only. Prices for year 1 of our courses, which combine a pathway with a degree programme under a single CAS, are the same as the stand-alone prices. Prices for subsequent years are in line with University tuition fees.

** The price will depend on your start date and length of study. Prices shown are only for one term. Vacation weeks in between terms are extra and will be charged at the weekly accommodation price.

† Please note airport pickup is optional and is not included in the total.

‡ Dates are provisional and subject to change.



Apply via your local INTO educational counsellor

If you would like us to put you in contact with one of our counsellors, please contact us.



Apply online

Complete our online application form: apply.intostudy.com



Need some help with your tuition fees?

Check to see if you're eligible for a scholarship: www.intostudy.com/stirling/scholarships

Discover more online

For students:

www.intostudy.com/stirling

For education counsellors:

partnerportal.intoglobal.com/stirling

Connect with us



Contact us

Enquiries and applications:

ukes@intoglobal.com

or +44 1273 876040

Visit the Centre:

intocontact@stir.ac.uk

or +44 1786 466255

Centre address details:

INTO University of Stirling

University of Stirling

Stirling

FK9 4LA

Scotland

United Kingdom

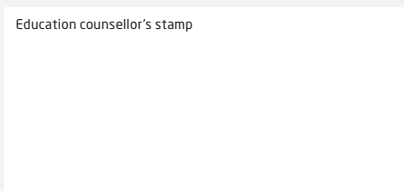


Through innovative partnerships with leading universities, we expand opportunities for higher education, ensuring success and transforming the lives of our students and staff.

INTO GIVING

Working across the globe, INTO Giving supports projects that increase access to education and improve the quality of teaching and learning. For more information visit www.into-giving.com

Education counsellor's stamp



UNIVERSITY of
STIRLING

