

**INTO** 



**QUEEN'S  
UNIVERSITY  
BELFAST**

**RUSSELL  
GROUP**

**SHAPING A  
BETTER WORLD  
SINCE 1845**

**UNIVERSITY PATHWAYS  
FOR INTERNATIONAL  
STUDENTS  
2022-23**



# START SOMETHING AMAZING

Welcome to INTO Queen's University Belfast, your pathway to a degree from Queen's University Belfast – a world-leading university with a global reputation. We give international students like you the opportunity to study at a Russell Group university – one of the UK's 24 elite research-intensive institutions.

You'll study a specialist programme designed exclusively for international students and tailored to the requirements of the University. You'll complete your pathway course at our Study Centre in Belfast's vibrant Queen's Quarter – and with access to cutting-edge facilities on campus, you'll become part of the University community from the day you arrive.

Choosing to study abroad is a big decision, but at INTO Queen's University Belfast, we'll give you everything you need to succeed at university and beyond.

**CHOOSE #INTOQUEENS AND OPEN UP A LIFETIME OF OPPORTUNITIES.**

**95% PASSED**

**93%** of which were **ELIGIBLE** to progress

Passed: % of students who passed, of those who completed their pathway

Eligible: % of students eligible to progress to Queen's University Belfast, of those who passed their pathway



**TOP 200 WORLDWIDE**

(Times Higher Education World University Rankings 2021)



**TOP 140 IN THE WORLD FOR GRADUATE PROSPECTS**

(QS Graduate Employability Rankings 2020)



**LOWEST STUDENT RENT IN THE UK**

(NatWest Student Living Index 2020)

## QUEEN'S UNIVERSITY BELFAST'S TOP-RANKED SUBJECT AREAS



**4TH IN THE UK**  
for Pharmacy and Pharmacology\*



**5TH IN THE UK**  
for Food Science\*



**7TH IN THE UK**  
for Architecture\*



**7TH IN THE UK**  
for Accounting and Finance ‡



**TOP 100 IN THE WORLD**  
for Nursing\*\*



**TOP 150 IN THE WORLD**  
for Life Sciences†



**TOP 150 IN THE WORLD**  
for Law\*\*



**TOP 200 IN THE WORLD**  
for Chemical Engineering\*\*

\* The Complete University Guide 2022

\*\* QS World Rankings by Subject 2021

† Times Higher Education World University Rankings 2021

‡ Times and Sunday Times Good University Guide 2021



# ABOUT THE UNIVERSITY



An Architecture student in the School of Natural And Built Environment



An aerial view of the Queen's University Belfast campus

Start something amazing at Queen’s University Belfast, one of the UK’s leading universities known for its history, research and world-class education. With cutting-edge facilities in an exciting capital city, Queen’s is an incredible place to live, learn and grow.

**EXCELLENCE SINCE 1845**

Queen’s was founded by Queen Victoria in 1845, making it the 9th oldest university in the UK – and has been shaping a better world ever since. Known as ‘Ireland’s Oxbridge’, Queen’s is part of the Russell Group, meaning that it’s one of the UK’s 24 elite research-intensive universities – combining proven excellence in research and education with a progressive student-centric ethos.

**CUTTING-EDGE FACILITIES**

Queen’s is dedicated to investing in your future, with a £700 million development currently underway. So far, £350 million has been spent on improving facilities, including:

- the Financial Trading Room with Bloomberg terminals
- the award-winning and technology-rich McClay library
- the Centre for Cancer Research and Cell Biology
- interdisciplinary health and life science research facilities
- new Computer Science and Biological Science buildings

**A GLOBAL COMMUNITY**

You’ll be joining a diverse and forward-thinking community of staff and students at Queen’s University Belfast. Queen’s is globally connected and networked, with a dedicated International Student Support Team to help you make the most of your studies. With such a global reach, it’s no wonder that the University is expanding its impact on a local, national and worldwide scale.

**COST-EFFECTIVE LEARNING**

Queen’s is consistently ranked among the top universities in the world, but it offers competitive tuition fees – and Belfast has the lowest student rent costs in the UK (NatWest Student Living Index 2020). Ranking in the top 140 in the world for graduate prospects (QS Graduate Employability Rankings 2020), a career-defining education from Queen’s University Belfast is a wise investment in your future.

“Queen’s enjoys an enviable reputation for research intensity, for international collaborations and for commercialisation. When coupled with Queen’s reputation for an outstanding and innovative student experience, the University is ideally placed to inspire students and prepare them for successful careers.”

Professor Ian Greer  
President and Vice-Chancellor of Queen’s University Belfast



The Sonic Laboratory, a unique multi-functional research lab/concert hall



The McClay Library



A student of Engineering



**TOP 10 IN THE UK FOR  
UNIVERSITY FACILITIES**  
(TIMES HIGHER EDUCATION STUDENT  
EXPERIENCE SURVEY 2018)



# LIFE ON CAMPUS

You'll study your pathway course on the Queen's University campus, an inspiring location with a mix of modern design and historical architecture – not to mention fantastic learning facilities. Surrounded by the buzz of student life and within walking distance of Belfast city centre, it's the perfect setting for your journey at Queen's University Belfast.

### YOUR STUDY CENTRE

The INTO Study Centre is close to everything on campus, from the library to the Students' Union – so you'll be immersed in university life from day one. Inside the Centre, you'll find:

- fully-equipped classrooms
- the Learning Resource Centre, with study areas, workstations and IT support
- lots of spaces for reading, studying and group work
- the friendly and helpful Student Support team
- Café Carberry, serving tasty drinks and snacks

### SUPPORTING YOU EVERY STEP OF THE WAY

Our Student Services team will help you settle in to life in Belfast. Throughout your time at the Centre, you'll have access to a range of excellent support services, including:

- help opening a bank account and registering with a doctor
- an academic tutor who you can talk to about your course
- a 24-hour emergency telephone number
- visa application support and workshops
- one-on-one progression support, progression events and open days



### TOP SPECIALIST FACILITIES

Depending on your pathway you can make use of:

- Film, music and theatre studios
- First Derivatives Trading Room
- Robotics laboratory
- Virtual reality theatre



### GET INVOLVED

There's more to campus life than just studying. From the moment you arrive, you can get involved in exciting social events, giving you the opportunity to get to know your new classmates. We'll help make sure that your first year is smooth, comfortable, and full of lifelong memories. You can enjoy:

- a welcome and induction programme in your first week
- day trips, excursions and celebrations
- 200+ clubs and societies at the Queen's Students' Union

"INTO Queen's is a perfect place to study, as the teachers and staff are so supportive and helpful. The study environment is fun, and students come from different countries and backgrounds – so we can learn more about different cultures and make friends with people from all around the world!"

Jesselyn, Indonesia  
BSc (Hons) Actuarial Science and Risk Management, Queen's University Belfast  
INTO Queen's Student Ambassador



Students kayaking in the Physical Education Centre



The First Derivatives Trading Room



Group study in the McClay Library



The award-winning McClay Library



# DISCOVER BELFAST

A modern capital city with the warm and friendly vibe of a small community, Belfast is a wonderful place to live and study. Its buzzing social scene, cultural attractions and historic architecture are all packed into an affordable city that's easy and safe to explore.

## SOCIAL AND CULTURAL SCENE

Friendly pubs and cool clubs give Belfast its reputation as one of Europe's most sociable cities, and world-class attractions document its rich history and culture. You can discover:

- naturally beautiful Botanic Gardens
- live music in the Cathedral Quarter
- Dock Market, for the best of the city's art and independent fashion
- authentic global cuisine on Botanic Avenue

## GRADUATE EMPLOYABILITY

When it comes to employment, Belfast is a great place to start your journey – even ranking in the top 10 UK cities to develop a digital career (Monster's Digital Cities 2019). It's also home to global companies in a range of thriving industries, including:

- Bombardier Inc.
- Almac
- PricewaterhouseCoopers
- Citigroup Inc.

"I absolutely loved my trip to the Dark Hedges, which is a famous filming location for the HBO Series 'Game of Thrones'. It felt very surreal being there as I had only ever seen it on TV. Belfast is surrounded by beautiful natural landscape, so you can live in a city but also explore the countryside."

Xuanxin, China  
Graduate Diploma in Social Sciences, INTO Queen's University Belfast



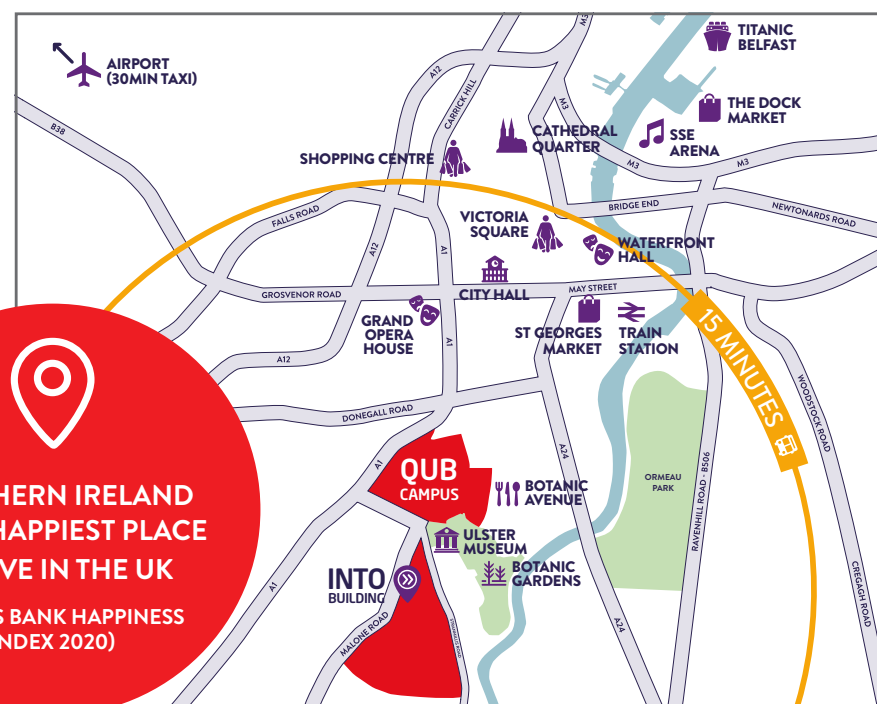
The Botanic Gardens



The Giant's Causeway



Titanic Belfast



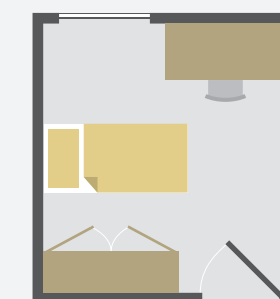
# HOME FROM HOME

With a choice of student residences close to the Centre, it's easy for you to find the perfect place to stay. Independent living in an international community is the perfect combination when you study overseas.



## WILLOW WALK

A comfortable, private double room which is your space to look after and enjoy. You'll share a bathroom and kitchen with other students. There's also a lounge area with a TV, perfect for socialising.

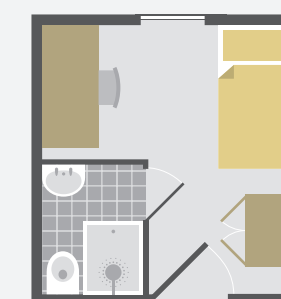


Example room layout and information

- 10 MIN Walk to INTO Centre
- Laundry facilities
- Wi-Fi
- On-site staff

## ELMS BT1, BT2 AND BT9

Enjoy living in this modern village-style en suite residence with a shared kitchen. At 'The Treehouse' in the heart of the village you can find a restaurant, bar, shop and a community area for socialising and games. Everything you need in one place!



Example room layout and information

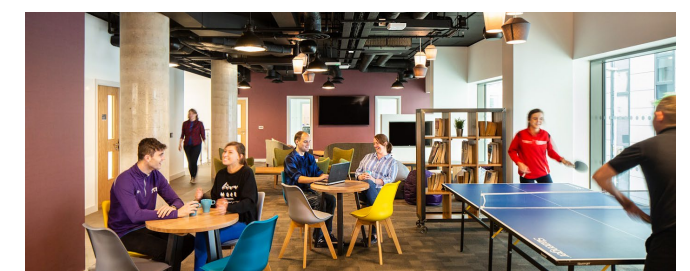
- 10 MIN Walk to INTO Centre
- Laundry facilities
- Wi-Fi
- On-site staff
- En suite bathroom

## CATERING

Accommodation is self-catered and you can add credit to a 'Queen's Easy Pay' card to buy snacks, drinks and meals sold around campus.

## SUPPORTING YOU

In the residences you'll find 24/7 security staff and resident life co-ordinators who are there to keep you safe and provide excellent support. If you are under 18, we offer extra support from Residence Assistants.



## ACCOMMODATION GUARANTEE

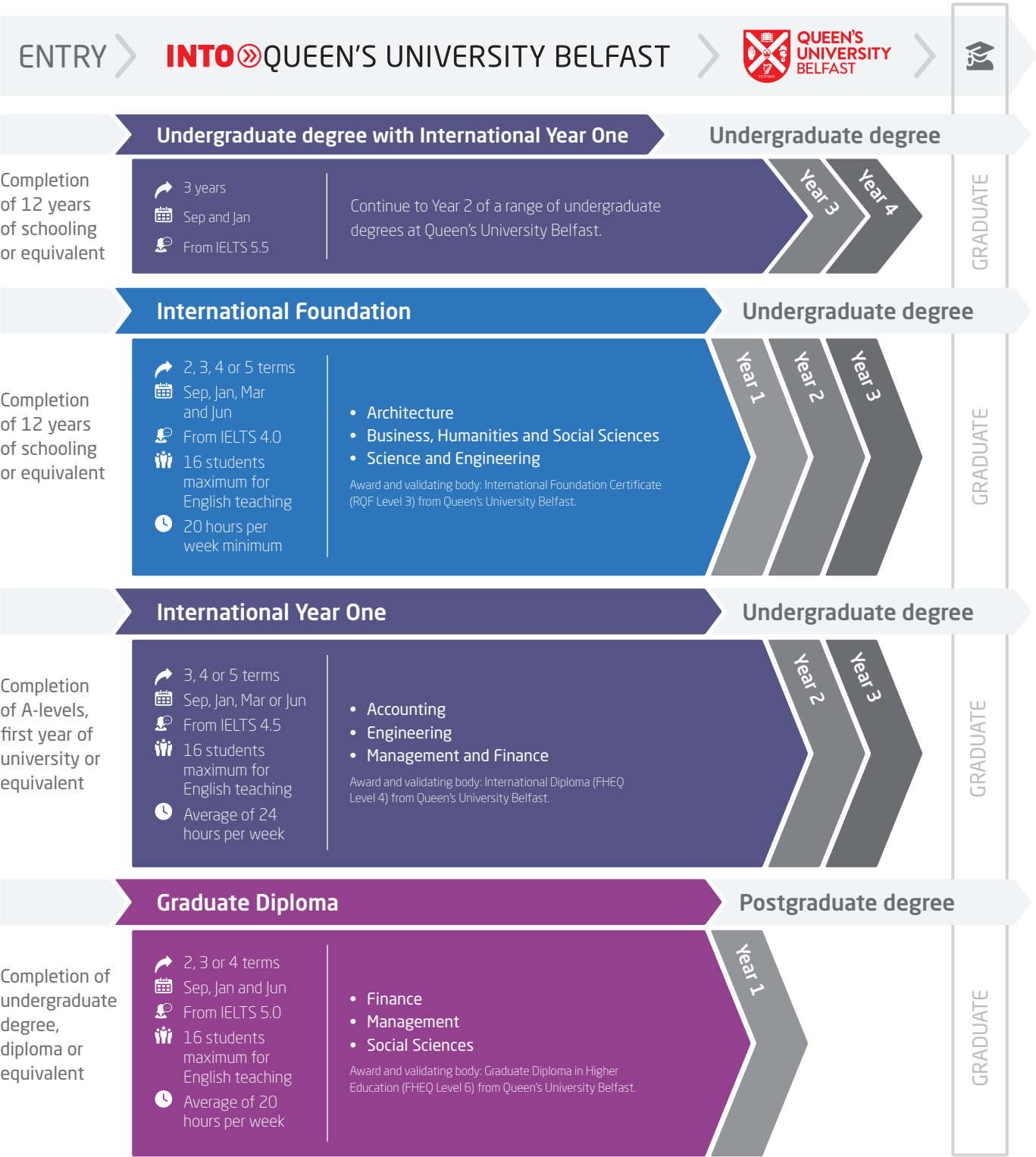
When you progress you will be guaranteed student residence accommodation during the first year of your degree at Queen's.

INTO Queen's University Belfast aims to provide the accommodation requested. However, there may be occasions when INTO Queen's University Belfast is unable to provide the requested accommodation and reserves the right to offer an alternative type of accommodation instead. The price for any alternative accommodation may differ and will be confirmed to students at the time of their offer.



Choosing your course

Prepare for you university degree with our tailored academic pathway programmes. Each programme is designed in partnership with Queen's University Belfast and accredited by the Quality Assurance Agency for Higher Education. You'll benefit from university-style teaching for subject-based modules and high academic standards. Then, when it comes to progressing to your chosen degree, we'll support you with your university application.



International Year One

Undergraduate degree

Completion of A-levels, first year of university or equivalent

3, 4 or 5 terms

Sep, Jan, Mar or Jun

From IELTS 4.5

16 students maximum for English teaching

Average of 24 hours per week

Accounting

Engineering

Management and Finance

Award and validating body: International Diploma (FHEQ Level 4) from Queen's University Belfast.

Year 2

Year 3

GRADUATE

Graduate Diploma

Postgraduate degree

Completion of undergraduate degree, diploma or equivalent

2, 3 or 4 terms

Sep, Jan and Jun

From IELTS 5.0

16 students maximum for English teaching

Average of 20 hours per week

Finance

Management

Social Sciences

Award and validating body: Graduate Diploma in Higher Education (FHEQ Level 6) from Queen's University Belfast.

Year 1

GRADUATE

We also offer **English courses**. Go to page 18 for more information.

Please note that course length and start month options may vary depending on the pathway chosen. Please visit [www.intostudy.com/queens/courses](http://www.intostudy.com/queens/courses) for full information.



Undergraduate Degree with International Year One

- > A 3-year Engineering degree with additional support for international students.
- > Complete the course on a single visa, with no need to renew for the duration of your studies.

**Modules**  
You will need to earn 120 credits from the following module options to successfully complete Year 1 of your study plan:

**Core modules**  
English Language and Study Skills (20 credits)  
Engineering Mathematics 1 (10 credits)  
Engineering Mathematics 2 (10 credits)

**Specialist modules**  
The table below provides information about the modules you will need to study based on the degree option chosen.

	Degree						
	Aerospace Engineering BEng (Hons)	Chemical Engineering BEng (Hons)	Civil Engineering BEng (Hons)	Computer Science BEng (Hons)	Electrical and Electronic Engineering BEng (Hons)	Mechanical Engineering BEng (Hons)	Product Design Engineering BEng (Hons)
Aerospace Principles	•						
Basic Chemistry 1		•					
Basic Chemistry 2		•					
Computer Programming				•	•		
Communications				•	•		
Circuit Principles 1				•	•		
Circuit Principles 2				•	•		
Civil Engineering Principles			•				
Drawing and Design	•	•	•			•	•
Digital Systems Design				•	•		
Dynamics	•					•	•
Electrical and Electronic Engineering						•	•
Electronic Materials and Devices				•	•		
Electrical Power and Machines				•	•		
Engineering Design and Practise				•	•		
Fluid Mechanics	•	•	•			•	•
Geotechnics			•				
Heat and Mass Transfer		•					
Introduction to Chemical Engineering		•					
Materials and Manufacture	•	•	•			•	•
Mechanical Principles	•		•			•	•
Structural and Stress Analysis	•		•			•	•
Surveying			•				
Thermodynamics	•	•				•	•

• Semester 1 • Semester 2

Combine International Year One study with a Queen's University Belfast degree

Year 1 of study plan

**Start date**  
Sep or Jan

**English language entry requirements\***  
IELTS 5.5 (with a minimum of 5.5 in each subskill) or equivalent

Please note that in addition to the UKVI IELTS, INTO is able to accept other English language qualifications. For more information on accepted qualifications please see: [www.intostudy.com/self-alternatives](http://www.intostudy.com/self-alternatives)

**Age requirement**  
16 years and above\*\*

\* If you have not decided on your degree or you do not meet the minimum English language entry requirements, you may qualify for International Year One in Engineering. See page 14 for details.

\*\* All students commencing courses on a published September start date must be 17 years old by 31 December of that calendar year. For all other start dates, students must be 17 years old on the published start date of the programme.

Study an Engineering degree at Queen's University Belfast:

**6th**  
in the UK for Electronic and Electrical Engineering  
(The Times and The Sunday Times Good University Guide 2021)

**Top 150**  
in the world for Computer Science  
(Times Higher Education World University Rankings by Subject 2021)

**Top 250**  
in the world for Mechanical Engineering  
(QS World University Rankings by Subject 2021)



Progress to Year 1 of an undergraduate degree at Queen's University Belfast

Start date

3 term: Sep or Jan  
4 term: Jun or Sep  
5 term: Jun or Mar

English language entry requirements\*

3 term: IELTS 5.0 (with a minimum of 5.0 in writing and 4.5 in all other subskills) or equivalent

4 term: IELTS 4.5 (with a minimum of 4.5 in writing and 4.0 in all other subskills) or equivalent

5 term: IELTS 4.0 (with a minimum of 4.0 in all subskills) or equivalent

Age requirement

16 years and above

Start date

2 term: Mar  
3 term: Sep or Jan  
4 term: Jun or Sep  
5 term: Jun or Mar

English language entry requirements\*

2 term: IELTS 6.0 (with a minimum of 5.5 in writing and 4.5 in all other subskills) or equivalent

3 term: IELTS 5.0 (with a minimum of 5.0 in writing and 4.5 in all other subskills) or equivalent

4 term: IELTS 4.5 (with a minimum of 4.5 in writing and 4.0 in all other subskills) or equivalent

5 term: IELTS 4.0 (with a minimum of 4.0 in all subskills) or equivalent

Age requirement

16 years and above

Start date

2 term: Mar  
3 term: Sep or Jan  
4 term: Jun or Sep  
5 term: Jun or Mar

English language entry requirements\*

2 term: IELTS 6.0 (with a minimum of 5.5 in all subskills) or equivalent\*

3 term: IELTS 5.0 (with a minimum of 5.0 in writing and 4.5 in all other subskills) or equivalent

4 term: IELTS 4.5 (with a minimum of 4.5 in writing and 4.0 in all other subskills) or equivalent

5 term: IELTS 4.0 (with a minimum of 4.0 in all subskills) or equivalent

Age requirement

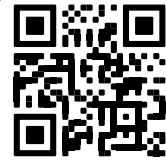
16 years and above

\* If you do not meet the minimum English language requirements you should apply for our Academic English course. See page 18 for more information.

International Foundation

Architecture - IFA

Progress to 2 degrees. Scan the QR code to find out more.



- › Draw and make detailed models in workshop-style classes.
- › Learn from qualified architects with real-world experience.

What will I study?

You will need to earn 120 credits from the following module options to successfully complete your pathway programme:

Core modules

English Language and Study Skills (30 credits)  
Practical Skills for Art Portfolio (30 credits)  
Principles of Architectural Design and Practice (30 credits)

Plus one of the following modules:

Foundation Politics and International Relations (30 credits)  
Foundation Mathematics for Business, Humanities and Social Sciences (30 credits)

Business, Humanities and Social Sciences - IFBHSS

Progress to 29 degrees. Scan the QR code to find out more.



- › Progress to a wide range of degrees, from Film Production to Business Management.
- › Learn outside the classroom through interactive field trips, which have previously included visits to the Law Courts and Parliament Buildings.

What will I study?

You will need to earn 120 credits from the following modules to successfully complete your pathway programme:

English Language and Study Skills (30 credits)  
Foundation Business Studies (30 credits)  
Foundation Economics (30 credits)  
Foundation Mathematics for Business, Humanities and Social Sciences (30 credits)  
Foundation Mathematics for Engineering and Science (30 credits)

Foundation Politics and International Relations (30 credits)  
Further Mathematics for Engineering and Science (30 credits)

Science and Engineering- IFPSE

Progress to 102 degrees. Scan the QR code to find out more.



- › Study one of two streams determined by your progression degree: Engineering and Physical Sciences or Health and Life Sciences.
- › A 2-term accelerated programme is available for applicants with a higher English language level.

What will I study?

You will need to earn 120 credits from the following module options to successfully complete your pathway programme:

English Language and Study Skills (30 credits)  
Foundation Mathematics for Engineering and Science (30 credits)

Plus two of the following options:

Foundation Biology (30 credits)  
Foundation Chemistry (30 credits)  
Foundation Physics (30 credits)  
Further Mathematics for Engineering and Science (30 credits)

International Foundation

There are more than 170 International Foundation progression degree options at Queen's University Belfast. Below is a selection of some of the most popular. See page 12 for more details on the pathways.

Degree	Pathway(s)	Specific requirements	English level
Accounting BSc (Hons)	IFBHSS	ABB and GCSE Mathematics grade B or equivalent	B with a minimum of D in each component
Actuarial Science and Risk Management BSc (Hons)	IFBHSS	AAA	B with a minimum of D in each component
Aerospace Engineering BEng (Hons)*	IFPSE	BBC including Mathematics and at least one from Physics (preferred), Biology, Chemistry or Further Mathematics, and GCSE Physics grade 4/C or equivalent	C with a minimum of D in each component
Anthropology BA (Hons)	IFBHSS	BBC	B with a minimum of D in each component
Applied Mathematics and Physics BSc (Hons)*	IFPSE	ABC	C with a minimum of D in each component
Architecture BSc (Hons)	IFA	ABB and GCSE Mathematics grade C or equivalent, plus evidence of artistic ability	B with a minimum of C in Speaking and Listening and D in Reading and Writing
Audio Engineering BSc (Hons)	IFPSE	BBB including Mathematics and at least one from Physics (preferred), Biology, Chemistry or Further Mathematics, and GCSE Physics grade C or equivalent	B with a minimum of D in each component
Biochemistry BSc (Hons)	IFPSE	BBB	B with a minimum of D in each component
Biological Sciences BSc (Hons)	IFPSE	BBB	B with a minimum of D in each component
Biomedical Science BSc (Hons)	IFPSE	ABB	B with a minimum of D in each component
Broadcast Production BA (Hons)	IFBHSS	BBB	B with a minimum of D in each component
Business Economics BSc (Hons)	IFBHSS	BBB and GCSE Mathematics grade B or equivalent	B with a minimum of D in each component
Business Information Technology with Professional Experience BSc (Hons)	IFBHSS or IFPSE	BBB including professional experience	B with a minimum of D in each component
Business Management with Placement BSc (Hons)	IFBHSS	BBB and GCSE Mathematics grade B or equivalent	B with a minimum of D in each component
Chemical Engineering BEng (Hons)*	IFPSE	BBC with B in Mathematics and at least one from Biology, Chemistry or Physics, and GCSE Chemistry and Physics grade C or equivalent	C with a minimum of D in each component
Chemistry BSc (Hons)*	IFPSE	BBC	C with a minimum of D in each component
Civil Engineering BEng (Hons)*	IFPSE	BBC including Mathematics and at least one from Biology, Chemistry, or Physics, and GCSE Physics grade C or equivalent	C with a minimum of D in each component
Computing and Information Technology with Professional Experience BSc (Hons)	IFPSE	BBB and GCSE Mathematics grade C or equivalent including professional experience	C with a minimum of D in each component
Drama BA (Hons)	IFBHSS	BBC	B with a minimum of D in each component
Economics BSc (Hons)	IFBHSS	BBB and GCSE Mathematics grade B or equivalent (grade A required if Mathematics is not taken as an International Foundation module)	B with a minimum of D in each component
Economics and Accounting BSc (Hons)	IFBHSS	BBB and GCSE Mathematics grade B or equivalent	B with a minimum of D in each component
Economics with Finance BSc (Hons)	IFBHSS	BBB and GCSE Mathematics grade B or equivalent (grade A required if Mathematics is not taken as an International Foundation module)	B with a minimum of D in each component
Electrical and Electronic Engineering BEng (Hons)*	IFPSE	BBC with B in Mathematics and at least one from Physics (preferred), Biology, Chemistry or Further Mathematics, and GCSE Physics grade C or equivalent	C with a minimum of D in each component
Environmental and Civil Engineering MEng (Hons)	IFPSE	ABB with A in Mathematics, B in Biology, Chemistry or Physics, and GCSE Physics grade B or equivalent	C with a minimum of D in each component
Environmental Management BSc (Hons)	IFPSE	BBB	B with a minimum of D in each component
European Planning MPlan	IFPSE	BBB	B with a minimum of D in each component
Film and Theatre Making BA (Hons)	IFBHSS	BBB	B with a minimum of D in each component
Film Studies and Production BA (Hons)	IFBHSS	BBC	B with a minimum of D in each component
Finance with a Year in Industry BSc (Hons)	IFBHSS	ABB and GCSE Mathematics grade B or equivalent	B with a minimum of D in each component
Food Quality, Safety and Nutrition BSc (Hons)	IFPSE	BBB	B with a minimum of D in each component
International Politics and Conflict Studies BSc (Hons)	IFBHSS	BBB	B with a minimum of D in each component
Law LLB (Hons)	IFBHSS	ABB	B with a minimum of D in each component
Mechanical Engineering BEng (Hons)	IFPSE	BBC with B in Mathematics and at least one from Physics (preferred), Biology, Chemistry or Further Mathematics, and GCSE Physics grade C or equivalent	C with a minimum of D in each component
Music and Audio Production BA (Hons)	IFBHSS	BBB	B with a minimum of D in each component
Music and Sound Design BA (Hons)	IFBHSS	BBB	B with a minimum of D in each component
Pharmacy MPharm (Hons)	IFPSE	AAB	B with a minimum of C in each component
Politics BA (Hons)	IFBHSS	BBB	B with a minimum of D in each component
Product Design Engineering BEng (Hons)	IFPSE	BBC (Mathematics and at least one from Physics (preferred), Biology, Chemistry or Further Mathematics) and GCSE Physics grade C or equivalent	C with a minimum of D in each component
Professional Nursing (Adult) BSc (Hons)	IFPSE	CCC including Biology or Chemistry or Mathematics or Physics + 5 GCSE subjects at grade C or equivalent, including Mathematics and a Science subject (Chemistry, Physics or Biology) – grade B preferred	A with a minimum Listening, Speaking and Reading, and a minimum of B in Writing
Psychology BSc (Hons)	IFPSE	BBB	B with a minimum of D in each component
Sociology BA (Hons)	IFBHSS	BBC	B with a minimum of D in each component
Software Engineering BEng (Hons)	IFPSE	BBC including Mathematics or BBC including Physics or Chemistry and GCSE Mathematics grade C or equivalent	C with a minimum of D in each component
Structural Engineering with Architecture MEng (Hons)	IFPSE	ABB	C with a minimum of D in each component

Find comprehensive information on all academic pathway programmes, degree options and progression requirements at: [www.intostudy.com/queens/courses](http://www.intostudy.com/queens/courses)

\* Master's option available.

Degree option with a placement also available.



Progress to Year 2 of an undergraduate degree at Queen's University Belfast

Start date

3 term: Sep or Jan  
4 term: Jun or Sep  
5 term: Jun or Mar

English language entry requirements\*

3 term: IELTS 5.5 (with a minimum of 5.5 in reading and writing and 5.0 in all other subskills) or equivalent

4 term: IELTS 5.0 (with a minimum of 5.0 in reading and writing and 4.5 in all other subskills) or equivalent

5 term: IELTS 4.5 (with a minimum of 4.5 in all other subskills) or equivalent

To combine your International Year One in Engineering and Undergraduate Degree in one study plan, see page 11.

Age requirement

16 years and above

\* If you do not meet the minimum English language requirements you should apply for our Academic English course. See page 18 for more information.

Prepare to progress to a degree at Queen's University Belfast:



7th in the UK for Accounting and Finance

(The Times and The Sunday Times Good University Guide 2021)



Top 150 in the world for Computer Science

(Times Higher Education World University Rankings by Subject 2021)



Top 200 in the world for Electronic and Electrical Engineering

(QS World University Rankings by Subject 2021)

International Year One

Accounting - IYOA



Progress to 2 degrees. Scan the QR code to find out more.

- Develop experience analysing statistics and writing detailed financial reports.
- Learn how to use specialist accounting software.

What will I study?

You will need to earn 120 credits from the following modules to successfully complete your pathway programme:

English Language and Study Skills (20 credits)  
Accounting Information Systems (10 credits)  
Introduction to Legal Studies and Basic Contract Law (20 credits)

Introduction to Management Accounting (20 credits)  
Statistical Methods for Business (10 credits)  
Introduction to Financial Accounting (20 credits)  
Principles of Economics (20 credits)

Engineering - IYOE



Progress to 39 degrees. Scan the QR code to find out more.

- Choose from a number of specialist Engineering sub-pathways.
- Gain hands-on experience through laboratory work and learn from PhD level subject lecturers.

What will I study?

You will need to earn 120 credits from the following module options to successfully complete your pathway programme:

Core modules

English Language and Study Skills (20 credits)  
Engineering Mathematics 1 (10 credits)  
Engineering Mathematics 2 (10 credits)

8 specialist modules for:

Aerospace Engineering, Chemical Engineering, Civil Engineering, Electrical and Electronic Engineering and Mechanical Engineering

Management and Finance - IYOMF



Progress to 5 degrees. Scan the QR code to find out more.

- Learn to analyse case studies and discuss current economic affairs.
- Develop key skills in business reporting, presentation and data analysis.

What will I study?

You will need to earn 120 credits from the following module options to successfully complete your pathway programme:

Core modules

English Language and Study Skills (20 credits)  
Statistical Methods for Business (10 credits)  
Principles of Economics (20 credits)  
Introduction to Financial Management and Accounting (20 credits)

Specialist modules

Financial Institute and Markets (20 credits)  
Mathematics for Finance (20 credits)  
Price Theory (10 credits)  
Management and Organisation: Theory and Practice (20 credits)  
The Business Environment (20 credits)  
Marketing (10 credits)

International Year One

There are more than 40 International Year One progression degree options at Queen's University Belfast. See page 14 for more details on the pathways.

Degree	Pathway(s)	Specific requirements	English level
Accounting BSc (Hons)	IYOA	50% overall average in academic modules. A minimum of 50% in Mathematics for Statistics and Business, Introduction to Financial Accounting, Introduction to Management Accounting, and Introduction to Legal Study and Basic Contract Law	B with a minimum of D in each component
Aerospace Engineering BEng (Hons)** †	IYOE	A pass with Commendation with a minimum average of 60% and passes in all 10 modules	C with a minimum of D in each component
Business Economics BSc (Hons)	IYOMF	50% overall average in academic modules. A minimum of 50% in Management and Organisation: Theory and Practice, Principles of Economics, and The Business Environment, and passes in all other modules	B with a minimum of D in each component
Business Management with Placement BSc (Hons)	IYOMF	50% overall average in academic modules. A minimum of 50% in Management and Organisation: Theory and Practice, Principles of Economics, and The Business Environment; and passes in all other modules	B with a minimum of D in each component
Chemical Engineering BEng (Hons)** †	IYOE	A pass with Commendation with a minimum average of 60% and passes in all 10 modules	C with a minimum of D in each component
Civil Engineering BEng (Hons)** †	IYOE	A pass with Commendation with a minimum average of 60% and passes in all modules	C with a minimum of D in each component
Computer Science with Professional Experience BSc (Hons)**	IYOE	A pass with Commendation with a minimum average of 60% and passes in all 10 modules including professional experience	C with a minimum of D in each component
Computing and Information Technology with Professional Experience BSc (Hons)	IYOE	A pass with Commendation with a minimum average of 60% and passes in all 10 modules including professional experience	C with a minimum of D in each component
Economics BSc (Hons)	IYOMF	50% overall average in academic modules. A minimum of 50% in Principles of Economics; Financial Institutions and Markets; and Mathematics for Finance and Economics, and passes in all other modules	B with a minimum of D in each component
Economics and Accounting BSc (Hons)	IYOA	50% overall average in academic modules. A minimum of 50% in Mathematics for Statistics and Business, Introduction to Financial Accounting, Introduction to Management Accounting, and Introduction to Legal Study and Basic Contract Law	B with a minimum of D in each component
Economics with Finance BSc (Hons)	IYOMF	50% overall average in academic modules. A minimum of 50% in Principles of Economics; Financial Institutions and Markets; and Mathematics for Finance and Economics, and passes in all other modules	B with a minimum of D in each component
Electrical and Electronic Engineering BEng (Hons)** †	IYOE	A pass with Commendation with a minimum average of 60% and passes in all 10 modules	C with a minimum of D in each component
Environmental and Civil Engineering MEng (Hons)** †	IYOE	A pass with High Commendation with a minimum average of 70% and passes in all 10 modules	C with a minimum of D in each component
Finance with a Year in Industry BSc (Hons)	IYMF	50% overall average in academic modules. A minimum of 55% in Financial Institutions and Markets; a minimum of 50% Maths for Finance, Principles of Economics; and passes in all other module	B with a minimum of D in each component
Mechanical Engineering BEng (Hons)** †	IYOE	A pass with Commendation with a minimum average of 60% and passes in all 10 modules	C with a minimum of D in each component
Product Design Engineering BEng (Hons)* †	IYOE	A pass with Commendation with a minimum average of 60% and passes in all 10 modules	C with a minimum of D in each component
Software and Electronic Systems Engineering BEng (Hons)* †	IYOE	A pass with Commendation with a minimum average of 60% and passes in all 10 modules	C with a minimum of D in each component
Software Engineering BEng (Hons)* †	IYOE	A pass with Commendation with a minimum average of 60% and passes in all 10 modules	C with a minimum of D in each component
Structural Engineering MEng (Hons) †	IYOE	A pass with High Commendation with a minimum average of 70% and passes in all 10 modules	C with a minimum of D in each component

Please note: English level and academic progression requirements are correct to the best of our knowledge at the time of going to print. In some circumstances these may change throughout the year - please visit [www.intostudy.com/queens](http://www.intostudy.com/queens) for the most up to date information. Progression requirements, including English level and final grade, may be higher for degrees with an integrated Master's.

\* Master's option available. † International Year One with Undergraduate Degree is also available.



"The modules were crafted specifically to meet my degree requirements and I am enjoying my degree at university. Progression to Year Two of my degree was not that difficult from the International Year One programme. With the help of amazing professors who are always there to take the time to help you along the way, you can achieve your goals."

Mustafa, Pakistan  
BEng (Hons) Mechanical Engineering, Queen's University Belfast



Progress to a postgraduate degree at Queen's University Belfast

Start date

3 term: Sep or Jan  
4 term: Jun or Sep

English language entry requirements\*

3 term: IELTS 5.5 (with a minimum of 5.5 in all subskills) or equivalent

4 term: IELTS 5.0 (with a minimum of 5.0 in all subskills) or equivalent

Please note that in addition to the UKVI IELTS, INTO is able to accept other English language qualifications. For more information on accepted qualifications please see: [www.intostudy.com/self-alternatives](http://www.intostudy.com/self-alternatives)

Age requirement

18 years and above

Start date

2 term: Mar  
3 term: Sep or Jan  
4 term: Jun or Sep

English language entry requirements\*

2 term: IELTS 6.0 (with a minimum of 5.5 in all subskills) or equivalent

3 term: IELTS 5.5 (with a minimum of 5.5 in all subskills) or equivalent

4 term: IELTS 5.0 (with a minimum of 5.0 in all subskills) or equivalent

Please note that in addition to the UKVI IELTS, INTO is able to accept other English language qualifications. For more information on accepted qualifications please see: [www.intostudy.com/self-alternatives](http://www.intostudy.com/self-alternatives)

Age requirement

18 years and above

\* If you do not meet the minimum English language requirements you should apply for our Academic English course. See page 18 for more information.

Prepare to progress to a degree at Queen's University Belfast:

Top 150

in the world for Law

(QS World University Rankings by Subject 2021)

Graduate Diploma

Finance - GDF

Progress to 8 degrees. Scan the QR code to find out more.

- Study real-world international business case studies.
- Attend guest lectures at Queen's for access to the latest developments in your subject.

What will I study?

You will need to earn 120 credits from the following modules to successfully complete your pathway programme:

Accounting for Financial Management (20 credits)	Financial Econometrics (20 credits)
English Language Study Skills (40 credits)	Financial Market Theory and Investment Analysis (20 credits)
Financial and Economic Strategy (20 credits)	

Management - GDM

Progress to 22 degrees. Scan the QR code to find out more.

- Analyse and interpret the practices of global businesses.
- Continue learning outside of the classroom through interactive field trips.

What will I study?

You will need to earn 120 credits from the following modules to successfully complete your pathway programme:

Business in an International Context (20 credits)	Empirical Enquiry and Critical Thought (20 credits)
Business Management – Environment, Theory and Practice (20 credits)	English Language Study Skills (40 credits)
	Exploring Culture (20 credits)

Social Sciences - GDSS

Progress to 32 degrees. Scan the QR code to find out more.

- Progress to a range of postgraduate degrees in subjects such as Law, Education, Leadership, Arts Management and Translation/Interpreting.
- Keep up-to-date with the latest developments in Social Science by attending guest lectures at the University.

What will I study?

You will need to earn 120 credits from the following modules to successfully complete your pathway programme:

Empirical Enquiry and Critical Thought (20 credits)	Exploring Culture (20 credits)
English Language Study Skills (40 credits)	Foundations of Social Science (20 credits)
	Research Design (20 credits)



Graduate Diploma

There are more than 47 Graduate Diploma progression degree options at Queen's University Belfast. See page 16 for more details on the pathways.

Degree	Pathway(s)	Specific requirements	English level
Accounting and Finance MSc	GDF	60% overall in academic modules, with no module score less than 50%	B with a minimum of D in each component
Applied Developmental Psychology MSc	GDSS	60% overall in academic modules, with no module score less than 50%	B with a minimum of D in each component
Arts Management MA	GDM or GDSS	60% overall in academic modules, with no module score less than 50%	B with a minimum of D in each component
Autism Spectrum Disorders MSc	GDM or GDSS	60% overall in academic modules, with no module score less than 50%	B with a minimum of D in each component
Business Administration MBA	GDF or GDM	60% overall in academic modules, with no module score less than 50%. Applicants must also have a minimum of 5 years' relevant post-graduation employment experience	B with a minimum of D in each component
Business Analytics MSc	GDF	60% overall in academic modules, with no module score less than 50%	B with a minimum of D in each component
Children's Rights MSc	GDM or GDSS	60% overall in academic modules, with no module score less than 50%	B with a minimum of D in each component
City Planning and Design MSc	GDM	60% overall in academic modules, with no module score less than 50%	B with a minimum of D in each component
Clinical Health Psychology MSc	GDSS	60% overall in academic modules, with no module score less than 50%	B with a minimum of D in each component
Conflict Transformation and Social Justice MA	GDSS	60% overall in academic modules, with no module score less than 50%	B with a minimum of D in each component
Construction and Project Management MSc	GDF or GDM	60% overall in academic modules, with no module score less than 50%	B with a minimum of D in each component
Criminology and Criminal Justice LLM	GDM or GDSS	60% overall in academic modules, with no module score less than 50%	B with a minimum of D in each component
Economics MSc	GDF	60% overall in academic modules, with no module score less than 50%	B with a minimum of D in each component
Educational Leadership MSc	GDM or GDSS	60% overall in academic modules, with no module score less than 50%	B with a minimum of D in each component
Film MA	GDSS	60% overall in academic modules, with no module score less than 50%	B with a minimum of D in each component
Finance MSc	GDF	60% overall in academic modules, with no module score less than 50%	B with a minimum of D in each component
Geopolitics MA	GDSS	60% overall in academic modules, with no module score less than 50%	B with a minimum of D in each component
Global Health MPHGH	GDSS	60% overall in academic modules, with no module score less than 50%	B with a minimum of C in each component
History MA	GDSS	60% overall in academic modules, with no module score less than 50%	B with a minimum of D in each component
Human Resources Management MSc	GDM	60% overall in academic modules, with no module score less than 50%	B with a minimum of D in each component
Human Rights Law LLM	GDM or GDSS	60% overall in academic modules, with no module score less than 50%	B with a minimum of D in each component
Inclusion and Special Educational Needs MEd	GDM or GDSS	60% overall in academic modules, with no module score less than 50%	B with a minimum of D in each component
International Business MSc	GDM or GDSS	60% overall in academic modules, with no module score less than 50%	B with a minimum of D in each component
International Business Law LLM	GDM or GDSS	60% overall in academic modules, with no module score less than 50%	B with a minimum of D in each component
International Relations MA	GDSS	60% overall in academic modules, with no module score less than 50%	B with a minimum of D in each component
Interpreting MA	GDSS	60% overall in academic modules, with no module score less than 50%	B with a minimum of D in each component
Law LLM	GDSS	60% overall in academic modules, with no module score less than 50%	B with a minimum of D in each component
Leadership for Sustainable Development MSc	GDM or GDSS	60% overall in academic modules, with no module score less than 50%	C with a minimum of D in each component
Leadership for Sustainable Rural Development MSc	GDM or GDSS	60% overall in academic modules, with no module score less than 50%	C with a minimum of D in each component
Management MSc	GDM	60% overall in academic modules, with no module score less than 50%	B with a minimum of D in each component
Marketing MSc	GDM	60% overall in academic modules, with no module score less than 50%	B with a minimum of D in each component
Media and Broadcast Production MA	GDSS	60% overall in academic modules, with no module score less than 50%	B with a minimum of D in each component
Planning and Development MSc	GDM or GDSS	60% overall in academic modules, with no module score less than 50%	B with a minimum of D in each component
Politics MA	GDSS	60% overall in academic modules, with no module score less than 50%	B with a minimum of D in each component
Psychological Science MSc	GDM	60% overall in academic modules, with no module score less than 50%	B with a minimum of D in each component
Public Health MPH	GDSS	60% overall in academic modules, with no module score less than 50%	B with a minimum of C in each component
Public History MA	GDSS	60% overall in academic modules, with no module score less than 50%	B with a minimum of D in each component
Risk and Investment Management MSc	GDF	60% overall in academic modules, with no module score less than 50%	B with a minimum of D in each component
Software Development MSc	GDM or GDSS	60% overall in academic modules, with no module score less than 50%	C with a minimum of D in each component
TESOL MSc	GDSS	60% overall in academic modules, with no module score less than 50%	B with a minimum of D in each component
Translation MA	GDSS	60% overall in academic modules, with no module score less than 50%	B with a minimum of D in each component
Violence Terrorism and Security MA	GDSS	60% overall in academic modules, with no module score less than 50%	B with a minimum of D in each component
Youth Justice MSc	GDSS	60% overall in academic modules, with no module score less than 50%	B with a minimum of D in each component
Master's in Law MLAW	GDSS	60% overall in academic modules, with no module score less than 50%	B with a minimum of D in each component

Degree option with a placement also available.

Please note: English level and academic progression requirements are correct to the best of our knowledge at the time of going to print. In some circumstances these may change throughout the year - please visit [www.intostudy.com/queens](http://www.intostudy.com/queens) for the most up to date information.



"Teachers here are so supportive. They don't just support me with my studies, they also always care about my mental health. Studying with INTO will make my Master's degree easier, as I can get used to the UK education system."

Huaxin, China  
Graduate Diploma, INTO Queen's University Belfast  
INTO QUB Student Ambassador



Improve your English language skills to prepare for further academic study

#### Start date

1-4 terms: Sep, Jan, Mar or Jun

#### English language entry requirements

From: IELTS 3.0 or equivalent\*

#### Age requirement

16 years and above

#### Class size and hours

Typically 16 students per class  
30 learning hours per week, with  
25 hours of face-to-face contact

## English courses

Study English at Queen's University Belfast to improve your English level fast with tailored, personalised support and for the smoothest transition to further UK academic studies.

### EN Academic English

#### This course is for you if:

- > You want to study an English course that is more than language learning – you'll develop the academic skills needed to successfully study in the UK.
- > You want to benefit from studying in an English-speaking environment where you can easily practice your language skills and immerse yourself in the culture.

#### How will Academic English benefit me?

- Focus on reading, writing, speaking and listening in a context that reflects the skills you must have in order to succeed at Queen's University Belfast.
- Taught by professionals with strong backgrounds in Academic English, in particular who have worked with students who wish to study for a degree at a UK university.
- Extended International Foundation, International Year One and Graduate Diploma courses available with 1-2 terms of Academic English in one programme.



#### What skills will I finish the course with?

- The ability to perform academic research that will support academic writing.
- An understanding of how to complete essays in the correct format and style that will be required for the discipline you'll be studying.
- The skills you'll need to give academic and professional presentations, both individually and as part of a group.
- The ability to better understand academic lectures and participate in class and group discussions that are often required of academic classes.

### EN Pre-sessional English

#### This course is for you if:

- > You are academically qualified and hold an offer from Queen's University Belfast.
- > You need to improve your English language skills to the level required for your degree.

#### How will Pre-sessional English benefit me?

- Improve your core English skills in listening, speaking, reading and writing.
- Gain practical, hands on experience of attending seminars, writing academic essays and creating presentations.
- Daily lessons are designed to be fun, engaging and easy to understand, but are also challenging and there to prepare you for future academic success.
- On completion of the Pre-sessional English course, you will be able to successfully progress to your chosen degree at Queen's University Belfast.

Accredited by the



for the teaching  
of English in the UK

All our English language courses at INTO  
Queen's University Belfast have received  
accreditation from the British Council.

Improve your English language skills to the level required for your chosen degree

#### Start date

10 weeks: Jun  
6 weeks: Jul  
4 weeks: Jul

#### English language entry requirements

From IELTS 5.0 or equivalent\*

#### Age requirement

17 years and above

#### Class hours

20 hours per week on average

\* Depending on course length and  
progression programme requirements.

# Affordable education at a world-class university

Save up to **£8,000** on your tuition fees with generous international scholarships at Queen's University Belfast.

At INTO Queen's University Belfast, we offer INTO Regional Office Scholarships of up to £4,000 to students who have achieved good grades. Then, when you progress to your degree at Queen's, you'll receive a guaranteed scholarship of £2,000-£3,000 towards your tuition fees – and an early commitment award to the value of £1,500 if you pay before the stipulated deadline.

As well as offering excellent scholarships to international students, Queen's is located in Belfast – one of the UK's most cost-effective cities for students.

Queen's University  
Belfast is ranked **2nd in  
the UK** for affordability

(International Student Barometer 2020/21)

Belfast has the  
**lowest student rent**  
in the UK

(NatWest Student Living Index 2020)



Visit our website for full details of  
our scholarships and how to apply:  
[www.intostudy.com/  
queens/scholarships](http://www.intostudy.com/queens/scholarships)

"Being awarded the Queen's 10-year Anniversary scholarship has greatly reduced the financial burden on my family, and has motivated me to work even harder. A degree from Queen's University Belfast is acknowledged worldwide, therefore it definitely makes the percentage of getting your desired job higher – along with the leadership skills, communication skills and cross-cultural awareness that are built by studying abroad."

Maegan, Malaysia  
LLB (Hons) Law, Queen's University Belfast  
Queen's 10-year Anniversary scholarship recipient





# Dates and prices

The cost of your programme may vary depending on factors including the pathway chosen and programme length. The following guide to costs is based on pricing for the current academic year and provides an indication of the cost of attendance for some of our pathways. For specific cost information, please refer online: [www.intostudy.com/queens/courses](http://www.intostudy.com/queens/courses)

Estimated cost of attendance based on prices for current academic year 2021-2022						
Study length	Tuition	Accommodation	Books and fees	Airport pick up †	Insurance	Total
<b>Academic programmes</b>						
<b>International Foundation (2 term)</b>	£14,415	£3,257-£3,322	£430-£830	£35-£50	£196	<b>£18,298-£18,763</b>
<b>International Foundation (3 term)</b>	£17,895-£18,460	£4,950-£5,967	£430-£830	£35-£50	£357	<b>£23,632-£25,614</b>
<b>International Foundation (4 term)</b>	£19,545-£20,095	£7,500-£7,956	£510-£910	£35-£50	£466	<b>£28,021-£29,427</b>
<b>International Year One (3 term)</b>	£17,895	£4,950-£5,967	£430-£940	£35-£50	£357	<b>£23,632-£25,159</b>
<b>Graduate Diploma (3 term)</b>	£17,895	£4,950-£5,967	£430	£35-£50	£357	<b>£23,632-£24,649</b>
<b>English language courses</b>						
<b>1 term*</b>	£4,585	£1,500-£1,836	£90	£35-£50	£122	<b>£6,297-£6,633</b>

Start months and term dates					
Academic programmes**		Academic English		Pre-session English	
<b>January (3 term)</b>	Mon 10 Jan 2022-Fri 26 Aug 2023	<b>January (1 term)</b>	Mon 10 Jan 2022-Fri 18 Mar 2022	<b>June (10 weeks)</b>	Mon 20 Jun 2022-Fri 26 Aug 2022
<b>March (2 term)</b>	Thu 31 Mar 2022-Fri 26 Aug 2022	<b>March (1 term)</b>	Mon 21 Mar 2022-Fri 10 Jun 2022	<b>July (6 weeks)</b>	Mon 18 Jul 2022-Fri 26 Aug 2022
<b>June (4 term)</b>	Mon 20 Jun 2022-Fri 16 Jun 2023	<b>June (1 term)</b>	Mon 20 Jun 2022-Fri 26 Aug 2022		
<b>September (4 term)</b>	Mon 19 Sep 2022-Fri 25 Aug 2023	<b>September (1 term)</b>	Mon 19 Sep 2022-Fri 09 Dec 2022		
<b>September (3 term)</b>	Mon 19 Sep 2022-Fri 16 Jun 2023	<b>January (1 term)</b>	Mon 09 Jan 2023-Fri 24 Mar 2023		
<b>January (3 term)</b>	Mon 09 Jan 2023-Fri 25 Aug 2023				


Please note the dates and prices shown are for the current academic year of 01 September 2021 - 31 August 2022 and are for indicative purposes only. All students who confirm their offer on or before 31 January 2022 will pay the 2021/2022 price as per their existing offer letter. After 31 January 2022, where tuition fees have increased or dates changed, students will receive a new offer letter detailing the new 2022/2023 pricing and dates. For full details of term dates, please visit the relevant course page at [www.intostudy.com/queens/courses](http://www.intostudy.com/queens/courses)

\* The price will depend on your start date and length of study. Prices shown are only for one term.

Vacation weeks in between terms are extra and will be charged at the weekly accommodation price.


\*\* The Centre also offer a 5-term programme that incorporates two terms of English language preparation. For dates and prices please visit our website.

† Please note airport pickup is optional and is not included in the total.




**Apply via your local INTO educational counsellor**

If you would like us to put you in contact with one of our counsellors, please contact us.



**Apply online**

Complete our online application form: [apply.intostudy.com](http://apply.intostudy.com)



**Need some help with your tuition fees?**

Check to see if you're eligible for a scholarship: [www.intostudy.com/queens/scholarships](http://www.intostudy.com/queens/scholarships)

## Discover more online

For students:

[www.intostudy.com/queens](http://www.intostudy.com/queens)

For education counsellors:

[partnerportal.intoglobal.com/queens](http://partnerportal.intoglobal.com/queens)

## Connect with us



## Contact us

Enquiries and applications:

[ukes@intoglobal.com](mailto:ukes@intoglobal.com)

or +44 1273 876040

Visit the Centre:

[into@qub.ac.uk](mailto:into@qub.ac.uk)

or +44 28 9097 6850

Centre address details:

INTO Queen's University Belfast

Queen's University Belfast

2-8 Lennoxvale

Belfast

BT9 5BY

Northern Ireland



Through innovative partnerships with leading universities, we expand opportunities for higher education, ensuring success and transforming the lives of our students and staff.

## INTO GIVING

Working across the globe, INTO Giving supports projects that increase access to education and improve the quality of teaching and learning. For more information visit [www.into-giving.com](http://www.into-giving.com)

Education counsellor's stamp



**QUEEN'S UNIVERSITY BELFAST**