



Build your... **EXPERTISE NETWORK CAREER**

GUIDE FOR INTERNATIONAL STUDENTS

2022-2023



WHY CHOOSE HOFSTRA UNIVERSITY?



#122

**Best Universities for
a Bachelor's Degree**
PayScale College Salary Report 2019

#144

**Research
Universities**
Forbes 2020

77%

**of Hofstra students who
graduated in 2019-2020 had
an internship while they were
Hofstra students, and many had
two or more**
Class of 2019-2020

FAST FACTS

Founded: **1935**
Campus: **Long Island, New York**
Campus Size: **244 acres**
Enrollment: **10,444 students**
International Students: **6%**
Countries Represented: **80**
Bachelor's: **165+**
Master's and PhD: **175+**

1 of only 3 schools

in the New York metropolitan area with
colleges of law, medicine and engineering

#160 National Universities

U.S. News & World Report 2021

13:1 Student-to-Faculty Ratio
**Average undergraduate
class size: 21**

Hofstra University is the only university to host three consecutive **US PRESIDENTIAL
DEBATES** in 2008, 2012 and 2016.

#92 Best Value Schools

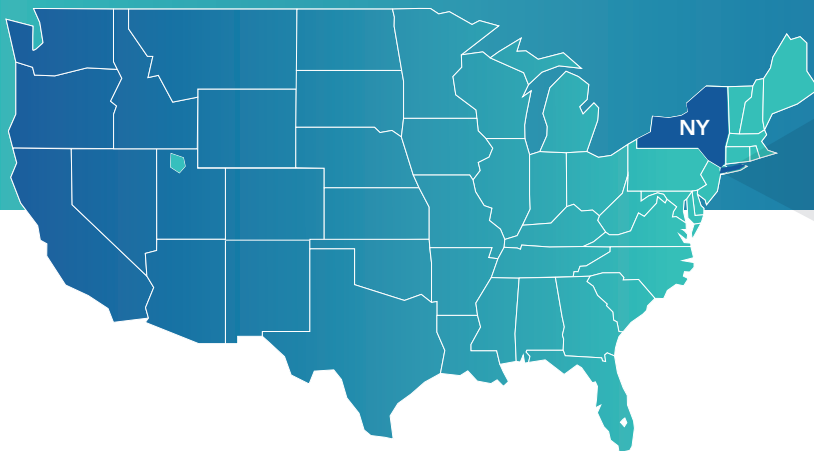
U.S. News & World Report 2021

33 ACCREDITATIONS



Campus Life. City Lights. Have it all at Hofstra.

- New York City is ranked the #1 Most Influential City in the World. *Kearney Global Cities Report 2020*
- The state of New York has the most Fortune 500 company headquarters in the United States.
- As the home of the United Nations and Wall Street, New York City is a powerful financial and geopolitical center.



20 minutes by car to
John F. Kennedy
International Airport

40 km to
New York City

45 minutes by train
or one hour by car
to New York City

PROGRAM RANKINGS



BUSINESS

#4

Top Ranked Finance and
Financial Management
in New York State
College Factual 2021



**COMMUNICATIONS
LIBERAL ARTS**

#13

Best College Radio
Station in the Nation
The Princeton Review 2021



ENGINEERING

#33

Best Undergraduate
Engineering Programs
(non-doctorate)
U.S. News & World Report 2021



#89

**BUSINESS
SCHOOLS**

Bloomberg Businessweek 2019-2020



Top 15

**BEST MUSIC
BUSINESS SCHOOLS**

Billboard Magazine 2020



MBA

Co-Op Program

Engineering

Co-Op Program

ABOUT HOFSTRA UNIVERSITY

Live the Campus Life

Programs Driven by Industry Needs

- Learn how to write compelling content from Emmy Award-winning communications faculty.
- Dive deep into the world of cybersecurity with the DeMatteis School of Engineering and Applied Science's Facebook connections.
- Take steps toward starting your own business by consulting entrepreneurs-in-residence or springboarding collaborations at the IdeaHUB.

Hofstra's faculty constantly collaborates with top executives in each industry to build strong programs and ensure that Hofstra students meet the employment market needs. Our programs are designed with industry-level standards in mind. The curriculum is updated often based on what's happening in your field, so you're learning the most up-to-date and important skills for your career goals. On top of that, our faculty have either held your dream job or have lucrative contacts to leaders in the field.

Preparing You for Your Career

- Interview alongside the reporters who cover on-campus events of national interest, like the US presidential debates in the last three election cycles.
- Get a feel for what your first job in engineering would be like with the Co-Op program where you will complete a paid six-month internship.
- Learn trading in one of the largest academic trading rooms in the nation, identical to those used by leading financial institutions.

Career preparation begins with practicing in the classroom what you will perfect in the boardroom. These experiences on your résumé are what will impress companies when you apply for jobs. By studying at Hofstra, you have the chance to go after Hofstra-exclusive learning opportunities and have an edge on the job market competition when you graduate.



Virtual Campus Tour

Take a campus tour from home with Hofstra's Virtual Tour at www.youvisit.com/hofstra



The INTO Hofstra Advantage

93% of all completed Pathway students were eligible to progress at Hofstra in 2019-2020. Eligible students are those who completed the Pathway program and qualified for admission as degree-seeking students. Enrolled students are those who enrolled as degree-seeking students in their next term of degree study at their host university.

Undergraduate and Graduate Progression 2019-2020

93%
PASSED

94%
ENROLLED

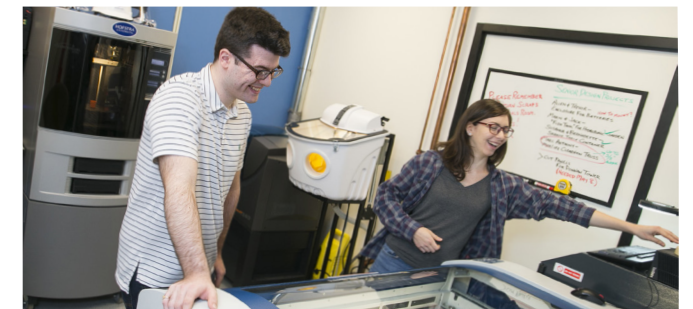
By living just outside New York City, you get to enjoy a relaxed neighborhood as your daily retreat, with the option to get your Big Apple fix in one hour or less. Instead of being in the New York City hustle and bustle, you can focus on your studies in a calm, welcoming and cozy atmosphere.

With more than 500 on-campus events per year and 21 NCAA Division I teams, there is plenty of entertainment on campus. You will be able to easily walk to classes and live in affordable on-campus housing while breathing in the fresh floral breeze.

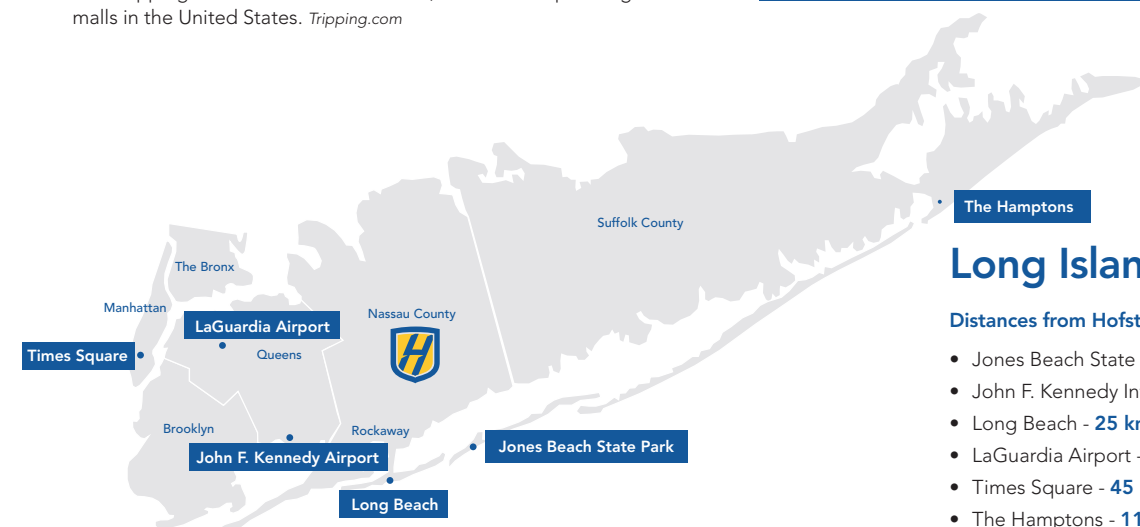
Hofstra's location puts you in a diverse, coastal community near spectacular beaches, historic landmarks and popular New York City boroughs like Brooklyn and Queens.

Things to Do on Long Island

- Enjoy the beaches from Long Beach to the glamorous Hamptons.
- The 300-year-old Sunken Forest on nearby Fire Island features an untouched forest and wide open beach.
- In the hometown of abstract artist Jackson Pollock, it's only fitting to visit museums like the Nassau County Museum of Art and the Parrish Art Museum in Water Mill.
- Eat freshly caught, local seafood on Shelter Island.
- Go shopping at the Roosevelt Field Mall, one of the top 10 largest malls in the United States. *Tripping.com*



F. Scott Fitzgerald's claim-to-fame novel, *The Great Gatsby*, is set on Long Island's Gold Coast.



Long Island, New York

Distances from Hofstra University

- Jones Beach State Park - **16 km**
- John F. Kennedy International Airport - **20 km**
- Long Beach - **25 km**
- LaGuardia Airport - **33 km**
- Times Square - **45 km**
- The Hamptons - **117 km**



EXPERIENCE THE CITY LIGHTS



Places to Go in New York City

- Take a walk through picturesque Central Park. It's a famous backdrop for many American movies with scenic trails, bike paths, a John Lennon memorial, concert venues and much more.
- See a show on Broadway, the global destination for musicals and plays. Countless comedy and live music hotspots can be found throughout the city.
- Visit the historic Statue of Liberty and learn about the history of Ellis Island.
- Go to the top of the Empire State Building and the rooftop deck of 30 Rock for epic views of the city.
- Channel your artistic side at MoMA (Museum of Modern Art) and The Met (The Metropolitan Museum of Art) in Manhattan.
- Watch a baseball game with the New York Yankees, a basketball game with the New York Knicks or a football game with the New York Jets or New York Giants.

Start Your Career in New York City

The state of New York has the most Fortune 500 company headquarters in the US (more than 50). You could start your career at one of the following headquarters:

- American Express
 - Estée Lauder
 - E*Trade Financial
 - Foot Locker
 - Goldman Sachs Group
 - Nasdaq
- Pfizer
 - Ralph Lauren
 - S&P Global
 - Tiffany & Co.
 - Viacom
 - Warner Bros. Records

Housing and Dining

On-Campus Housing

Program	REQUIRED (FIRST 2 SEMESTERS)	NOT REQUIRED
Academic English* (AE)	■	
AE + International Year One (IYO)	■	
IYO	■	
AE + Undergraduate Transfer Program (UTP)		■
UTP		■
Undergraduate Direct		■
AE + Graduate Pathway (GPW)		■
GPW		■
Graduate Direct		■

* Students 21 and older in Academic English are not required to live on campus.



Dining at Hofstra

- Students living on campus will receive a standard dining plan.
- Take your pick of 18 retail restaurant locations and a 24-hour dining service.

Transportation on Campus

- Campus Train Shuttle: The shuttle stops by the residence halls and the route covers over 10 stops on campus. It also goes to the train station that will take you to New York City.
- Shopping Shuttle: Shuttle available for students to go shopping on the weekends and includes a stop at Roosevelt Field Mall.
- Night Shuttle: From 10 PM to 5 AM, the shuttle runs through the surrounding neighborhoods and takes you to your residence hall.
- Free parking on campus for students.



Choose from the following room options:



Double Suite-Style
Shared Bathroom and Common Area



Super Single Suite-Style
Shared Bathroom



The Frank G. Zarb School of Business



"My experience at Hofstra and in this country couldn't be better! The MBA program gave me so much knowledge about business, especially in the finance and accounting fields which I never worked in before. I got my co-op internship at Zwanger-Pesiri Radiology as a marketer. Hofstra helped me with my CPT application. After three months of interning, the company offered me a full-time position. Now they are helping me with my OPT application. I appreciate all the talented individuals I have met through the co-op program. It has exposed me to different cultures which has molded my way of thinking."

Max, China
MBA in Marketing

Where You Will Learn

- The Leo A. Guthart Hall for Innovation and Discovery: The Frank G. Zarb School of Business boasts a 52,000-square-foot building.
- Behavioral Science and Market Research Lab: Study and research consumers' physical and physiological behavior with the latest technology to analyze their engagement process to a brand or a product.
- The Martin B. Greenberg Trading Room: One of the largest academic trading rooms in the nation, identical to those used by leading financial institutions and equipped with 34 Bloomberg Professional terminals.

Get to Work With America's Business Leaders

HOFSTRA-DIGITAL REMEDY VENTURE CHALLENGE

- Annual entrepreneurship competition gives students the opportunity to create and pitch their own business plan.
- Winners of the competition receive a cash prize to help implement their business plan, a space in a Manhattan office for the summer and a digital marketing package to launch their business.

IBM GLOBAL UNIVERSITY

- New alliance between the Zarb School of Business and IBM Global University enhances Hofstra's technology curriculum and provides training and certification in high-demand digital skills to students such as AI, Blockchain and decision sciences.
- First partnership of this kind with IBM in the state of New York.

MBA CO-OP PROGRAM

- Six-month paid co-op experience at leading corporations in New York City and on Long Island.

STUDENT MANAGED INVESTMENT FUND

- Students manage a portfolio of \$100,000 as a team while learning about the analysis and investment process of a fund.

Bring Your Ideas to Life

INSTITUTE OF INNOVATION AND ENTREPRENEURSHIP

- IdeaHUB: A business incubator where students can collaborate with startup companies.
- Entrepreneurs-in-Residence: Experienced entrepreneurs give aspiring students advice on the next steps to take toward starting their own business.
- Unispan Records: Student-run record label that gives students the chance to record, produce, promote and distribute music.

Real Tech Experience for the Real World

FACEBOOK'S CYBERSECURITY UNIVERSITY PROGRAM

- One of only nine US universities to have this program in collaboration with Facebook.
- Cybersecurity training coding academy: In conjunction with Facebook and CodePath.org, Hofstra offers a free, 12-week cybersecurity training coding academy.
- Scholarships for cybersecurity conferences: Facebook offers various scholarships to top students and invites them to attend conferences such as the annual Facebook Developer Conference in Silicon Valley.

ASPiRe (ADVANCED SUMMER PROGRAM IN RESEARCH)

- 10-week, intensive program for students interested in pursuing a research project related to their major.
- Work full-time during the summer on your research project with faculty or peer mentors and present your research at a symposium at the end of the summer. You might even present at professional conferences or publish your research in scholarly journals.

The Fred DeMatteis School of Engineering and Applied Science



CENTER FOR INNOVATION

- Companies consult the Center for Innovation at Hofstra when they need help solving a technical or practical engineering problem.
- As a student, you will join a group of experienced professionals, faculty and engineers to find an innovative solution for a company while gaining real-world experience.

ENTREPRENEURSHIP IN COMPUTING

- The Leadership and Innovation concentration is available to computer science students.
- You will learn to identify innovative and entrepreneurial opportunities in computing and how to move from an idea to a product to a small company.
- As part of this course, you will have a 10- to 13-week internship with a local startup company. You will be mentored by entrepreneurs in all aspects of working, managing and organizing a startup.

CO-OP PROGRAM

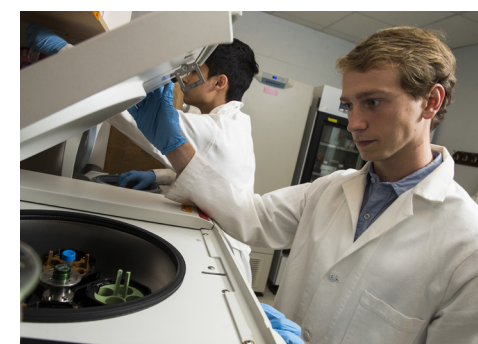
- Undergraduate engineering and computer science students can begin the program after the first semester of their junior year. The program is also available for graduate-level computer science students.
- Complete a six- to eight-month paid internship at industry-leading corporations in New York City, on Long Island or nationwide.
- Over 150 corporate partners, including Black Knight, Canon, Estée Lauder, Gerber Technology, Google, GroupM, IBM, JFK Airport, Lockheed Martin, Medtronic, Nomura, Stantec, UPS, Veeco and Zebra.
- More than 80% of the students who have graduated from the program have received job offers from their co-op companies.



100%

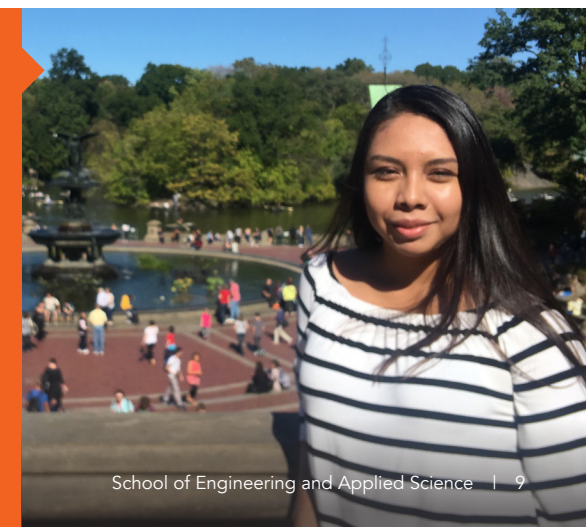
of computer science graduates accepted a job offer within six months

Based on 2018-2019 Hofstra University undergraduate degree recipients who responded to a survey or other reliable sources within a year of graduating (61% knowledge rate).



"Through Hofstra, I was able to be part of this year's co-op program as a Data Engineering intern at InterDigital Inc. in New York City. What I like about the co-op program is that it opens up job opportunities that are not necessarily available to everyone. I think the relationship between Hofstra's Fred DeMatteis School of Engineering and Applied Science and companies allows companies to trust that students will perform well at their job. Working as an intern at InterDigital not only allowed me to get hands-on experience in my field of interest, but I also learned new skills while on the job. It has been an invaluable experience."

Gianna, Peru
MS in Computer Science



The Lawrence Herbert School of Communication



Television and Film

- Our television faculty helped found major networks like Telemundo and have been presidents of prime time news organizations like Fox News.
- You will learn the fundamentals of television from experts who have contributed to several award-winning shows, including *Good Morning America*, The Olympics, NFL, Super Bowl, NHL, Baseball World Series and *Jimmy Kimmel Live*.
- Our film faculty have been directors, producers, stage managers, writers and more. Not only that, but our professors have won Emmy, Franklin J. Schaffner Achievement and George Polk awards.

Get Writing, Broadcasting and Filming Experience Before You Graduate

- All students are required to work with the Center for Career Design and Development to complete three credits of an internship (or 180 hours) to graduate.
- Third- and fourth-year students in the Department of Radio, Television, Film can participate in an internship and will earn up to six credits.



News and Media

If becoming a serious journalist is your ambition, you've come to the right place. Our journalism faculty have held the following influential roles in media:

- Contributors for the most prestigious news organizations like *Al Jazeera*, *Bloomberg*, *CNN*, *Columbia Journalism Review*, *Fortune*, *Harvard Business Review*, *HuffPost*, *The New York Times*, *Newsday*, *The Atlantic* and *The Washington Post*.
- Head of communications for the United Nations Secretary-General's High Level Panel on the Post-2015 Development Agenda.
- Spokesperson appointed by President Obama for international affairs in the US Treasury Department.
- Spokesperson for New York City economic development initiatives during the administration of Mayor Michael R. Bloomberg.
- On-air commentator providing analysis of media, social justice issues, and politics for NPR, CNN, BET, Fox, TV-One, MTV and MSNBC.

"Professionally, working on Hofstra Votes Live (election coverage) was definitely an unforgettable experience. I was the main camera operator in the WRHU mixing studio. I learned so much from that night; teamwork is so important in television production. Being a Herbert School student is definitely the best decision in my college life."

Hao, China
BA in Film Studies and Production



Mark Lukasiewicz
Dean of The Lawrence Herbert
School of Communication

Emmy award-winning NBC News executive helped pioneer the network's multi-platform storytelling and produced live coverage of major news events, including four presidential elections and 10 presidential debates.



Lawrence Herbert, Hofstra alum, became **CEO of Pantone Inc.**, and invented the world-renowned Pantone Matching System, a global standard for the communication of colors.

PMS 661

"I decided to study at Hofstra University because I wanted to study healthcare administration and the US healthcare system is more advanced than the system in India. In my program, I've developed a lot of leadership skills. My professors give group projects and presentations throughout the school year where students take turns being the leader of the group. This experience provided me with the opportunity to gain interpersonal and communication skills. My program also hosts events where they invite current healthcare professionals to speak to students about the industry. These events are great opportunities for us to network with and learn from some of the most influential people in the industry."

Khyati, India
Master of Health Administration

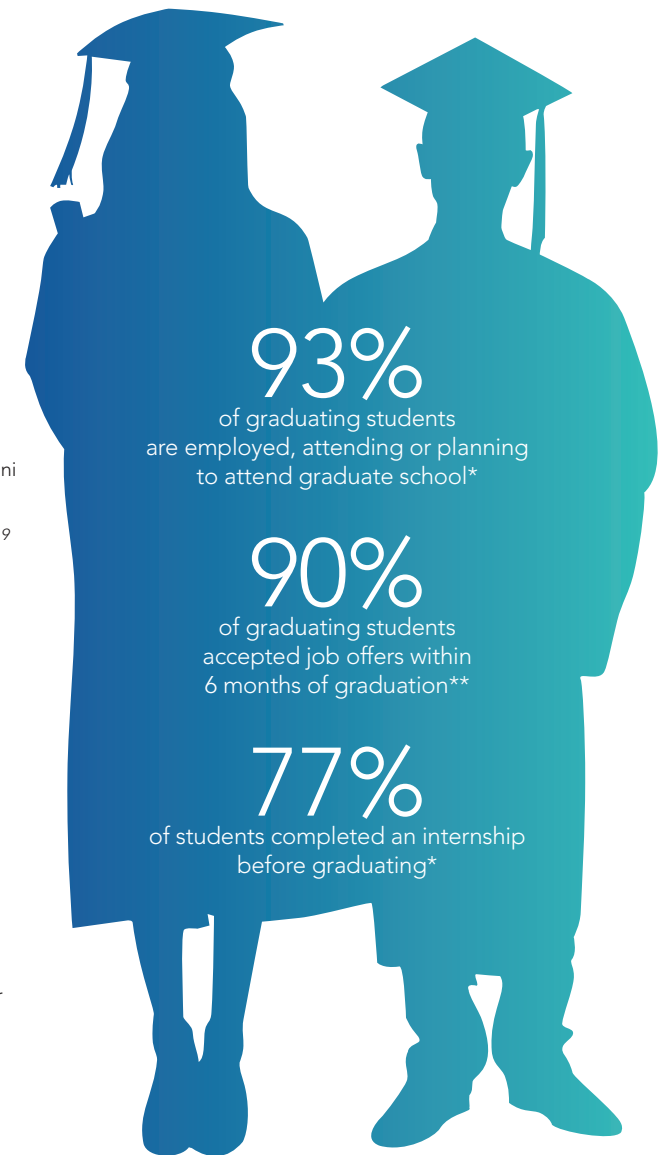


Invest in Your Future

- 59% accepted job offers before graduation *Hofstra Data 2018-2019*
- Top 8% of colleges and universities nationwide for mid-career salary for alumni with only a bachelor's degree *PayScale College Salary Report 2019-2020*
- Top 13% nationwide for return on investment *PayScale College ROI Report 2018-2019*
- Top 80 private colleges and universities nationwide for mid-career salary of graduates with a bachelor's degree *PayScale College Salary Report 2018-2019*

Some of Hofstra's Famous Alumni:

- Frank G. Zarb: former Chairman and CEO of the National Association of Securities Dealers (NASD) and former head of the Nasdaq
- Ralph S. Larsen: former CEO of Johnson & Johnson
- Avi Arad: former President-CEO of Marvel Studios and producer of *Spider-Man* (2002), *Iron Man* (2008) and *Spider-Man: Into the Spider-Verse* (2018)
- Francis Ford Coppola: world-renowned director, producer and screenwriter. His most famous work: *The Godfather* film series
- Debra Ann Sandler: former President of M&M Mars Chocolate.
- Tracy Perlman: Senior Vice President of Communications and Marketing for the National Football League (NFL)



**Based on 2018-2019 Hofstra University undergraduate degree recipients who responded to a survey or other reliable sources within a year of graduating.

*Based on 2018-2019 Hofstra University undergraduate degree recipients who responded to a survey or other reliable sources within a year of graduating (84% knowledge rate).

Hofstra students have interned at the following companies:

- ABC
- CBS
- Doctors Without Borders
- Goldman Sachs
- JPMorgan Chase & Co.
- KPMG
- MTV/Viacom
- NASA
- NBC
- PwC
- Sony
- Toyota
- Vogue Magazine
- The Walt Disney Company

Employers of Hofstra Alumni

- ABC News
- ADP
- Amazon
- Boeing
- Capital One
- CBS
- Credit Suisse
- ESPN
- Estée Lauder
- EY
- Facebook
- HSBC Bank
- IBM Corp
- JPMorgan Chase & Co.
- *The Late Show with Stephen Colbert*
- Live Nation
- Marvel Entertainment
- Mercer
- Morgan Stanley
- NBC
- Nike
- PwC
- Skanska
- State Farm Insurance
- T-Mobile
- Time Inc.
- United Nations
- Viacom
- Warner Bros. Records
- Wells Fargo
- Yelp

School of Health Professions and Human Services



A Career in Medicine

The field of medicine is diverse and offers many more options beyond medical school.

- Master of Health Administration: Develop and strengthen your communication and leadership skills to manage health services effectively and maximize the health status of diverse populations.
- Public Health: Conduct scientific research or promote and protect the health of the community through education.
- Health Informatics: Develop information systems to manage patient healthcare information or help doctors create treatment plans.

Northwell Partnership

- Hofstra University has partnered with Northwell Health, New York state's largest health care provider and private employer, to establish and operate the Donald and Barbara Zucker School of Medicine at Hofstra/Northwell.
- This dynamic collaboration has transformed medical education through the creation of an innovative curriculum that integrates academic course content with hands-on clinical experiences. It is a new approach to learning that combines biomedical, biopsychosocial and clinical medicine needed to tackle tomorrow's healthcare issues.

ACADEMIC PROGRAMS

FIND YOUR DEGREE. With a wide range of subject areas and admissions options, you can find the perfect degree for your chosen career. You can choose to apply for direct entry to the university or for a Pathway program that provides extra academic, language and cultural support. From the day you apply to the day you graduate, we are here to help you succeed every step of the way. Flip to the back cover to learn how to apply.

B = Bachelor's

M = Master's

GP = Graduate Pathway program that can lead to this degree is indicated in orange. This degree is also available through direct admission.

International Year One

Indicates the International Year One program that should be taken to progress to an undergraduate academic program. This program is also available through direct admission.

● This Hofstra University degree program is available through direct entry.

► Designated STEM degree by the U.S. Department of Homeland Security.

¹ STEM is not available for all concentrations

* Dual Bachelor's/Master's available

BU Business

CO Communication

CS Computer Science

EN Engineering

GE General

HE Health Science/ Exercise Science

NS Natural Science

	B	M
Hofstra College of Liberal Arts and Sciences		
Africana Studies	GE	
Anthropology [BA options: Anthropology; Archaeology]	GE	
► Applied Physics [BS options: Biochemistry; Computer Science; Engineering]	GE	
Art History	GE	
Asian Studies	GE	
► Biochemistry	NS	
► Biology [BA/BS options: Cell and Molecular Biology; Ecology and Evolution; Marine Biology; Pre-Medical, Pre-Dental and Pre-Veterinary Studies; Secondary Education] [MA/MS options: Marine and Freshwater Biology; Cell and Molecular Biology]	NS	GP
Business Economics	GE	
Business Education		●
► Chemistry	NS	
Chinese	GE	
Chinese Studies	GE	
Classics [BA options: Classical Civilizations; Classical Languages and Literatures]	GE	
Comparative Literature and Languages	GE	
Criminology	GE	
Curriculum Studies		●
Dance	FP	
Drama	FP	
Early Childhood and Childhood Education	GE	●
► Economics* [BS options: Business Economics; Mathematical Business Economics] [BA options: Economics; Mathematical Economics] ²	GE	
Educational Leadership and Policy Studies (K-12)		●
English [BA options: English; Children's and Young Adult Literature; Creative Writing and Literature; Literatures in English; Publishing Studies and Literature]	GE	
English Education		●
► Environmental Resources	NS	
Family and Consumer Sciences		●
Fine Arts [BA/BS options: Ceramics; Design; Painting; Photography; Sculpture-Industrial Design]	FP	
Fine Arts Education		●
Foreign Language Education [MS options: Arabic, Chinese, French, German, Italian, Mandarin, Russian, Spanish]		●
► Forensic Science	GE	

	B	M
French	GE	
► Geography [BA options: Geography; Geographic Information Systems] [BS option: Geographic Information Systems] ¹	GE	
► Geology	NS	
German	GE	
Global Studies	GE	
Health Education		●
Higher Education Leadership and Policy Studies		GP
History	GE	
► Industrial/Organizational Psychology		●
Italian	GE	
Japanese	GE	
Japanese Studies	GE	
Jewish Studies	GE	
Labor Studies*	GE	
Languages Other Than English and TESOL		GP
Latin	GE	
Latin American and Caribbean Studies	GE	
► Linguistics* ¹ [MA option: Linguistics: Forensic Linguistics]	GE	●
Literacy Studies [MA options: Literacy Studies (Birth-Grade 6) or (Grades 5-12)]		GP
► Mathematical Finance	GE	
► Mathematics* [BS options: Computer Science and Mathematics (Dual); Mathematics; Actuarial Science; Applied Mathematics; Chemistry; Engineering; Physics] [BA option: Mathematics]	GE	
Mathematics Education with STEM Integration		●
► Medical Physics		●
Music [BA option: Music] [BS options: History/Literature; Jazz and Commercial Music; Music Business; Performance; Theory/Composition]	FP	
Music Education (MSEd Only)		●
► Neuroscience	NS	
Philosophy	GE	
Physical Education	HE	●
► Physics [BS options: Applied Physics - Biochemistry; Applied Physics - Computer Science; Applied Physics - Engineering; Physics] [BA option: Physics]	NS	
Political Science	GE	
Pre-Health (Pre-Medical Science) [BA options: Anthropology; Classics; Creative Writing; Disability Studies; English and American Literature; Geography; Global Studies; Music; Philosophy; Religion; Speech-Language Hearing Sciences]	NS	

	B	M
Pre-Medical Studies	NS	
Psychology*	GE	
Public Policy and Public Service	GE	
Religion	GE	
Rhetoric and Public Advocacy [BA options: Political Communication; Speech Communication]	GE	
Russian	GE	
Secondary Education [BSEd options: Dance Education; Fine Arts Education; Music Education] [BA options: English Education; French; German; Italian; Russian; Spanish; Mathematics; Biology; Chemistry; Earth Science; Physics; Social Studies] [MSEd options: English; Mathematics; Biology; Chemistry; Earth Science; Physics; Social Studies]	GE	●
Secondary Special Education [MSEd options: Secondary Special Education Generalist; Students with Disabilities Generalist with Extensions in Secondary Education]		●
Sociology	GE	
Spanish	GE	
Special Education and Early Childhood (birth-grade 2) Education (Inclusive)		●
Special Education and Elementary (grades 1-6) Education (Inclusive)		●
Special Education and Secondary (grades 7-12) Education (Inclusive)		●
STEM	GE	
► Sustainability		GP
► Sustainability Studies	GE	
Theater Arts	FP	
► Urban Ecology ¹	NS	GP
Women's Studies	GE	

School of Health Professions & Human Services		
Community Health [BS options: Community Health; Nutrition Science]	HE	
Counseling		●
Creative Arts Therapy Counseling		GP
Exercise Science	HE	
Health Administration		GP
► Health Informatics		GP
Health Professions Pedagogy and Leadership		●
Health Science	HE	
Marriage and Family Therapy		●
Mental Health Counseling		●
Public Health		GP
Rehabilitation Counseling		●
Rehabilitation Counseling in Mental Health		●
Speech-Language-Hearing Sciences		●
Sports Science [MS option: Exercise Physiology]		GP

Frank G. Zarb School of Business		
► Accounting * ¹	BU	GP
► Business Administration/MBA [MBA Options: Accounting; Business Analytics; Business Operations and Healthcare Analytics; Cybersecurity Management and Policy, Finance; Health Services Management; Information Systems; International Business; Management; Marketing; Professional Accountancy; Sports & Entertainment Management]		GP
► Business Analytics	BU	GP
► Business Operations and Healthcare Analytics		GP
Entrepreneurship*	BU	
► Finance * ¹ [MS options: Financial and Risk Management; Investment Analysis]	BU	GP
► Health Services Management		GP
► Information Systems *	BU	GP
► International Business* ¹	BU	GP

	B	M
Legal Studies in Business*	BU	
► Management* ¹	BU	GP
► Marketing * ¹	BU	GP
► Professional Accountancy		GP
► Sports and Entertainment Management		●
Supply Chain Management*	BU	

The Lawrence Herbert School of Communication		
Audio/Radio Production and Studies	CO	
Film Studies and Production	CO	
Filmmaking	CO	
Journalism* ³ [BA options: Journalism; Sports Media]	CO	●
Mass Media Studies [BA options: Media and Culture; Media, Law, and Policy; Urban and Suburban Communication]	CO	
Public Relations ³	CO	GP
Television Production and Studies	CO	
Video/Television	CO	
Video/Television and Business	CO	
Video/Television and Film	CO	
Writing for the Screen	CO	

Fred DeMatteis School of Engineering & Applied Science		
► Bioengineering [BS options: Bioengineering; Bioelectricity; Biomechanics; Pre-medicine]	EN	
► Civil Engineering	EN	
► Computer Engineering [BS options: Artificial Intelligence; Computer Engineering; Gaming and Graphics; Leadership and Innovation in Computing; Medical Engineering; Networking and Cybersecurity; Web and Mobile Engineering]	EN	
► Computer Science * [BA/BS options: Artificial Intelligence; Computer Science; Gaming and Graphics; Leadership and Innovation in Computing; Networking and Cybersecurity; Web and Mobile Engineering] [BS option: Computer Science and Mathematics (Dual)]	CS	GP
► Cybersecurity ² [MS/MBA options: Management and Policy; Technology]		GP
► Data Science		GP
► Electrical Engineering [BS options: Electrical Engineering; Computer Engineering]	EN	
► Engineering ¹ [BS options: Applied Physics - Engineering; Bioengineering; Bioengineering - Bioelectricity; Bioengineering - Biomechanics; Bioengineering - Pre-medicine; Civil Engineering; Electrical Engineering; Electrical Engineering - Computer Engineering; Industrial Engineering; Mechanical Engineering; Mechanical Engineering - Aerospace Engineering] [BA options: Biomedical Engineering Science; Production and Manufacturing Engineering Science] [BE options: Biomedical Engineering Science; Civil Engineering Science]	EN	
► Engineering Management		GP
► Engineering Science [BA options: Biomedical Engineering; Production and Manufacturing] [BE options: Biomedical Engineering; Biomechanics, Bioelectricity, Pre-medicine; Civil Engineering; Structural, Environmental]	EN	
► Industrial Engineering	EN	
► Mechanical Engineering [BS options: Aerospace Engineering; Mechanical Engineering]	EN	

Maurice A. Deane School of Law		
American Legal Studies [LLM options: Business Law, International Law]		●
Family Law		●
Health Law		●

² Programs require an EQUIS or AACSB-accredited undergraduate degree.
³ Graduate programs require a TOEFL 90 or IELTS 7.0.

UNDERGRADUATE ADMISSIONS

We offer several routes to admission. With approximately 165 bachelor's degrees, flexible study plans and start dates throughout the year, we will help you find the option that's right for you.

There's no need to stress about where you start; just focus on where you're going. You can complete your degree at any stage. We don't design our programs for one type of student; our programs are built for every kind of student. Where you will begin depends on your grades and English level. Where you end up is where you want to be: graduating with a bachelor's degree from Hofstra.

→ **DIRECT ENTRY:** If you meet the academic and English language requirements for your degree program, you can apply directly to Hofstra University.

To apply, you will need the following required documents: declarations, high school transcripts, university transcripts (for transfer applicants), proof of degree, personal statement, a letter of recommendation, accounting of time, passport, English test score and proof of enrollment (transfer student only). An application fee may apply. For more information, visit www.hofstra.edu/admission/adm_international_main.html

→ **INTERNATIONAL YEAR ONE:** International Year One allows you to begin earning credits toward your degree even if you do not meet the academic and English requirements for direct entry. You will receive additional academic, English language and cultural support to help you successfully complete your first year and graduate in the same amount of time as direct entry students. For more information, visit www.intostudy.com/hofstra/programs

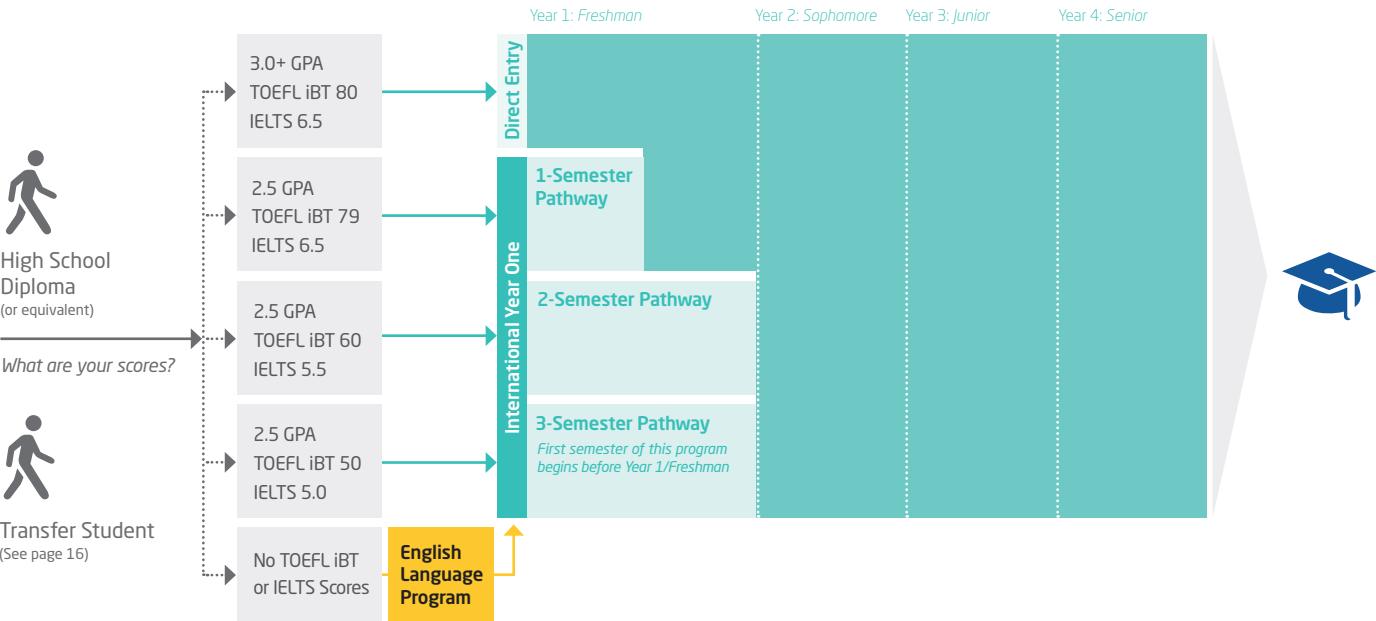
Entry Requirements				
PROGRAM	DIRECT*1	INTERNATIONAL YEAR ONE*		
		1-SEMESTER	2-SEMESTER	3-SEMESTER
Program requirements*	• High school diploma • Additional materials may also be required	High school diploma		
Minimum GPA Equivalent	3.0	2.5	2.5	2.5
TOEFL iBT	80	79	60	50
IELTS	6.5	6.5	5.5	5.0
IELA	NA	176	162	154
Duolingo	NA	120	90	75
Academic English	Level 6	N/A	N/A	Level 4

Notes: Entry requirements are subject to change and vary by program.
*All Direct Entry and International Year One students are required to take an English Language Placement test and a Math Placement test during Orientation.
1SAT/ACT not required for admission. Minimum score required for scholarship consideration SAT 1150/ACT 23.
Institutional Code TOEFL: 2295 SAT: 2295 ACT: 2760

Dates	Direct	International Year One
Start Dates	Fall 2022: Aug 2022 Spring 2023: Jan 2023	Fall 2022: Aug 2022 Spring 2023: Jan 2023

→ **ENGLISH LANGUAGE PROGRAM:** If you do not meet the direct or International Year One entry language requirements, you can enter our Academic English program to improve your academic and language skills. Once you have achieved the required language level, you can progress to International Year One. Learn more on page 21.

Undergraduate Degree Program



International Year One Programs

*Estimated credits remaining after Pathway/Total credit hours needed to complete degree.

Semester(s)	Start Dates		Credits	Entry Requirements: High School Diploma					Progression Requirements	
	Fall	Spring		GPA	TOEFL iBT	IELTS	IELA	Duolingo	GPA	Other
Business										
3-Semester	•	•	86/120	2.5	50	5.0	154	75	2.5	• No grades below C • No I or W/UW grades
2-Semester	•	•	89/120		60	5.5	162	90		
1-Semester	•	•	105/120		79	6.5	176	120		
Communication										
3-Semester	•	•	90-91/124	2.5	50	5.0	154	75	2.5	• No grades below C • No I or W/UW grades
2-Semester	•	•	93-94/124		60	5.5	162	90		
1-Semester	•	•	109/124		79	6.5	176	120		
Computer Science										
3-Semester	•	•	88/124	2.5	50	5.0	154	75	2.5	• No grades below C • No I or W/UW grades
2-Semester	•	•	91/124		60	5.5	162	90		
1-Semester	•	•	108/124		79	6.5	176	120		
Engineering										
3-Semester	•	•	93-98/128-133	2.5	50	5.0	154	75	2.5	• No grades below C • No I or W/UW grades
2-Semester	•	•	96-101/128-133		60	5.5	162	90		
1-Semester	•	•	112-117/128-133		79	6.5	176	120		
Fine and Performing Arts										
3-Semester	•	•	91/124	2.5	50	5.0	154	75	2.5	• No grades below C • No I or W/UW grades
2-Semester	•	•	94/124		60	5.5	162	90		
1-Semester	•	•	109/124		79	6.5	176	120		
General										
3-Semester	•	•	91/124	2.5	50	5.0	154	75	2.5	• No grades below C • No I or W/UW grades
2-Semester	•	•	94/124		60	5.5	162	90		
1-Semester	•	•	109/124		79	6.5	176	120		
Health Science/Exercise Science										
3-Semester	•	•	92/127	2.5	50	5.0	154	75	2.5	• No grades below C • No I or W/UW grades
2-Semester	•	•	95/127		60	5.5	162	90		
1-Semester	•	•	111/127		79	6.5	176	120		
Natural Science										
3-Semester	•	•	88/124	2.5	50	5.0	154	75	2.5	• No grades below C • No I or W/UW grades
2-Semester	•	•	91/124		60	5.5	162	90		
1-Semester	•	•	107/124		79	6.5	176	120		

Entry and progression requirements are subject to change and may vary by program.

[SAMPLE GRID INTERNATIONAL YEAR ONE] Business				
2-Semester Pathway Fall: August 2022 Spring: January 2023	Degree Program Components			Program Information
	120 credit hour program 31 credit hours apply from Pathway 89 credit hours remaining toward degree			
Entry Requirements	Semester 1	Course Title	Credit Hours	Progression Requirements
	ESL 105	Advanced Reading, Writing and Grammar I	3	• Minimum 2.5 GPA • No grades below C • No I or W/UW grades
• High school diploma • 2.5 minimum GPA on 4.0 scale • Language requirement: • TOEFL 60 • IELTS 5.5 • Duolingo 90 • IELA 162 • Password 6 • Completion of AE Level 4	ESL 106	Advanced Listening, Viewing and Speaking I	3	Notes Study plan is subject to change per student's specific program. Math placement will be dictated by a placement test that is administered after arrival during orientation.
	BBA 100	Business and Society: Foundations for Professional Development	3	
	MATH 040	Linear Mathematics and Matrices	3	These courses are generally delivered through the INTO Hofstra Center and are for Pathway students only.
	FA 014	Drawing and Perception I	3	
	Total		15	
1-Semester Pathway Fall: August 2022 Spring: January 2023	Semester 2	Course Title	Credit Hours	
	ESL 111	Advanced Reading, Writing and Grammar II	3	
	ESL 112	Advanced Listening, Viewing and Speaking II	3	
	IT 014	Introduction to Computer Concepts and Software Tools in Business	4	
	ENTR 115	Introduction to Global Entrepreneurship	3	
	BAN 001	Business Statistics	3	
	Total		16	
Entry Requirements	Semester 1	Course Title	Credit Hours	
	ESL 111	Advanced Reading, Writing and Grammar II	3	
• High school diploma • 2.5 minimum GPA on 4.0 scale • Language requirement: • TOEFL 79 • IELTS 6.5 • Duolingo 120 • IELA 176 • Password 8	ESL 112	Advanced Listening, Viewing and Speaking II	3	
	BBA 100	Business and Society: Foundations for Professional Development	3	
	MATH 040	Linear Mathematics and Matrices	3	
	FA 014	Drawing and Perception I	3	
	Total		15	

www.hofstra.edu/academics/colleges/zarb/zarb_undergrad.html



US UNDERGRADUATE EDUCATION SYSTEM

To graduate with your 4-year undergraduate degree, you will need to take the following classes:

Core classes: General education courses can include English composition, social sciences, humanities, history, mathematics and natural/physical science. These are typically taken at the beginning of your degree.

Major classes: These classes will be about the specific field of study you chose. They are typically taken toward the last part of your degree.



UNDERGRADUATE TRANSFER PROGRAM

Have you earned credits from another college or university and want to transfer to a US university? You can transfer directly into Hofstra University or choose our Undergraduate Transfer Program (UTP) which is specifically designed to support international students through the process of transferring.

Entry Requirements		
PROGRAM	DIRECT TRANSFER	UNDERGRADUATE TRANSFER PROGRAM
Program length	N/A	1-Semester 2-Semester
Start Dates	Fall: Aug 2022 Spring: Jan 2023	Fall: Aug 2022 Spring: Jan 2023
GPA	2.5	2.5
TOEFL iBT	80	60-79
IELTS	6.5	5.5-6.5
IELA	N/A	162-176
Duolingo	N/A	1-Semester: 120 2-Semester: 90
Minimum Transfer Credits	24	24
Maximum Transfer Credits	Community colleges or 2-year institutions: 64 (Business: 65/Engineering: 69) Accredited Universities: No limit	Community colleges or 2-year institutions: 64 (Business: 65/Engineering: 69) Accredited Universities: No limit

Entry requirements are subject to change and vary by program.



Why Choose UTP?

Choosing UTP provides a customized, cost-effective path to your bachelor's degree. Before your program starts, Hofstra will provide you with an estimate of credits that transfer to the university. Once you arrive on campus, our friendly staff will be available to help you transition into life at Hofstra University. You will also have access to helpful resources including academic, English language and cultural support. If you do not meet the English language entry requirements for the UTP, you can enter our Academic English program before progressing to either the UTP or direct transfer to Hofstra.

Undergraduate Transfer Program Benefits

- Transfer of credits from your college or university-level classes to your degree
- Receive customized curriculum of university credit-bearing courses
- Quick turnaround time for offer (5-7 business days)
- Unofficial Pre-arrival Credit Evaluation (1.5 additional business days after receiving offer letter)
- Progression to an undergraduate program upon successful completion of your UTP
- Academic advising throughout the program with progression and student success advisors

Undergraduate Transfer Program Start Dates

PROGRAM	Fall: Aug 2022	Spring: Jan 2023
Business	⦿	⦿
Communication	⦿	⦿
Computer Science	⦿	⦿
Engineering	⦿	⦿
Fine and Performing Arts	⦿	⦿
General	⦿	⦿
Health Science/ Exercise Science	⦿	⦿
Natural Science	⦿	⦿

⦿ 1-Semester program

⦿ 2-Semester program

GRADUATE ADMISSIONS

Hofstra is home to approximately 175 graduate programs. Our programs are designed to help you combine your passion, strength and skills into a successful career. There are multiple ways you can begin your graduate-level studies.

How you start your program depends on your academic profile and your English level. How you finish your program is exactly how you pictured: graduating with a master's degree from Hofstra.

→ **Direct Entry:** If you meet the academic and English language requirements for your degree program, you can apply directly to Hofstra University.

To apply, you may need the following required documents: declarations, university transcripts, proof of degree, personal statement, letters of recommendation, accounting of time, passport and English test score. An application fee may apply. GRE or GMAT scores may also be required.

Graduate degrees are competitive, and an extensive review of your application will be done. Please expect a longer turnaround for an admissions decision. For more information, visit www.hofstra.edu/admission/adm_international_main.html

→ **Graduate Pathway:** Our Graduate Pathways allow you to begin earning credits toward your degree even if you do not meet the academic and English requirements for direct entry. The program will help build the academic foundation and essential English language skills you need to successfully progress to your master's degree. For more information, visit www.intostudy.com/hofstra/programs

→ **English Language Program:** If you do not meet the direct or Graduate Pathway program entry language requirements, you can enter our Academic English program to improve your academic and language skills. Once you have achieved the required language level, you can progress to a Graduate Pathway program. Learn more on page 21.

[SAMPLE GRADUATE PATHWAY PROGRAM] Graduate Pathway in MBA

2-Semester Pathway Fall: August 2022 Spring: January 2023	Degree Program Components 36 credit hour program 12 credit hours apply from Pathway 24 credit hours remaining toward degree			Program Information	
Entry Requirements <ul style="list-style-type: none">• Minimum GPA of 2.5• Bachelor's degree or equivalent Language requirement: <ul style="list-style-type: none">• TOEFL 65• IELTS 5.5• Duolingo 95• IELA 169	Semester 1	Course Title	Credit Hours	Progression Requirements <ul style="list-style-type: none">• Minimum 3.0 GPA• No grades below B-• No I or W/UW grades• GMAT waived for students who progress with a GPA of 3.5 in their degree classes. Students with a GPA of 3.0-3.49 will take the GMAT in the semester after progression and submit a score of 470. Notes <p>Students without a previous course in statistics will be required to take an undergraduate statistics class or statistics workshop during their first semester.</p> <p>Students interested in CPA certification may elect to pursue the Professional Accountancy option after progression and in consultation with their graduate advisor. The Professional Accountancy option is 69 credits.</p> <p>*These courses are generally delivered through the INTO Centre and are for Pathway students only.</p>	
	ESL 105	Advanced Reading, Writing and Grammar I	3		
	ESL 106	Advanced Listening, Viewing and Speaking I	3		
	IT 203	Information Systems for Managers	3		
	Total				9
	Semester 2	Course Title	Credit Hours		
	ESL 111	Advanced Reading, Writing and Grammar II	3		
	ESL 112	Advanced Listening, Viewing and Speaking II	3		
	ACCT 203	Accounting and Financial Reporting	3		
	BAN 203	Advanced Quantitative Analysis for Managers	3		
	Total				12
1-Semester Pathway Fall: August 2022 Spring: January 2023	Degree Program Components 36 credit hour program 12 credit hours apply from Pathway 27 credit hours remaining toward degree				
Entry Requirements <ul style="list-style-type: none">• Minimum GPA of 2.5• Bachelor's degree or equivalent Language requirement: <ul style="list-style-type: none">• TOEFL 79• IELTS 6.5• Duolingo 120• IELA 176	Semester 1	Course Title	Credit Hours		
	ESL 111	Advanced Reading, Writing and Grammar II	3		
	ESL 112	Advanced Listening, Viewing and Speaking II	3		
	IT 203	Information Systems for Managers	3		
	ACCT 203	Accounting and Financial Reporting	3		
	MGT 203	Operations and Supply Chain Management	3		
	BAN 203	Advanced Quantitative Analysis for Managers	3		
	Total			15	

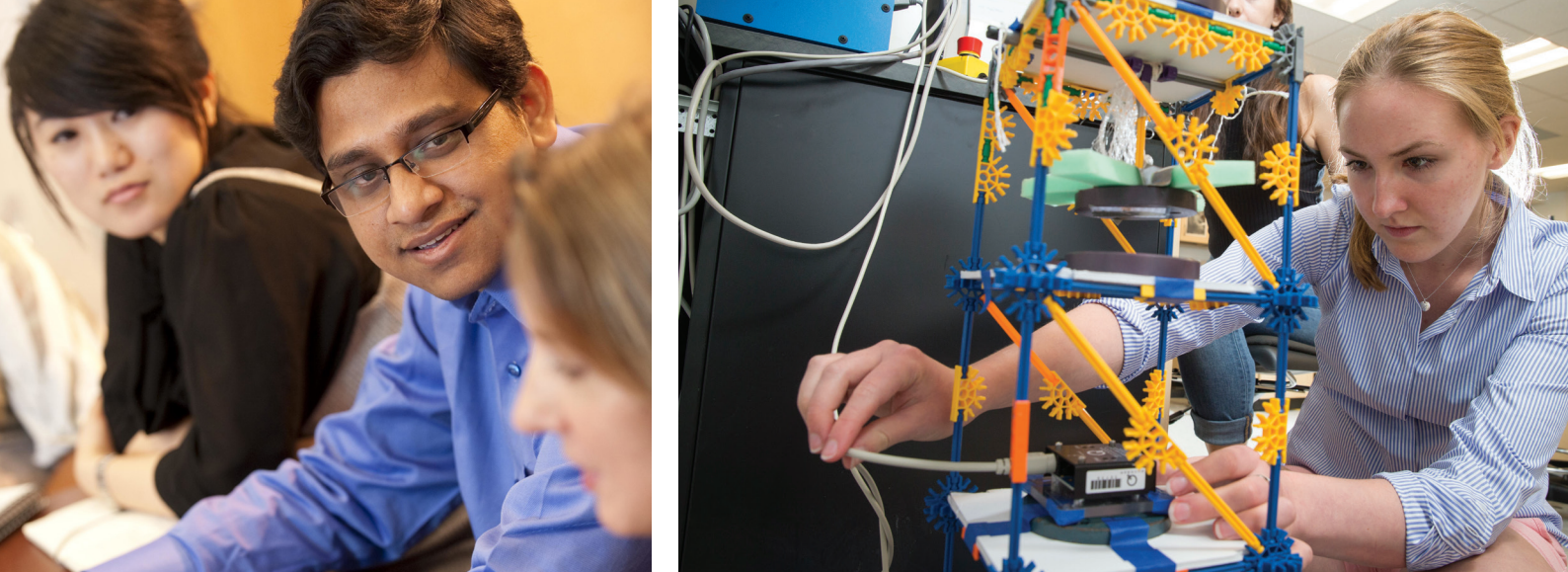
www.hofstra.edu/management-entrepreneurship/mba-management.html

Graduate Pathway Programs

* Estimated credits remaining after Pathway/Total credit hours needed to complete degree.

Semester	Start Dates		Credits*	Entry Requirements				Progression Requirements				
	Fall	Spring		GPA	Bachelor's Degree		TOEFL iBT	IELTS	IELA	Duolingo	GPA	Other
Accounting												
2-Semester	•	•	21-24/30	2.5	Bachelor's degree or equivalent in business with at least two courses in accounting	65	5.5	169	95	3.0	<ul style="list-style-type: none">• No grades below B-• No I or W/UW grades• GMAT overall score of 510. GMAT waived if GPA in degree courses is 3.5 or greater¹	
1-Semester	•	•	21-24/30			79	6.5	176	120			
Biology												
2-Semester	•	•	21/33	2.5	Bachelor's degree or equivalent in biology. Students must have a grade of B or better in at least three upper-level biology courses that are each equal to at least 3 semester hours (US system equivalent)	65	5.5	169	95	3.0	<ul style="list-style-type: none">• No grades below B• No I or W/UW grades	
1-Semester	•	•	24/33			79	6.5	176	120			
Business Analytics												
2-Semester	•	•	21/30	2.5	Bachelor's degree or equivalent	65	5.5	169	95	3.0	<ul style="list-style-type: none">• No grades below B-• No I or W/UW grades• GMAT overall score of 510. GMAT waived if GPA in degree courses is 3.5 or greater¹	
1-Semester	•	•	21/30			79	6.5	176	120			
Computer Science												
2-Semester	•	•	18/30	2.5	Bachelor's degree or equivalent in computer science or related field	65	5.5	169	95	3.0	<ul style="list-style-type: none">• No grades below C+• No more than one I or W/UW grades• GRE score at or above 50th percentile. GRE waived if GPA in degree courses is 3.5 or greater¹	
1-Semester	•	•	21/30			79	6.5	176	120			
Creative Arts Therapy Counseling												
2-Semester	•	•	48/60	2.5	Bachelor's degree or equivalent, with 18 credits of studio art, including drawing, painting and 3D art, and 12 credits of psychology courses	65	5.5	169	95	3.0	<ul style="list-style-type: none">• No grades below B• No I or W/UW grades	
1-Semester	•	•	51/60			79	6.5	176	120			
Cybersecurity												
2-Semester	•	•	18/30	2.5	Bachelor's degree or equivalent in business or computer science. Students interested in the Technology track must have taken course/s in programming and calculus with grades of B or better.	65	5.5	169	95	3.0	<ul style="list-style-type: none">• No grades below B• No I or W/UW grades• GRE score at or above 50th percentile. GRE waived if GPA in degree courses is 3.5 or greater¹	
1-Semester	•	•	21/30			79	6.5	176	120			
Data Science												
2-Semester	•		18/30	2.75	Bachelor's degree in mathematics, computer science, or a related discipline. Grade of B or better in calculus level 1 and 2 and computer science including programming and algorithms and data structures	65	5.5	169	95	3.0	<ul style="list-style-type: none">• No grades below C+• No more than one I or W/UW grades	
1-Semester	•		21/30			79	6.5	176	120			
Engineering Management												
2-Semester	•	•	18/30	2.5	Bachelor's degree or equivalent in engineering	65	5.5	169	95	3.0	<ul style="list-style-type: none">• No grades below B• No I or W/UW grades• GRE score at or above 50th percentile. GRE waived if GPA in degree courses is 3.5 or greater¹	
1-Semester	•	•	21/30			79	6.5	176	120			
Finance												
2-Semester	•	•	21/30	2.5	Bachelor's degree or equivalent in business with at least one class in each of the following: calculus, microeconomics, macroeconomics and accounting and 2 classes in statistics	65	5.5	169	95	3.0	<ul style="list-style-type: none">• No grades below B-• No I or W/UW grades• GMAT overall score of 510. GMAT waived if GPA in degree courses is 3.5 or greater¹	
1-Semester	•	•	24/30			79	6.5	176	120			
Health Administration												
2-Semester	•	•	36/48	2.5	Bachelor's degree or equivalent in business, clinical professions (e.g. medicine, dentistry, pharmacology), health professions, health science or other related area	65	5.5	169	95	3.0	<ul style="list-style-type: none">• No grades below B• No I or W/UW grades	
1-Semester	•	•	39/48			79	6.5	176	120			
Health Informatics												
2-Semester	•	•	28/41	2.5	Bachelor's degree or equivalent in business, clinical professions (e.g. medicine, dentistry, pharmacology), health professions, health science, computer science, or other related area	65	5.5	169	95	3.0	<ul style="list-style-type: none">• No grades below B• No I or W/UW grades	
1-Semester	•	•	31/41			79	6.5	176	120			
Higher Education Leadership and Policy Studies												
2-Semester	•	•	24/36	2.5	Bachelor's degree or equivalent	65	5.5	169	95	3.0	<ul style="list-style-type: none">• No grades below B• No I or W/UW grades	
1-Semester	•	•	27/36			79	6.5	176	120			
Information Systems												
2-Semester	•	•	21/30	2.5	Bachelor's degree or equivalent	65	5.5	169	95	3.0	<ul style="list-style-type: none">• No grades below B-• No I or W/UW grades• GMAT overall score of 510. GMAT waived if GPA in degree courses is 3.5 or greater¹	
1-Semester	•	•	21/30			79	6.5	176	120			
Languages Other Than English and TESOL												
2-Semester	•	•	28/40	3.0	Bachelor's degree or equivalent in target language (Arabic, Chinese/ Mandarin, French, German, Italian, Russian, or Spanish) or a minimum of 36 hours in college level course work above level 4, in the respective language.	65	5.5	169	95	3.0	<ul style="list-style-type: none">• No grades below B• No I or W/UW grades	
1-Semester	•	•	31/40			79	6.5	176	120			

Entry and progression requirements are subject to change and may vary by program.
¹Students with 3.0-3.49 GPA in degree courses during the pathway will be allowed to progress but must take the GMAT/GRE in the semester following progression.



Semester	Start Dates		Credits*	Entry Requirements					Progression Requirements		
	Fall	Spring		GPA	Bachelor's Degree	TOEFL iBT	IELTS	IELA	Duolingo	GPA	Other
Literacy Studies, Birth-Grade 6 or Grades 5-12											
2-Semester	•	•	20/32	2.5	Bachelor's degree or equivalent	65	5.5	169	95	3.0	• No grades below B • No I or W/UW grades
1-Semester	•	•	23/32			79	6.5	176	120		
MBA											
2-Semester	•	•	24/36	2.5	Bachelor's degree or equivalent	65	5.5	169	95	3.0	• No grades below B- • No I or W/UW grades • GMAT overall score of 470. GMAT waived if GPA in degree courses is 3.5 or greater¹
1-Semester	•	•	27/36			79	6.5	176	120		
Marketing											
2-Semester	•	•	21/30	2.5	Bachelor's degree or equivalent	65	5.5	169	95	3.0	• No grades below B- • No I or W/UW grades • GMAT overall score of 510. GMAT waived if GPA in degree courses is 3.5 or greater¹
1-Semester	•	•	21/30			79	6.5	176	120		
Public Health											
2-Semester	•	•	29/42	2.5	Bachelor's degree or equivalent in biology, health, public health, health policy, public policy, political science, economics, health care management, sustainability studies, anthropology or other related field One course in statistics	65	5.5	169	95	3.0	• No grades below B • No I or W/UW grades • GRE score at or above 50th percentile. GRE waived if GPA in degree courses is 3.5 or greater¹
1-Semester	•	•	32/42			79	6.5	176	120		
Public Relations											
1-Semester	•		30/36	2.75	Bachelor's degree or equivalent	85	7.0	185	120	3.0	• No grades below B • No I or W/UW grades
Sports Science [MS option: Exercise Physiology]											
2-Semester	•	•	22/34	2.5	Bachelor's degree or equivalent in exercise science, health and fitness, physical education or another related area	65	5.5	169	95	3.0	• No grades below B • No I or W/UW grades
1-Semester	•	•	25/34			79	6.5	176	120		
Sustainability											
2-Semester	•	•	18/30	2.5	Bachelor's degree or equivalent	65	5.5	169	95	3.0	• No grades below B • No I or W/UW grades
1-Semester	•	•	21/30			79	6.5	176	120		
Urban Ecology											
2-Semester	•	•	21/33	2.5	Bachelor's degree or equivalent in biology Students must have a grade of B or better in at least three upper-level biology courses that are each equal to at least 3 semester hours (US system equivalent)	65	5.5	169	95	3.0	• No grades below B • No I or W/UW grades
1-Semester	•	•	24/33			79	6.5	176	120		

Entry and progression requirements are subject to change and may vary by program.
¹Students with 3.0-3.49 GPA in degree courses during the pathway will be allowed to progress but must take the GMAT/GRE in the semester following progression.



Find out more at
www.intostudy.com/hofstra/academic-english



ACADEMIC ENGLISH »

Key Program Facts

Program length is 16 weeks

Minimum enrollment of 1 semester

Minimum age 16

High school diploma required

No English language requirement; students will be assessed and placed upon arrival

4 levels of instruction from true beginner to advanced

20 hours of instruction per week (28 hours in Summer)

Progression Requirements

International Year One 3-Semester Pathway

Completion of Academic English Level 3

International Year One 2-Semester Pathway

Completion of Academic English Level 4

Graduate Pathway 2-Semester Pathway

Completion of Academic English Level 4

Term Dates for Academic English

Fall 2022	Spring 2023	Summer 2023
Aug 2022	Jan 2023	May 2023

Our Academic English program prepares you for the university degree by improving your English language skills and providing you with the academic tools you need to succeed. Students like you will learn English in and out the classroom and you will be taught by our qualified and experienced faculty. You will have a chance to practice your English during your everyday life with native speakers. On top of that, you will receive customized support for international students to help you transition to life at a US university.

What You will Learn

- Understand US values in an academic setting.
- Present spoken and written ideas accurately and effectively in English.
- Write research papers with proper use of citations and references.
- Read, understand and critically evaluate academic texts.
- Understand and use vocabulary common to academic disciplines.
- Take useful and accurate notes in academic lectures and presentations.

Academic Study Plan Calculator

Our Academic Study Plan Calculator will help you estimate your study plan. Simply add your academic program and English scores and receive an estimated study plan showing your duration of study. <https://estimateus.intostudy.com>

Invest in your degree.
Invest in your future.
Invest in you.

With a strong foundation and on-the-job experiences, your education can determine how far you go in your career. Based on your program, you will receive the level of support that corresponds to your academic profile, English language scores and budget.

Whether you're enrolled in our Pathway programs, Undergraduate Transfer Program or Academic English program, you will have access to our Pre-arrival Success Services and airport pickup when you arrive. You can also enjoy housing coverage and extra meals during university holidays and breaks.

Programs

There are two main semesters per academic year (Fall, Spring), each about 17 weeks long with a shorter Summer semester of 14 weeks

Undergraduate

	International Year One or Undergraduate Transfer Program (UTP)			Undergraduate Direct	
Program Length	1 Semester	2 Semesters	3 Semesters <small>(Not available for UTP)</small>	1 Semester	2 Semesters
TUITION AND FEES	\$29,970	\$52,170	\$61,670	\$26,210	\$52,430
Campus Housing	\$10,050	\$20,100	\$30,150	\$10,680	\$21,360
Meal Plan	\$3,090	\$6,180	\$9,270		
Insurance	\$1,070	\$1,940	\$2,575	\$1,175	\$2,350

Graduate

	Graduate Pathway		Graduate Direct Business Programs		Graduate LLM Program		Graduate Direct All Other Programs	
Program Length	1 Semester	2 Semesters	1 Semester	2 Semesters	1 Semester	2 Semesters	1 Semester	2 Semesters
TUITION AND FEES	\$22,320	\$38,730	\$15,020	\$30,040	\$33,970	\$67,930	\$14,700	\$29,390
Insurance	\$1,070	\$1,940	\$1,175	\$2,350	\$1,175	\$2,350	\$1,175	\$2,350

Academic English

Program Length	1 Semester
TUITION AND FEES	\$8,120
Campus Housing	\$10,050
Meal Plan	\$3,090
Insurance	\$1,070

Cost of Books and Supplies estimated at \$500 per semester

Campus Housing

International Year One and Academic English students 21 and under are required to live on campus. Living on campus is highly encouraged even when not required. Pathway and AE students living on campus have access to:

- A free linen package
- Early move-in prior to orientation
- Guaranteed suite-style rooms
- More than a dozen of on-campus dining locations
- Unlimited access to on-campus fitness center
- 24-hour campus safety and security through the resident safety program
- Free shuttle bus to trains, shopping and local area
- Dedicated student support staff and resident assistants who can provide immediate support and attention.

Single occupancy rooms: **\$11,580/semester** Double occupancy rooms: **\$10,050/semester**
Meal plan: **\$3,090/semester**. Prices for housing include breaks during the academic year (spring break, holidays, etc).

Are you an F-1 student? You will need to provide proof of funding in order to get your I-20. Proof of funding is a way a student shows they have sufficient funds (usually via a recent bank statement) to live and study full-time in the US for up to one academic year. This is different from the cost of attendance OR a statement of account. The proof of funding amount will not be an amount that is billed to you and is solely for immigration purposes. To find out more about proof of finances for immigration purposes, visit www.intostudy.com/en/hofstra/costs

Scholarships

Find out more about scholarships www.intostudy.com/hofstra/scholarships

SCHOLARSHIP	AMOUNT		ELIGIBILITY	TUITION PAYABLE FIRST YEAR ¹
INTO Hofstra Regional Scholarship	Up to \$15,000 International Year One/UTP (2-Semester)		<ul style="list-style-type: none">Fully admitted to an International Year One program, Undergraduate Transfer Program or Graduate Pathway program300-400 word personal statement may be required for some regionsScholarship interview may be required for some regionsLimited availability: first come, first servedAmount subject to change - limited awards at maximum valueContact your INTO representative for more information	\$37,170
	Up to \$12,000 Graduate Pathway (2-Semester)			\$26,730
Undergraduate Progression Scholarship	Up to \$52,000 (\$13,000 per year)	Renewable up to 3 years	<ul style="list-style-type: none">Enrolled Hofstra degree-seeking student after successful completion of International Year One or Undergraduate Transfer ProgramWith a minimum GPA of 3.5, the student will be awarded up to \$10,000With a minimum GPA of 3.75, the student will be awarded up to \$13,000The award is renewable upon meeting all outlined requirementswww.intostudy.com/hofstra/scholarships	
Graduate Progression Scholarship	Up to \$8,000 (\$4,000 per year)	Renewable up to 1 year	<ul style="list-style-type: none">Enrolled Hofstra degree-seeking student after successful completion of a Graduate Pathway programWith a minimum GPA of 3.5, the student will be awarded \$2,000.With a minimum GPA of 3.75, the student will be awarded \$4,000The award is renewable upon meeting all outlined requirementswww.intostudy.com/hofstra/scholarships	
Undergraduate Hofstra Scholarships and Merit Awards	Up to \$122,000 (\$30,500 per year)	Renewable up to 4 years	<ul style="list-style-type: none">Enrolled Hofstra degree-seeking studentMinimum 3.0 GPA and SAT 1150 (or ACT 23) or minimum 3.5 GPA without standardized test scoreReward amount varies based on GPA and standardized test scores.www.hofstra.edu/admission/adm_firstyear_scholarship.html	
Graduate Direct Scholarship	Varies depending on program	Varies depending on program	<ul style="list-style-type: none">Varies depending on programwww.hofstra.edu/academics/grad/grad_fa_scholarships.html	

Scholarship amounts and eligibility requirements are subject to change.
Renewable scholarships require students to meet a minimum GPA requirement each semester.
¹These are estimated tuition payments assuming a student receives the maximum scholarship value listed for this program.

All prices are estimated from 2021-22 and are subject to change. Please visit www.intostudy.com/en/hofstra/costs for exact pricing.

What do students get out of campus housing?
Enrich your US university experience by living on campus. See page 6.

For details about Terms and Conditions, Country Scales and English Waivers, visit www.intostudy.com/hofstra/terms

HOW TO APPLY

Choose from two easy ways to apply

1 Apply via your local
INTO educational counselor

2 Apply online
Complete our online application form:

INTO Hofstra Programs:
apply.intostudy.com/hofstra

Direct Undergraduate:
www.hofstraadmission.org/international

Direct Graduate:
www.hofstra.edu/graduate/apply.html



INTO

Through innovative partnerships with leading universities, we expand opportunities for higher education, ensuring success and transforming the lives of our students and staff.

INTO GIVING

Working across the globe, INTO Giving supports projects that increase access to education and improve the quality of teaching and learning. For more information, visit www.into-giving.com



HOFSTRA
UNIVERSITY®

INTO Hofstra University

Weller Hall
134 Hofstra University
Hempstead, NY 11549-1340
USA

T: +1 516-463-6500

E: HofstraAdmissions@intoglobal.com
www.intostudy.com/hofstra

Find us on:

 facebook.com/intohofstra

 instagram.com/intohofstra

 twitter.com/intohofstra

 myin.to/HofstraYouTube

Chat online

with our students!



www.intostudy.com/chat-hofstra



WeChat



Youku



Virtual Campus Tour

Take a campus tour from home
with Hofstra's Virtual Tour at

www.youvisit.com/hofstra

Discover more online

For counselors:
partnerportal.intoglobal.com/hofstra

For students:
www.intostudy.com/hofstra

Connect with us



Education counselor's stamp