

BLAZE

YOUR TRAIL WITH US

Guide for International Students | 2021-2022



Why Choose the University of Alabama at Birmingham?



#71

TOP PUBLIC SCHOOLS

*U.S. News & World Report 2021
Top Public Colleges & Universities list*

#1 in the U.S. and #12 Worldwide

YOUNG UNIVERSITY

*Times Higher Education World University Rankings,
2019 Young University Rankings*

#175

BEST GLOBAL UNIVERSITIES

U.S. News & World Report 2020

#1 Among Alabama Universities

Center for World University Rankings 2018-2019

#1 in the US for Community Outreach Efforts Around Health and Well-Being

Times Higher Education Impact Rankings 2020

UAB is the largest single employer
in Alabama with **23,000+ employees**

UAB has more research funding than all
other universities in Alabama combined.



17 PROGRAMS IN THE TOP 25

*U.S. News & World Report 2020-2021
America's Best Graduate Schools list*



Top-Ranked Programs

- #1 Master's in Healthcare Management
- #6 Master's Nurse Practitioner: Family
- #19 Master's in Public Health
- #58 Master's in Biomedical Engineering
- #133 Best Computer Science Schools
- #140 Best Engineering Schools

U.S. News & World Report 2021 Best Graduate School Rankings

\$7.15 BILLION ANNUAL ECONOMIC IMPACT
in the state of Alabama

Exceptional Research Funding

\$602M in research
expenditures

**Highest research activity
designation** by the Carnegie
Classification of Institutions of
Higher Education

#8

NIH Funding
Among Public Universities
National Science Foundation 2018

#15

Federal Funding
Among Public Universities
National Science Foundation 2018

FAST FACTS

Founded: **1969**

Campus: **Birmingham, Alabama**

Metro Population: **1.2 million**

Campus Size: **275 acres**

Enrollment: **22,563**

International Students: **1,000+**

Countries Represented: **100+**

Bachelor's: **56**

Master's and PhD: **100+**

Research: **\$602M**





About the University of Alabama at Birmingham

UAB is a place for dreamers and doers, artists and scientists, idealists and realists. As an internationally renowned, public research university and academic health center, our reach stretches across classes, cultures and continents into inner-city classrooms, rural clinics and the far corners of the globe.

Academic Excellence

If you are seeking knowledge that will change your world, the University of Alabama at Birmingham is for you. We're a university without walls, where no one is worried about fitting in—just standing out. Here, you will be a part of a diverse campus population, take part in world-class research and serve your global and local community while receiving an education that will prepare you for a bright future. As a nationally recognized academic health science center in the state's most populous metropolitan area, UAB is a great place to earn your degree and pursue your career.

Research with Global Impact

Our research faculty rank among the nation's best funded and are noted for exceptional mentoring and training. You can directly interact and receive mentoring from legends such as Sarah Parcak PhD, winner of the \$1 million TED prize and National Geographic Fellow, or James McClintock PhD, a leading authority on the effects of climate change in Antarctica. Our goal is to ensure you receive the best education possible while helping solve global problems.

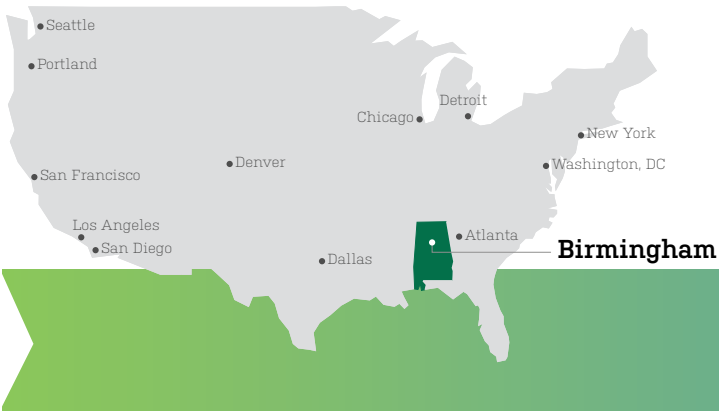


The state's fastest high-performing research computer will be found at the 40,000-square-foot UAB Technology Innovation Center, which is set to open in the 2020-2021 academic year.



"Our university's goal is to establish a presence around the world while bringing the world to UAB."

Ray L. Watts, MD, President



Birmingham Tech Boom

Through the work of the Velocity Accelerator and the Innovation Depot, the city has seen successful startups launch such as Shipt, a grocery delivery service, and Daxko, a software for health and wellness organizations. Birmingham was named among the top five up-and-coming tech hot spots by *MarketWatch* in 2019.

18+ student CEOs have developed their business ideas at the UAB iLab at Innovation Depot



A Destination for Entrepreneurs

From medicine to business to technology, UAB strives to bring solutions to the market. Through the Bill L. Harbert Institute for Innovation and Entrepreneurship, the university connects scientists and entrepreneurs with industry.

Empowered by Innovation

UAB is a founding partner of Innovation Depot, the largest high-tech incubator in the Southeast, which has had an economic impact of \$2.65 billion in the past five years. Through the UAB iLab, students receive training and resources to help accelerate their business ideas and start their own companies.



RESEARCH FAST FACTS

- 7,000+ undergraduate students and 7,600+ graduate students involved in research
- High research placement rate for undergraduates
- 10 UAB medicine specialties ranked in the nation's top 50 in the *U.S. News & World Report 2018-2019 Best Hospitals rankings*



For more information about research at UAB, visit uab.edu/research

The INTO UAB Advantage

The University of Alabama at Birmingham partners with INTO to create a support system for international students. Our Academic English, International Year One, Undergraduate Transfer Program, Integrated Master's Program and Graduate Pathway programs help you transition to a US degree program. You will enter a fully integrated program where you will learn alongside your American peers to earn academic credits towards your UAB degree while developing your English skills. Upon successful completion of your program, you will progress to a UAB degree program.

We provide services such as:

- Academic advisors to support your transition to a degree program
- English tutoring and degree-focused tutoring at no additional cost for students enrolled in a Pathway or Academic English program
- Language Exchange program
- Language Partners program
- Learning Resource Center
- Personalized academic, language and cultural support
- Visa and immigration support
- Workshops designed to enhance the learning experience and cultural skills

UAB Student Success

Undergraduate and Graduate Progression Rate 2018-2019

98.8% Eligible Students

95.8% of Eligible Students ENROLLED

98.8% of all Pathway students were eligible to progress into UAB in 2018-19. Eligible students are those who successfully completed the Pathway program and qualified for admission as degree-seeking students. Enrolled students are those who enrolled as degree-seeking students in their next term of degree study at UAB.



Living in Birmingham

Birmingham is a metropolitan area of 1.2 million people and was once named one of 52 places to visit by *The New York Times*. As a student, you get the perk of living in a travel destination. With so many places to go within walking distance, you'll find yourself encountering the best of Birmingham's thriving food, arts and entertainment scene without venturing far from campus. Best of all, Birmingham is a safe city that you can feel comfortable exploring.



Birmingham Must-See Locations

Influenced by its rich Southern culture, Birmingham is known for its food scene, industry connections and outdoor adventures.

- Listen to live music at the historic Alabama Theatre or Iron City.
- Learn about the history of auto racing and see the world's largest motorcycle collection at the Barber Motorsports Museum.
- Visit the nation's second-largest urban nature preserve, Ruffner Mountain, only 10 minutes from campus.
- Take a breath of fresh air at Railroad Park, a 19-acre greenspace with food-truck rallies, a bike-share program with solar-powered docking stations and running trails.
- Catch a breathtaking Alabama sunset while overlooking downtown Birmingham at Vulcan Park and Museum, home to the largest cast-iron statue in the world.
- Enjoy Broadway musicals, rock concerts and national conventions at Birmingham Jefferson Convention Complex.



Local Flavor

Whether you're on campus or downtown, you won't have to go far to find great spots to eat. Thanks to Southern traditions and award-winning chefs, Birmingham's food scene has earned worldwide press from food critics. In the past year, the prestigious *Food & Wine* magazine relocated its headquarters to Birmingham from New York City. No matter what you're craving, you're bound to find it in Birmingham or on campus. Eat at Highlands Bar and Grill, named most outstanding restaurant in America by the James Beard Foundation in 2018.



Birmingham Named Among Top 10 Most Affordable Cities to Live and Work by *Business Student* in 2019



"UAB is a great place for everyone. Apart from being a top medical school and hospital in the country, UAB has great energy. They not only provide you with the best education and resources but also give you some memorable experiences that you can cherish later in your life. It just has a great vibe to it."

Nabaa, Pakistan
International Year One in Science

DIVERSITY

- One of 14 universities recognized as a diversity champion by *INSIGHT Into Diversity Magazine 2020*
- 1,160+ international students and 763+ international faculty, staff and visiting scholars, representing over 100 countries
- UAB has more than 100 international partnerships with universities, hospitals and other organizations

It's a Beautiful Day in the Neighborhoods of Birmingham

You might not notice it at first, but Birmingham has 99 distinct neighborhoods. Take a look at just a few of our city's most iconic districts:

- **Avondale:** Similar to Brooklyn in New York or Silverlake in Los Angeles, this bohemian neighborhood includes an artist makerspace, eclectic restaurants, hip coffee shops, speakeasies (1920's style joints), art studios, a craft brewery and outdoor music venues.
- **Lakeview:** With a mix of eateries and music venues, Lakeview is one of the city's most happening and vibrant entertainment districts where you're bound to catch a show or concert for a night out on the town.
- **Five Points:** Coined as Birmingham's culinary destination, you'll see why our city has racked up its share of foodie awards. Five Points is where you'll find yourself most often—it's just a few blocks from campus.
- **Highland Park:** As one of the oldest neighborhoods in Birmingham, Highland Park gives a glimpse of the past through its grand houses and vintage architecture. If you want an authentic introduction to all things Southern charm, look no further.

The Birthplace of Civil Rights

Visiting the Birmingham Civil Rights Institute (BCRI) will thoroughly educate you about the city's, the state's and the entire nation's journey to passing civil rights legislation. Since Birmingham is the epicenter of the civil rights era, the BCRI has carefully curated exhibits to educate visitors about the hardships, sacrifices and pivotal moments that got us to where we are today. The museum walks you through the work of legendary civil rights activists that earned all Americans the right to vote. There are spotlights on local heroes like Martin Luther King Jr. and Rosa Parks, as well as introductions to lesser known individuals who played a role in this milestone in American history.



Condé Nast Traveler declared that "Birmingham has arrived" in its 2019 feature, **The Reinvention of Birmingham.**





UAB'S CAMPUS is close to downtown Birmingham and is full of green spaces. It is a cultural melting pot and an exciting place to get involved in campus organizations. See what campus life will be like for you.

A PICTURE-PERFECT CAMPUS

- The new 231,000-square-foot Residence Hall (Green Hall) opened Fall semester of 2020 to help meet the increased demand for on-campus housing
- UAB Recreation Center (REC) included in 50 Best RECs *College Consensus 2018*
- Ongoing campus transformation with brand-new buildings for the Collat School of Business, School of Nursing and College of Arts and Sciences
- New recreational facilities including an intramural field, a track and field venue, and a renovated soccer stadium
- Recently opened Genomic Medicine and Data Research building housing scientists and advanced technology
- 13+ on-campus dining locations
- Home to more than 4,400 trees, UAB has been named a *Tree Campus USA* university by the Arbor Day Foundation for five consecutive years

On-Campus Housing

Program	REQUIRED*	NOT REQUIRED
Academic English (AE)		■
AE + International Year One (IYO)	■	
IYO	■	
AE + Undergraduate Transfer Program (UTP)		■
UTP		■
Undergraduate Direct	■	
AE + Graduate Pathway (GPW)		■
GPW		■
Integrated Master's Program (IMP)		■
Graduate Direct		■

*On-campus housing is required for the first two semesters.

Meal Plan: All on-campus housing options include meal plans. If you live off campus, you will have the option to purchase a meal plan when you arrive.

No on-campus housing is available for the following study plans:

- Academic English (October start dates only)



Undergraduate Suite-Style Double Room, Shared Bathroom Apartment



Graduate Double Room, Shared Bathroom Apartment



Student Life

- 250+ student clubs and organizations focusing on leadership, cultures, civic engagement, fraternities and sororities, faith, media and more
- 20 club sports including lacrosse, soccer, cricket and rugby
- 18 Division I sports teams

Safety and Security

- Your safety is our top priority. Here's how UAB works to make sure you feel safe on campus:
- Buildings monitored by electronic access control systems 24 hours per day
 - Residence halls staffed 24/7 and guest check-in required before entry
 - Dedicated on-campus police force that regularly patrols all areas of campus.
 - 490+ Help Phones across UAB campus, directly connecting with UAB Police
 - Rave Guardian app, directly connecting with UAB Police and emergency services
 - B-ALERT, the university's emergency notification system, communicating emergency-related information through voice calls, SMS and email
 - Confidential counseling services are available to all UAB students at no cost



Cutting-Edge Programs

UAB has programs as unique and diverse as its campus community. From traditional majors like business, nursing and computer science to emerging fields such as biotechnology and biomedical engineering, UAB has top-of-the-line programs for every interest. With \$602 million in total research expenditures; brand-new facilities including plans for a science and engineering complex; and a technology innovation center, UAB has the assets to back up your curiosity.

Business

www.uab.edu/business

- The UAB Collat School of Business is accredited at the bachelor's and master's levels by the Association to Advance Collegiate Schools of Business International, representing the highest standard of achievement for business schools worldwide.
- UAB MBA students vary in age and academic background and come from all over the world.
- This diversity provides a dynamic classroom experience that mirrors the workplace.
- As a result, students are able to approach and solve business problems from varying perspectives.

Biotechnology

www.uab.edu/shp/cds/biotechnology

- UAB's biotechnology program trains students to find solutions through scientific research and produce innovative products for the commercial market.
- Using a "learn-by-doing" approach, classroom and laboratory skills are honed through an internship at one of more than 550 biotech enterprises.
- Graduates are uniquely qualified for high-quality jobs and achieve an annual postgraduate employment rate of 95% or better.

Computer Science

www.uab.edu/cas/computerscience

- Students in computer science programs gain firsthand experience working directly with faculty who conduct research in cyber security, data science and big data analytics, biomedical applications, and advanced cyber infrastructures.
- Graduates of computer science programs include successful entrepreneurs and technology leaders at Facebook, Google, Microsoft, LinkedIn, PayPal, eBay, Uber, Visa and national labs.

Cyber Security and Data Science

- UAB cyber security brings together both faculty and curriculum from computer science and criminal justice to tackle the threats to data and privacy in the digital age.
- Facebook's donation of \$250,000 to UAB led to the creation of the Facebook Suite on campus. Here, you can polish your skills in tracking down spammers and hacking threats so that you graduate with a proven résumé and portfolio of projects in cybercrime solving.

Education

www.uab.edu/education

- UAB's School of Education is ranked among the top 100 graduate schools of education in the nation by *U.S. News & World Report 2021 Best Graduate School Rankings*.
- Here, you can study to become a teacher, education leader, exercise scientist or counselor.
- The School of Education is accredited by the National Council for Accreditation of Teacher Education and the Council for Accreditation of Counseling and Related Educational Programs.



FACEBOOK SUITE



UAB was named a **Top University for Professional Sales Education** by the *Sales Education Foundation* in its 2018 ANNUAL magazine.

#5 Most Affordable Campus Master in Public Health

MPH Online 2019

Public Health

www.soph.uab.edu

- In 2019, UAB was awarded a five-year, \$37.5 million grant from the National Institute of Allergy and Infectious Diseases Centers of Excellence for Translational Research to study and develop treatments for high-priority infections. These include the coronaviruses that caused SARS and MERS, with the addition now of the novel coronavirus that causes COVID-19. In addition, UAB is among the US sites hosting new clinical trial for COVID-19 treatment and joining an international effort coordinated by Scripps Research to test drugs for COVID-19.
- Specializations span from epidemiology to healthcare organization and policy.
- The School of Public Health's collaborative teams work to solve our communities' hardest problems and conduct fundamental research that helps create the foundation for future learning.

LEADING HEALTH AND MEDICINE

in *U.S. News & World Report 2021 Best Graduate School Rankings* list

#3 Master's Nursing Administration

#5 DNP Nurse Practitioner: Family

#34 Best Medical Schools: Primary Care

#62 Biological Sciences

Nursing

www.uab.edu/nursing

- UAB nursing students get to observe complex patients with in-depth exposure to clinical experiences and simulations in brand-new \$32-million, state-of-the-art facility.
- Our students are trained in a nursing school that is ranked No. 15 for a master's and No. 19 for a doctoral degree in the nation by *U.S. News & World Report 2021*.
- On top of that, we have clinical sites within walking distance from the School of Nursing to one of the nation's largest and highest ranking academic medical centers.

Engineering

www.uab.edu/engineering

- UAB's School of Engineering weaves together strengths from other departments, such as medicine and sustainability, to offer engineering programs tailored to today's tech forecast.
- Between the Department of Biomedical Engineering's alignment with the School of Medicine and our ranking in the top five nationally in NIH funding for four years in a row, our biomedical engineering program has the resources and dedication to teach you how to create products that best address global health issues.
- Other robust areas of research and graduate education for the rest of the School of Engineering include electrical and computer engineering, mechanical engineering, materials engineering and civil engineering.



CAREERS at UAB

What Can UAB Do for Your Career?

UAB offers career services staff and resources that enable students to connect with employers and gain professional experience through the following activities:

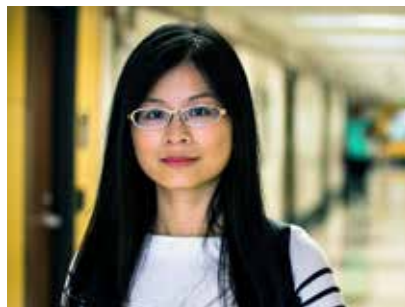
- Career fairs
- Career planning tools
- Handshake (job listing website)
- On-campus interviews
- Personalized advising

Internships in Birmingham

At UAB, our career services team can help with internship placement, so you can apply what you learn in your classes to the real world and gain industry experience. Internships are available with UAB's employer partners, or within the university itself.

EMPLOYERS OF UAB GRADUATES:

- Apple
- AT&T
- Boeing
- Eli Lilly
- Ford Motor
- Goldman Sachs & Co.
- Google
- Honda
- IBM
- Intel
- Justice Department
- LinkedIn
- Microsoft
- Salesforce.com
- Sprint
- UAB
- United Health Group
- Visa
- Wells Fargo & Co.
- Xerox Corporation



Ping-Jo from Taiwan
MBA/MPH Dual Degree

"My goal is to conduct research in the innovation of the healthcare industry. Studying a dual degree in business administration and public health gives you an advantage. You combine your knowledge in finance and public health to discover new things that allow you to look at academic reports through multiple perspectives."

Learn more about PingJo's story:
myin.to/UABPingJo



Yingnan from China
Master's in Biotechnology

"When I chose to study biotechnology at UAB, it was because of the high ranking of the university... I'm doing my research in breast cancer treatment where I look into antibody development and target therapy. Studying the Pathway program in biotechnology, you are taught the business skills to commercialize ideas and to find solutions using science."

Yingnan started his PhD in biomedical engineering at UAB in Fall 2019

Learn more about Yingnan's story:
myin.to/UABYingnan



Sourabh from India
Master's in Electrical and Computer Engineering

"I'm working full-time as a project analyst in the engineering department of Ford Motor Company in Michigan. What the company was looking for was exactly what I studied in the INTO Pathway and the university. When I was a student at UAB, all classes that I took are very related to my job requirements. In addition, I was working with my professor for 1.5 years, and I got the graduate assistance job from School of Engineering after I completed my Pathway at INTO UAB. I also built electrical-related devices for medical department at UAB. I think these experiences really helped me to get this good job."



Innovation and Entrepreneurship at UAB

Patrick Murphy, PhD, joined UAB as the Goodrich Endowed Chair for Entrepreneurship and as a professor in the Collat School of Business to expand UAB's entrepreneurial reach. Through studying in Beijing, working with the Middle East and traveling through Southeast Asia and Europe, Dr. Murphy has developed an expertise for working with international organizations and entrepreneurs. He currently hosts events, like weekly meetups with entrepreneurs and organizations outside the university, to talk with students who share their career aspirations.

"Now as an entrepreneurship professor, I especially welcome those entrepreneurial people in America who are from other countries. We can work with you around cultural differences and barriers to really help you find your opportunity as an entrepreneur here in Birmingham."

- Patrick Murphy, PhD

NAMED ONE OF THE "BEST PLACES IN AMERICA TO START A BUSINESS"

Inc. 2018



- DR. PATRICK MURPHY

Innovation Challenge

UAB brings Shark Tank from the screen to your classroom in the Innovation Challenge. Through the competition, you submit an idea; receive coaching and mentoring from the UAB Commercialization Accelerator; potentially launch your own startup; and have the chance to win up to \$5,000 in prize money.

Green and Gold Fund

Led by students in the Collat School of Business, the Green and Gold Fund manages more than \$600,000 in assets. The fund allows students to perform actual investment portfolio management with real money, providing them with valuable experience for their future careers. All members have access to certification and trading in the state-of-the-art Bloomberg terminal lab at the brand-new Collat School of Business facility.

ACADEMIC PROGRAMS

FIND YOUR DEGREE. With a wide range of subject areas and admissions options, you can find the perfect degree for your chosen career. You can choose to apply for direct entry to the university or for a Pathway program that provides extra academic, language and cultural support. From the day you apply to the day you graduate, we are here to help you succeed every step of the way. Flip to the back cover to learn how to apply.

B = Bachelor's	M = Master's	D = Doctorate	
International Year One may lead to any bachelor's degree listed below.			
GP	Graduate Pathway program that can lead to this degree is indicated in blue. This UAB degree is available through direct entry.		
IMP	Integrated Master's Program provides customized support to direct entry students.		
●	This UAB degree program is available through direct entry.		
►	Designated STEM degree by the U.S. Department of Homeland Security. It may vary by degree level.		
★	Stipulations apply for admission to this bachelor's program; please visit department website for more information.		
International Year One			
Indicates the International Year One program that should be taken to progress to an undergraduate academic program. This degree is also available through direct admission.			
BU	Business	PN	Pre-Nursing
CS	Computer Science	PH	Public Health
EN	Engineering	SC	Science
GE	General		

	B	M	D
College of Arts & Sciences			
African-American Studies	GE		
Anthropology [MA concentration in Peace and Human Rights]	GE	●	
► Applied Mathematics			●
Art [BFA concentration in Art Studio] [BA concentrations in Art Studio and Art History]	GE		
Art History		●	
► Biology [BS concentrations in Integrative Biology, Marine Science and Molecular Biology]	SC	●	●
► Chemistry [BS concentrations in Biochemistry, Chemical Education, Forensic Chemistry, Polymer Chemistry]	SC	●	●
Communication Management		●	
Communication Studies [BA concentrations in Communication Management, Mass Communication Broadcasting, Mass Communication Journalism, Mass Communication Public Relations, Mass Communication, Sports Communication]	GE		
► Cyber Security		GP IMP	
► Computer Science [BA and BS concentration in Computer Networking]	CS	GP IMP	●
Criminal Justice [BS concentrations in Corrections, Policing, Criminology, Forensic Science, Juvenile Justice]	GE	●	
Cultural Heritage Studies		●	
► Data Science		GP IMP	
Digital Forensics	GE		
English [BA concentrations in Creative Writing, Linguistics, Literature, Professional Writing] [MA concentrations in Literature; Composition and Rhetoric; Creative Writing]	GE	●	
Foreign Language [BA concentrations in Applied Professional Spanish, French, Spanish]	GE		
► Forensic Science		●	
General Studies	GE		
Genetics and Genomic Sciences	SC		
History	GE	●	
Pre-Immunology	SC		
International Studies	GE		
► Mathematics [BS concentrations in Applied Math and Scientific Computation; Mathematical Reasoning]	SC	●	

	B	M	D
Medical Sociology	GE		●
Music [BA* concentrations in Music Education Vocal/Choral, Music Education Instrumental, Music Technology]	GE		
Musical Theatre [BFA]	GE		
Natural Sciences	SC		
► Pre-Neuroscience*	SC		
Philosophy [BA concentration in Ethics]	GE		
► Physics [BS concentration in Advanced Physics, Applied Physics, Biophysics, Computational Physics]	SC	●	●
Political Science [BA concentrations in American Government and Political Theory; Comparative Politics and International Relations]	GE		
Psychology [PhD concentrations in Behavioral Neuroscience; Developmental Psychology; Medical and Clinical Psychology]	GE		●
Public Administration [MSCJ/MPA Joint Program with Criminal Justice]			GP
Social Work [MSW concentration in Clinical/Medical Social Work]	GE	●	
Sociology [BA concentration in Social Psychology]	GE	●	
Theatre [BA concentrations in General Theatre; Pre-Professional Design and Technology; Pre-Professional Performance]	GE		
Collat School of Business			
Accounting [BS concentration in Forensic Accounting/Information Technology Auditing]	BU	●	
Business Administration [MBA concentrations In Finance, Entrepreneurship; Health Services, Management Information Systems, Marketing] [MPH/MBA Joint Program with MBA]			GP IMP
Economics [BS concentrations in Analysis and Policy; Mathematical Economics; Philosophy, Politics and Economics]	BU		
Entrepreneurship	BU		
Finance [BS concentrations in Financial Management; Investments and Institutions; Real Estate]	BU		
Human Resource Management	BU		
Industrial Distribution [BS concentration in Medical Equipment and Supplies Distribution]	BU		
Information Systems [BS concentration in Cybersecurity Management]	CS		
Management [BS concentrations in Business Administration, General Management, Operations Management]	BU		
Marketing [BS concentrations in Marketing Management, Professional Sales Management, Retail Marketing Management, Social Media Marketing]	BU		

	B	M	D
School of Education			
Arts Education [MAEd concentration in Music and Virtual Arts]		●	
Community Health and Human Services [BS concentrations in Community Health, Human Services]	GE		
Counseling [MA concentrations in Clinical Mental Health, Marriage; Couple and Family Counseling; School Counseling]		●	
Early Childhood and Elementary Education	GE	●	●
Educational Studies [MAEd concentrations in Early Childhood Education, Elementary Education, Secondary Education. Note: Secondary Education has specializations in mathematics, science, social sciences, visual arts]		GP IMP	
Educational Studies in Diverse Populations [PhD concentrations in Health Disparities with Diverse Populations, Metropolitan Education Studies, Pedagogical Studies for Diverse Populations]			●
Educational Leadership [MAEd, EdS, EdD]		●	●
English as a Second Language [MAEd concentration in Alternative MAEd/ESL, P-12 cert. (ESL, ESL/French, ESL/Spanish); Traditional MAEd/ESL, P-12 cert. (ESL, ESL/French, ESL/ Spanish); TESOL, non-certification (for teaching adult learners)]		●	
Health Education and Health Promotion	GE		●
High School Education	GE		
Kinesiology [BS concentrations in Exercise Bioenergetics, Exercise Science, Fitness Leadership] [MS concentrations in Physical Education, Exercise Physiology]	GE	●	
Reading Education		●	
Special Education [MAEd concentrations in Collaborative Teacher K-6 and 6-13; Early Childhood Special Education]		●	
Secondary Education [BS concentrations in English Language Arts, General Social Science] [MAEd concentrations in Biology, Chemistry, English, French, Language Arts, General Science, General Social Science, History, Mathematics, Physics]	GE	●	
Teaching English to Speakers of Other Languages [MAEd concentration in Teaching English to Speakers of Other Languages] [EdS concentration in Teaching English to Speakers of Other Languages]		GP IMP	●
School of Engineering			
► Biomedical Engineering [BSBME* concentrations in Biomaterials , Tissue Engineering and Biomechanics]	EN	●	●
► Civil Engineering [BSCE* concentrations in Sustainable Engineering Design and Construction] [MSCE concentrations in Structural Engineering/Structural Mechanics; Environmental Engineering; and Transportation Engineering]	EN	GP IMP	●
► Computer Engineering	EN		
► Electrical Engineering	EN		
► Electrical and Computer Engineering		GP IMP	
► Engineering Design	EN		
► Engineering Management [MEng in Advanced Manufacturing; Biomaterials and Tissue Engineering; Design and Commercialization; Environmental Engineering; Software Engineering; Vehicle and Robotics Engineering]		GP IMP	
► Interdisciplinary Engineering			●
► Materials Engineering [BSME* concentrations in Biomaterials, Metallurgy, Polymer Matrix Composites]	EN	GP IMP	●
► Mechanical Engineering*	EN	GP IMP	
School of Health Professions			
Administration Health Services			●
► Multidisciplinary Biomedical Science [MS concentrations in Genetics and Genomic Science; Microbiology; Bioinformatics Genetics & Genomics Sciences Immunology Neuroscience Pharmacology & Toxicology]		GP IMP	
► Biomedical and Health Sciences		●	
► Biomedical Sciences [PhD concentrations in Biochemistry; Structural and Stem Cell Biology; Cancer Biology; Cell, Molecular and Developmental Biology; Genetics; Genomics and Bioinformatics; Immunology; Microbiology; Neuroscience; Pathobiology and Molecular Medicine]	SC		●
► Biotechnology		GP IMP	

	B	M	D
► Clinical Laboratory Science		●	
Genetic Counseling		●	
Genetics, Genomics, and Bioinformatics			●
Health Administration [MSHA concentrations in Health Administration- Residential, Health Administration - Executive]		●	
► Health Physics		●	
Healthcare Management [BS concentrations in Clinical Manager, General Manager, Long-Term Care Administration, Pre-Professional Program]	GE		
► Healthcare Quality and Safety		●	
Nuclear Medicine Technology		●	
► Nutrition Sciences [MS tracks in Dietetic Internship/Clinical; Research; Lifestyle Management and Disease Prevention; Dietitian Education]		●	●
Rehabilitation Science			●
School of Nursing			
Nursing [BSN*, DNP, PhD]		PN	●
School of Public Health			
Bioinformatics		SC	
► Biostatistics		●	●
► Environmental Health Science			●
► Epidemiology			●
Health Education and Promotion			●
Public Health [BS concentrations in Environmental Health Sciences, General Public Health, Global Health Studies] [MPH concentrations in Healthcare Organization and Policy; Health Behavior, Epidemiology, Environmental and Occupational Health; Population Health; Maternal and Child Health Policy and Leadership] [MPH/MBA Joint Program with MBA] [MSPH concentrations in Clinical and Translational Science Epidemiology; Clinical and Translational Science Biostatistics; Clinical and Translational Science Health Behavior] [DrPH concentrations in Environmental Health; Health Care Organization Policy; International Health; Maternal and Child Health Outcomes Research]		PH	GP IMP ●



View program specific entry requirements at www.intostudy.com/uab/programs

UNDERGRADUATE ADMISSIONS >>

We offer several routes to begin your undergraduate studies. With 56+ bachelor's degrees, flexible study plans and start dates throughout the year, we'll help you find the option that's right for you.

There's no need to stress about where you start; just focus on where you're going. You can complete your degree at any stage. We don't design our programs for one type of student; our programs are built for every kind of student. Where you will begin depends on your grades and English level. Where you end up is where you want to be: graduating with a bachelor's from UAB.

→ **DIRECT ENTRY:** If you meet the academic and English language requirements for your degree program, you can apply directly to the University of Alabama at Birmingham.

To apply, you will need the following required documents: declarations, high school transcripts, university transcripts (for transfer applicants), proof of high school graduation (if transferring less than 24 credits), accounting of time when applicable, passport and English test score. An application fee may apply. For more information, visit www.uab.edu/students/admissions/apply#international

→ **INTERNATIONAL YEAR ONE:** International Year One allows you to begin earning credits toward your degree even if you do not meet the academic and English requirements for direct entry. You will receive additional academic, English language and cultural support to help you successfully complete your first year and graduate in the same amount of time as direct entry students. To graduate in this time frame, you may have to enroll in Summer semesters. The length of your degree program is dependent on your course requirements. For more information, visit www.intostudy.com/uab/programs

Entry Requirements				
PROGRAM	DIRECT ¹	INTERNATIONAL YEAR ONE		
		1-SEMESTER	2-SEMESTER	3-SEMESTER
Program requirements*	• High school diploma • Additional requirements may also be required	High school diploma		
Minimum GPA Equivalent	2.75	2.0	2.0	2.0
TOEFL iBT	77	77	60	50
IELTS	6.0 (overall with at least 5.5 on each section)	6.0	5.5	5.0
IELA	176	176	162	154
Duolingo	120	120	90	75
PTEA	51	51	44+	41+
Gaokao	120	120	110	105
Academic English	Level 5	Level 5	Level 5	Level 3

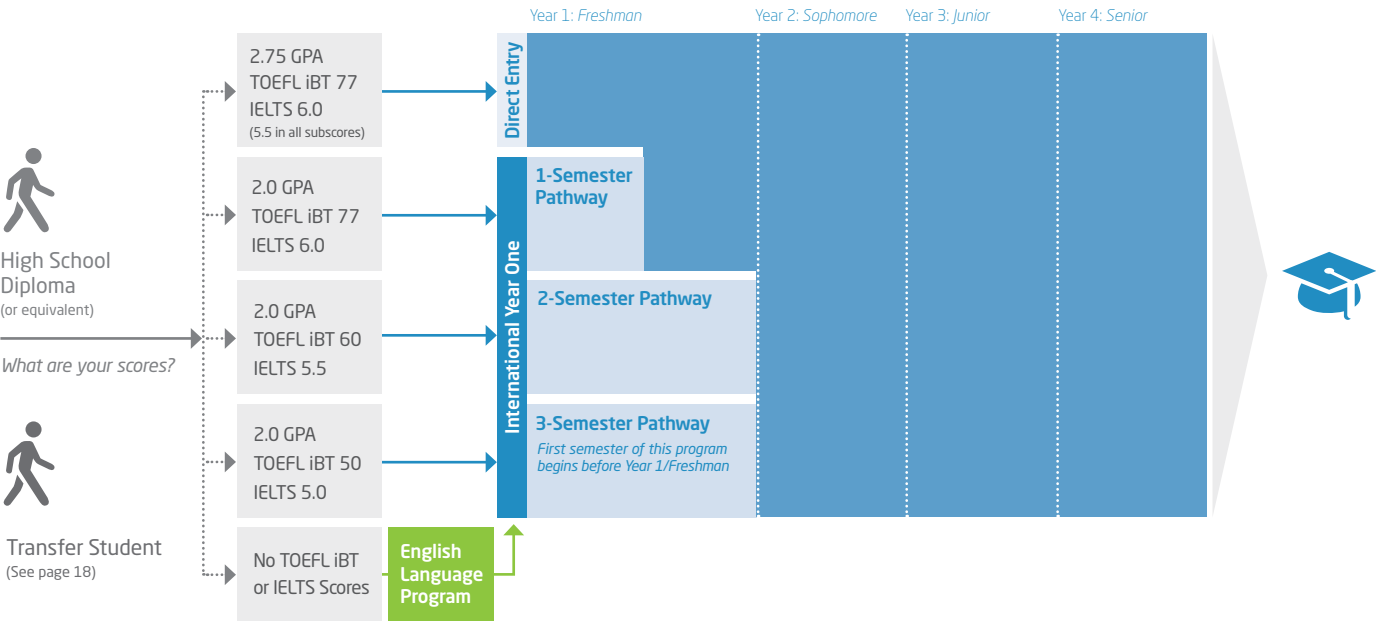
Notes: Entry requirements are subject to change and may vary by program.
¹ Meeting the minimum admission requirements does not guarantee admission to some specific programs. SAT or ACT may be required for some programs or if English is your native language.

Institutional Code	TOEFL: 1856	SAT: 1856	ACT: 0056
--------------------	-------------	-----------	-----------

Dates		
PROGRAM	DIRECT	INTERNATIONAL YEAR ONE
Start Dates	Fall 2021: Aug 2021 Spring 2022: Jan 2022 Summer 2022: May 2022	Fall 2021: Aug 17, 2021 Spring 2022: Jan 5, 2022 Summer 2022: May 4, 2022

→ **ENGLISH LANGUAGE PROGRAMS:** If you do not meet the direct or International Year One entry language requirements, you can enter our Academic English program to improve your academic and language skills. Once you have achieved the required language level, you can progress to International Year One or enter your degree program directly. Learn more on page 21.

Undergraduate Degree Program



International Year One Programs

*Estimated credits remaining after Pathway/Total credit hours needed to complete degree.

Semester(s)	Start Dates			Credits*	Entry Requirements: High School Diploma					Progression Requirements All GPAs are minimum cumulative	
	Fall	Spring	Summer		GPA	TOEFL iBT	IELTS	IELA	Duolingo	GPA	Other
Business											
3-Semester	•	•	•	81-84/120	2.0	50	5.0	154	75	2.0	• No W or I grade in a class • Grade of C or better in all classes • 80% Minimum in all required ELI courses
2-Semester	•	•	•	88-91/120		60	5.5	162	90		
1-Semester	•	•	•	104-106/120		77	6.0	176	120		
Computer Science											
3-Semester	•	•	•	83-84/120	2.0	50	5.0	154	75	2.0	• No W or I grade in a class • Grade of C or better in all classes • 80% Minimum in all required ELI courses
2-Semester	•	•	•	88-91/120		60	5.5	162	90		
1-Semester	•	•	•	104-106/120		77	6.0	176	120		
Engineering											
3-Semester	•	•	•	103-105/128	2.0	50	5.0	154	75	2.2 ¹	• No W or I grade in a class • Grade of C or better in all classes • 80% Minimum in all required ELI courses • Students must test into at least MA 105 ¹ Minimum 3.2 cumulative UAB GPA for BS in Biomedical Engineering
2-Semester	•	•	•	96-99/128		60	5.5	162	90		
1-Semester	•	•	•	112-114/128		77	6.0	176	120		
General											
3-Semester	•	•	•	83-84/120	2.0	50	5.0	154	75	2.0	• No W or I grade in a class • Grade of C or better in all classes • 80% Minimum in all required ELI courses
2-Semester	•	•	•	88-91/120		60	5.5	162	90		
1-Semester	•	•	•	104-106/120		77	6.0	176	120		
Pre-Nursing (BSN)											
3-Semester	•	•	•	101-104/126	2.0	50	5.0	154	75	3.0 ²	• No W or I grade in a class • Grade of B or better in all classes • 80% Minimum in all required ELI courses ² Minimum 3.2 GPA in Pre-Nursing courses
2-Semester	•	•	•	94-97/126		60	5.5	162	90		
1-Semester	•	•	•	110-112/126		77	6.0	176	120		
Public Health											
3-Semester	•	•	•	83-86/120	2.0	50	5.0	154	75	2.0	• No W or I grade in a class • Grade of C or better in all classes • 80% Minimum in all required ELI courses
2-Semester	•	•	•	88-91/120		60	5.5	162	90		
1-Semester	•	•	•	104-106/120		77	6.0	176	120		
Science											
3-Semester	•	•	•	84-88/120	2.0	50	5.0	154	75	2.0 ³	• No W or I grade in a class • Grade of C or better in all classes • 80% Minimum in all required ELI courses ³ Minimum 2.2 GPA for several majors
2-Semester	•	•	•	88-91/120		60	5.5	162	90		
1-Semester	•	•	•	104-106/120		77	6.0	176	120		

Entry and progression requirements are subject to change and may vary by program.

[SAMPLE INTERNATIONAL YEAR ONE PROGRAM] Engineering				
2-Semester Pathway		Degree Program Components		Program Information
Fall: August 17, 2021 Spring: January 5, 2022 Summer: May 4, 2022		128 credit hour program 29-32 credit hours apply from Pathway 96-99 credit hours remaining toward degree		
Entry Requirements • High school diploma • 2.0 minimum high school GPA equivalent • Language requirement • TOEFL iBT 60 or • IELTS 5.5 or • IELA 162 or • Duolingo 90 or • PTEA 44+ or • Gaokao 110	Semester 1	Course Title	Credit Hours	Progression Requirements • Minimum 2.2 cumulative UAB GPA (3.2 UAB GPA for Biomedical Engineering) • C or better in all courses • 80% minimum in all required ELI courses • Students must test into at least MA 105 Notes: Lab fees may apply. Online courses fees may apply. MA TBD: Depending on Math Placement test. To earn engineering degree, students must take MA 126, so students must place into MA 105 to graduate within four years. If courses have to be substituted due to availability or scheduling, substitutions will come from UAB's core curriculum, required of all undergraduate students These courses are generally delivered through the INTO UAB Center and are for Pathway students only.
	ELI 101	Academic Writing	3	
	ELI 102	Academic Reading	3	
	ELI 203	Academic Listening and Speaking	3	
	TBD	Core Curriculum Course	3	
	MA TBD	Math course based on testing	3-4	
	Total		15-16	
	Semester 2	Course Title	Credit Hours	
	ELI 205	English Skills for Academic Success	3	
	TBD	Core Curriculum Course	3	
1-Semester Pathway Fall: August 17, 2021 Spring: January 5, 2022 Summer: May 4, 2022	TBD	Core Curriculum Course	3	
	TBD	Exploring UAB or FYE Course offered by major	2-3	
	MA TBD	Math course based on testing	3-4	
	Total		14-16	
	Semester 1	Course Title	Credit Hours	
	ELI 206	Accelerated English Skills for Academic Success	3	
	TBD	Core Curriculum Course	3	
	TBD	Core Curriculum Course	3	
	MA TBD	Math course based on testing	3-4	
	TBD	Exploring UAB or FYE Course offered by major	2-3	
	Total		14-16	

www.uab.edu/engineering/home/departments-research



US UNDERGRADUATE EDUCATION SYSTEM

To graduate with your 4-year undergraduate degree, you will need to take the following classes:

Core classes: General education courses can include English composition, social sciences, humanities, history, mathematics and natural/physical science. These are typically taken at the beginning of your degree.

Major classes: These classes will be about the specific field of study you chose. They are typically taken toward the last part of your degree.





UNDERGRADUATE TRANSFER PROGRAM

Have you earned credits from another college or university and want to transfer to a US university? You can transfer directly into UAB or choose our Undergraduate Transfer Program (UTP), which is specifically designed to support international students through the process of transferring.

Entry Requirements		
PROGRAM	DIRECT TRANSFER	UNDERGRADUATE TRANSFER PROGRAM
Program length	N/A	1-Semester, 2-Semester or 3-Semester
Start Dates	Fall 2021: Aug 2021 Spring 2022: Jan 2022 Summer 2022: May 2022	Fall: Aug 17, 2021 Spring: Jan 5, 2022 Summer: May 4, 2022
GPA	2.0	2.0
TOEFL iBT	77	50-77
IELTS	6.0 (5.5 subscores)	5.0-6.0
IELA	176	154-176
Duolingo	120	75-120
PTEA	51	41-51
GaoKao	120	105-120
Minimum Transfer Credits	24	12
Maximum Transfer Credits	No credit limit (students must meet all additional requirements for their degree)	

Entry requirements are subject to change and vary by program.



Why Choose UTP?

Choosing UTP provides a customized, cost-effective path to your bachelor's degree. Before your program starts, UAB will provide you with an estimate of credits that will transfer to the university. Once you arrive on campus, our friendly staff will be available to help you transition into life at a US university. You will also have access to helpful resources including academic, English language and cultural support. If you do not meet the English language entry requirements for the UTP, you can enter our Academic English program before progressing to either the UTP or direct transfer to UAB.

UTP Benefits:

- Transfer of credits from your college or university-level classes to your degree at UAB
- Receive customized curriculum of university credit-bearing courses
- Quick turnaround time for offer (5-7 business days)
- Unofficial Pre-Arrival Credit Evaluation (1.5 additional business days after receiving offer letter)
- Guaranteed progression to any undergraduate program upon successful completion of your UTP
- Academic advising throughout the program including progression and student success advisors

Undergraduate Transfer Program Start Dates				
PROGRAM	Fall: Aug 17, 2021	Spring: Jan 5, 2022	Summer: May 4, 2022	
Business	●●●	●●●	●●●	
Computer Science	●●●	●●●	●●●	
Engineering	●●●	●●●	●●●	
General	●●●	●●●	●●●	
Pre-Nursing	●●●	●●●	●●●	
Public Health	●●●	●●●	●●●	
Science	●●●	●●●	●●●	
● 1-Semester program ● 2-Semester program ● 3-Semester program				

GRADUATE ADMISSIONS

UAB offers 100+ graduate degree programs, including 17 that are ranked among the top 25 in the nation by *U.S. News & World Report*. There are multiple ways you can begin your graduate studies.

How you start your program depends on your academic profile and your English level. How you finish your program is exactly how you pictured: graduating with a master's or PhD from UAB.

→ **Direct Entry:** If you meet the academic and English language requirements for your degree program, you can apply directly to UAB. To apply, you will need the following required documents: declarations, university transcripts, proof of degree, CV, 2 letters of recommendation, personal statement and passport. An application fee may apply.

Graduate degrees are competitive, and an extensive review of your application will be done. Please expect a longer turnaround for an admissions decision. For more information, visit www.uab.edu/graduate/admissions/international-applicants

→ **Integrated Master's Program:** Our Integrated Masters Program (IMP) is designed for students who meet direct entry English requirements but could benefit from academic support. The curriculum consists of three classes that count towards your degree plus a fourth class that focuses on graduate research, academic success skills and how to navigate the US higher education system. IMP is one-semester long and allows students to automatically continue in their degree program with good academic standing.

→ **Graduate Pathway:** Our Graduate Pathways allow you to begin earning credits toward your degree even if you do not meet the academic and English requirements for direct entry. The program will help build the academic foundation and essential English language skills you need to successfully progress to your master's degree. For more information, visit www.intostudy.com/uab/programs

→ **English Language Programs:** If you do not meet the direct or Graduate Pathway program entry language requirements, you can enter our Academic English program to improve your academic and language skills. Once you have achieved the required language level, you can progress to a Graduate Pathway program or enter your degree program directly. Learn more on page 21.

Entry Requirements					
PROGRAM	DIRECT ¹		GRADUATE PATHWAY		
	DIRECT ENTRY	INTEGRATED MASTER'S PROGRAM	1-SEMESTER	2-SEMESTER	3-SEMESTER
Program requirements	• Undergraduate degree • Minimum GRE or GMAT, if required by desired degree program. • The degree program you select may have additional requirements with which you must comply.	4-year undergraduate degree or equivalent	4-year undergraduate degree or equivalent		
Minimum GPA Equivalent	3.0	2.8	2.5	2.5	2.5
TOEFL iBT	80	80	80	65	65
IELTS	6.5	6.5	6.5	5.5	5.5
IELA	176	176	176	169	169
Duolingo	120	120	120	95	95
PTEA	53	53	53	44	44
Academic English	Level 5	Level 5	N/A	Level 4	Level 4

Notes: Entry requirements are subject to change and may vary by program.

¹ Meeting the minimum admission requirements does not guarantee admission to the University of Alabama at Birmingham or any specific program. Admission decisions may be based on such factors as the suitability of the applicant's research interests, the availability of professors in a particular field of research and the number of qualified applicants.

Institutional Code	TOEFL: 1856	GRE: 1856	GMAT: 1CB561
--------------------	-------------	-----------	--------------

Dates		
PROGRAM	DIRECT	GRADUATE PATHWAY
Start Dates	Fall 2021: Aug 2021 Spring 2022: Jan 2022 Summer 2022: May 2022	Fall 2021: Aug 17, 2021 Spring 2022: Jan 5, 2022 Summer 2022: May 4, 2022

Graduate Pathway Programs

* Estimated credits remaining after Pathway/Total credit hours needed to complete degree.

Semester	Start Dates			Credits*	Entry Requirements						Progression Requirements All GPAs are minimum cumulative	
	Fall	Spring	Summer		GPA	Undergraduate Degree	TOEFL iBT	IELTS	IELA	Duolingo	GPA	Other
Biotechnology												
2-Semester	•	•	•	25/37	2.5	4-year undergraduate degree in biochemistry, biology, biotechnology, chemistry, engineering, mathematics, physics, psychology, sociology	65	5.5	169	95	3.0	<ul style="list-style-type: none">• No W or I grade in a class• Grade of B or better in all classes• 80% Minimum in all required ELI courses
1-Semester	•	•	•	28/37			80	6.5	176	120		
Business Administration [MBA concentrations In Finance, Health Services, Management Information Systems, Marketing] [MPH/MBA Joint Program with MBA]												
2-Semester	•	•	•	24/36	2.5	4-year undergraduate degree or equivalent No work experience required	65	5.5	169	95	3.0	<ul style="list-style-type: none">• No W or I grade in a class• Grade of B or better in all classes• 80% Minimum in all required ELI courses
1-Semester	•	•	•	27/36			80	6.5	176	120		
Civil Engineering [MSCE specializations in Environmental Engineering; Structural Engineering and Structural Mechanics; Transportation Engineering]												
2-Semester	•	•	•	21/33	2.5	4-year undergraduate engineering degree in civil, environmental, mechanical, structural, transportation or related field	65	5.5	169	95	3.0	<ul style="list-style-type: none">• No W or I grade in a class• Grade of B or better in all classes• 80% Minimum in all required ELI courses• 3.25 GPA in all engineering courses
1-Semester	•	•	•	24/33			80	6.5	176	120		
Computer Science												
2-Semester	•	•	•	18/30	2.5	4-year undergraduate degree or equivalent in computer science, computer engineering, electrical engineering, mathematics or related field	65	5.5	169	95	3.0	<ul style="list-style-type: none">• No W or I grade in a class• Grade of B or better in all classes• 80% Minimum in all required ELI courses
1-Semester	•	•	•	21/30			80	6.5	176	120		
Computer Science (Non-Background)												
3-Semester	•	•		26-27/30	2.5	4-year undergraduate degree or equivalent	65	5.5	169	95	3.0	<ul style="list-style-type: none">• No grades below C• 80% Minimum in all required ELI courses• No W or I grade in a class

Entry and progression requirements are subject to change and may vary by program.

Graduate Pathway Programs (continued)

* Estimated credits remaining after Pathway/Total credit hours needed to complete degree.

Semester	Start Dates			Credits*	Entry Requirements						Progression Requirements All GPAs are minimum cumulative	
	Fall	Spring	Summer		GPA	Undergraduate Degree	TOEFL iBT	IELTS	IELA	Duolingo	GPA	Other
Cyber Security												
2-Semester	•	•	•	18/30	2.5	4-year undergraduate degree or equivalent in Computer Science or similar	65	5.5	169	95	3.0	• Grade of B or better in all classes • 80% Minimum in all required ELI courses
1-Semester	•	•	•	21/30			80	6.5	176	120		
Cyber Security (Non-Background Program)												
3-Semester	•	•		26-27/30	2.5	4-year undergraduate degree or equivalent	65	5.5	169	95	3.0	• Grade of B or better in all classes • 80% Minimum in all required ELI courses
Data Science												
2-Semester	•	•	•	18/30	2.5	• 4-year undergraduate degree or equivalent • Previous Coursework Required: 2 semesters of Calculus (Differential and Integral), Introduction to Computer Science in Python, Object Oriented Programming, Algorithms and Data Structures	65	5.5	169	95	3.0	• No W or I grade in a class • Grade of B or better in all classes • 80% Minimum in all required ELI courses
1-Semester	•	•	•	21/30			80	6.5	176	120		
Data Science (Non-Background Program)												
3-Semester	•	•		26-27/30	2.5	4-year undergraduate degree or equivalent	65	5.5	169	95	3.0	• No grades below C • 80% Minimum in all required ELI courses
Educational Studies [MA concentration in Early Childhood Education][MAEd concentrations in Early Childhood Education; Elementary Education; Secondary Education]												
2-Semester	•	•		27/39	2.5	4-year undergraduate degree or equivalent	65 (16+ minimum subscores)	5.5 (5.5 minimum subscores)	169	95	3.0	• 80% Minimum in all required ELI courses • Statement of Goals • Résumé
1-Semester	•	•		30/39			80 (20 subscores in 3 sections)	6.5 (6.0 subscores in 3 sections)	176	120		
Electrical and Computer Engineering												
2-Semester	•	•	•	21/33	2.5	4-year undergraduate engineering degree in computer, electrical, electronic or computer science or related field	65	5.5	169	95	3.0 ³	• No W or I grade in a class • Grade of B or better in all classes • 80% Minimum in all required ELI courses ³ 3.25 GPA in all engineering courses
1-Semester	•	•	•	24/33			80	6.5	176	120		
Engineering Management [MSEM concentrations in Advanced Manufacturing; Biomaterials and Tissue Engineering; Design and Commercialization; Environmental Engineering; Software Engineering; Vehicle and Robotics Engineering]												
2-Semester	•	•	•	21/33	2.5	4-year undergraduate degree (or equivalent) in Engineering, Computer Sciences, Mathematics, General Sciences or similar (Physics, Chemistry, etc.)	65	5.5	169	95	3.0	• No W or I grade in a class • No grades below C • 80% Minimum in all required ELI courses • No W or I grade in a class • Grade of B or better in all classes • 80% Minimum in all required ELI courses
1-Semester	•	•	•	24/33			80	6.5	176	120		
Materials Engineering												
2-Semester	•	•	•	21/33	2.5	4-year undergraduate engineering degree in composites, manufacturing, materials, polymers or chemistry, composites, physics or related field	65	5.5	169	95	3.0	• No W or I grade in a class • Grade of B or better in all classes • 80% Minimum in all required ELI courses • 3.25 GPA in all engineering courses
1-Semester	•	•	•	24/33			80	6.5	176	120		
MBA/MPH Dual-Degree												
2-Semester	•	•	•	47/60	2.5	• 4 year undergraduate degree or equivalent. • No work experience required	65	5.5	169	95	3.0	• No W or I grade in a class • Grade of B or better in all classes • 80% Minimum in all required ELI courses
1-Semester	•	•	•	50/60			80	6.5	176	120		
Mechanical Engineering												
2-Semester	•	•	•	21/33	2.5	4-year undergraduate engineering degree in mechanical, mechanics, structural or related field	65	5.5	169	95	3.0	• No W or I grade in a class • Grade of B or better in all classes • 80% Minimum in all required ELI courses • 3.25 GPA in all engineering courses
1-Semester	•	•	•	24/33			80	6.5	176	120		
Multidisciplinary Biomedical Science												
2-Semester	•	•	•	16/30	2.5	4-year undergraduate degree or equivalent Must have two of the following courses: Biochemistry, Cell Biology, Genetics, Developmental, Biology, or Organic Chemistry	65	5.5	169	95	3.0	• No W or I grade in a class • Grade of B or better in all classes • 80% Minimum in all required ELI courses
1-Semester	•	•	•	20/30			80	6.5	176	120		
Public Administration												
2-Semester	•	•	•	27/39	2.5	4-year undergraduate degree or equivalent	65	5.5	169	95	3.0	• Grade of B or better in all classes • 80% Minimum in all required ELI courses
1-Semester	•	•	•	30/39			80	6.5	176	120		
Public Health [MPH concentrations in Healthcare Organization and Policy; Health Behavior, Epidemiology, Environmental Occupational Health; Population Health; Maternal and Child Health Policy and Leadership] [MPH/MBA Joint Program with MBA]												
2-Semester	•	•		29/42	2.5	4-year undergraduate degree or equivalent	65	5.5	169	95	3.0	• No W or I grade in a class • Grade of B or better in all classes • 80% Minimum in all required ELI courses
1-Semester	•	•		32/42			80	6.5	176	120		
TESOL												
2-Semester	•	•		27/39	2.5	4-year undergraduate degree or equivalent	65 (16+ subscores)	5.5 (5.5 minimum subscores)	169	95	3.0	• No W or I grade in a class • Grade of B or better in all classes • 80% Minimum in all required ELI courses • Statement of goals • Résumé
1-Semester	•	•		30/39			80 (20 subscores in 3 sections)	6.5 (6.0 subscores in 3 sections)	176	120		

Entry and progression requirements are subject to change and may vary by program.

Integrated Master’s Program (IMP)

* Estimated credits remaining after Pathway/Total credit hours needed to complete degree.

Semester	Start Dates			Credits*	Entry Requirements		TOEFL iBT	IELTS	IELA	Duolingo
	Fall	Spring	Summer		GPA	Undergraduate Degree				
Biotechnology										
1-Semester	•	•	•	28/37	2.8	4-year undergraduate degree in biochemistry, biology, biotechnology, chemistry, engineering, mathematics, physics, psychology, sociology	80	6.5	176	120
Business Administration [MBA concentrations in Entrepreneurship; Finance; Health Services; Management Information Systems; Marketing] [MPH/MBA Joint Program with MBA]										
1-Semester	•	•	•	27/36	2.8	<ul style="list-style-type: none">4-year undergraduate degree or equivalentNo work experience required	80	6.5	176	120
Civil Engineering [MSCE specializations in Environmental Engineering; Structural Engineering/Structural Mechanics; Transportation Engineering]										
1-Semester	•	•	•	24/33	2.8	4-year undergraduate engineering degree in civil, environmental, mechanical, structural, transportation or related field	80	6.5	176	120
Computer Science										
1-Semester	•	•	•	21/30	2.8	4-year undergraduate degree or equivalent in computer science, computer engineering, electrical engineering, mathematics or related field	80	6.5	176	120
Cyber Security										
1-Semester	•	•		21/30	2.8	4-year undergraduate degree or equivalent in Computer Science or similar	80	6.5	176	120
Data Science										
1-Semester	•	•	•	21/30	2.8	<ul style="list-style-type: none">4-year undergraduate degree or equivalentPrevious Coursework Required: 2 semesters of Calculus (Differential and Integral), Introduction to Computer Science in Python, Object Oriented Programming, Algorithms and Data Structures	80	6.5	176	120
Educational Studies [MA concentration in Early Childhood Education][MAEd concentrations in Early Childhood Education; Elementary Education; Secondary Education]										
1-Semester	•	•		30/39	2.8	4-year undergraduate degree or equivalent	80 (20 subscores in 3 sections)	6.5 (6.0 subscores in 3 sections)	176	120
Electrical and Computer Engineering										
1-Semester	•	•	•	24/33	2.8	4-year undergraduate engineering degree in computer, electrical, electronic or computer science or related field	80	6.5	176	120
Engineering Management [MSEM concentrations in Advanced Manufacturing; Biomaterials and Tissue Engineering; Design and Commercialization; Environmental Engineering; Software Engineering; Vehicle and Robotics Engineering]										
1-Semester	•	•	•	24/33	2.8	4-year undergraduate degree (or equivalent) in Engineering, Computer Sciences, Mathematics, General Sciences or similar (Physics, Chemistry, etc.)	80	6.5	176	120
Materials Engineering										
1-Semester	•	•	•	24/33	2.8	4-year undergraduate engineering degree in composites, manufacturing, materials, polymers or chemistry, composites, physics or related field	80	6.5	176	120
Mechanical Engineering										
1-Semester	•	•	•	24/33	2.8	4-year undergraduate engineering degree in mechanical, mechanics, structural or related field	80	6.5	176	120
Multidisciplinary Biomedical Science										
1-Semester	•	•	•	21/30	2.8	<ul style="list-style-type: none">4-year undergraduate degree or equivalentMust have two of the following courses: Biochemistry, Cell Biology, Genetics, Developmental, Biology, or Organic Chemistry	80	6.5	176	120
Public Health [MPH concentrations in Healthcare Organization and Policy; Health Behavior; Epidemiology, Environmental and Occupational Health; Population Health; Maternal and Child Health Policy and Leadership] [MPH/MBA Joint Program with MBA]										
1-Semester	•	•		33/42	2.8	4-year undergraduate degree or equivalent	80	6.5	176	120
TESOL										
1-Semester	•	•		30/39	2.8	4-year undergraduate degree or equivalent	80	6.5	176	120

Entry and progression requirements are subject to change and may vary by program.

ACADEMIC ENGLISH

The Academic English program at UAB prepares you for university study in the US. You will receive high-quality English language instruction and the academic skills to succeed at UAB.

Key Program Facts
Program length is 15 weeks, and Summer is 14 weeks; both include 1 week of orientation.
High school diploma required
No English language requirement; students will be assessed and placed upon arrival.
Minimum age 17
5 levels of instruction from high beginner to advanced
20 hours of instruction per week

Progression Requirements
International Year One 3-Semester Pathway Completion of AE Level 3
International Year One 2-Semester Pathway Completion of AE Level 4
Graduate 2-Semester Pathway Completion of AE Level 4
Direct Graduate Admission Completion of AE Level 5, although individual program entry requirements may vary

Start Dates for Academic English		
Fall 2021	Spring 2022	Summer 2022
Aug 17, 2021 Oct 6, 2021	Jan 5, 2022	May 4, 2022

What You Will Learn

- Understand US values in an academic setting.
- Present spoken and written ideas accurately and effectively in English.
- Write research papers with proper use of citations and references.
- Read, understand and critically evaluate academic texts.
- Understand and use vocabulary common to academic disciplines.
- Take useful and accurate notes in academic lectures and presentations.

Content-Based Instruction

Students will explore American culture, contemporary American issues, and other topics that will build the background knowledge and the study skills students need for success in their university courses.

University and Community Engagement

Academic English students begin making connections with Americans right away. The Language Partners Program matches American students with Academic English students for conversation practice and cultural exchange. Students in the TESOL program or tutors with a MA-TESOL degree are available to help Academic English students practice their speaking, writing and study skills.

Estimated Academic English (AE) Level Based on Test Scores
All students take a placement test during orientation to determine their AE level. The table below shows what your estimated level of AE based on your standardized test scores.

AE Levels	TOEFL iBT	IELTS	Duolingo
Level 2	30-40	3.0-3.5	65-70
Level 3	41-51	4.0-4.5	75-80
Level 4	52-64	5.0-5.5	85-90
Level 5	65-80	5.5-6.5	95-110

SCHOLARSHIPS



Find out more about scholarships www.intostudy.com/uab/scholarships

Undergraduate International Scholarships – First-Year Students			
Scholarship	Award/Benefits	Requirements	Application Deadlines
INTO UAB Regional Scholarship	Up to \$9,000/year	<ul style="list-style-type: none">Admission to program300-400 word personal statement may be required for some regionsScholarship interview may be required for some regionsAmount subject to change. Limited awards at maximum value	First come, first served
UAB International Scholarship	\$7,500/year	<ul style="list-style-type: none">Minimum GPA of 3.0First-year, full-time, degree-seeking students only (no postsecondary work)Completed high school or secondary school outside of the USCurrently live outside of the United StatesMust be accepted prior to May 1 for the August intake (November 1 for the January intake)Students with governmental scholarships or other external support are ineligible for this awardAnticipate holding an F-1 visa	First come, first served
UAB IB Scholarship	\$1,000- \$2,500/year	<ul style="list-style-type: none">Fully admitted to UAB as a first-year undergraduate studentSubmit scholarship application by March 1IB Diploma with a score of 24 or higherEligible candidates will be awarded a \$1,000 scholarship that will be automatically upgraded to \$2,500 after final IB scores are received	March 1
UAB Continuing Success Scholarship	\$3,000/year	<ul style="list-style-type: none">Admitted to a degree-seeking program at UAB after successfully completing International Year One and meeting all progression requirementsStudent must matriculate to UAB the academic term immediately following International Year One completionStudents completing the International Year One at the end of Spring semester must matriculate by the Fall semesterCumulative GPA must be achieved and maintained throughout International Year OneScholarship is split into \$1,500 per semester for two semesters (Fall and Spring)	
ACT & GPA Based Scholarships	\$7,500 - \$18,000/year	<ul style="list-style-type: none">Must submit admission application and all required documentation by May 1 of senior year in high schoolEntering freshmen who have their admission documents postmarked by that date are automatically considered for ACT & GPA-based scholarshipsStudent's February ACT and March SAT test scores from senior year will be the last scores considered for scholarship purposesThe examined GPA will be the cumulative GPA at the time of admissionRequired Test Score and GPA vary, visit https://www.uab.edu/students/paying-for-college/scholarships/act-gpa-based-scholarships-out-of-state	First come, first served

Scholarships amounts and eligibility are subject to change. Limited awards at maximum value. For more information on UAB's international student scholarships, please visit www.uab.edu/students/paying-for-college/scholarships/international



ESTIMATED COST OF ATTENDANCE



There are two main semesters per academic year (Fall, Spring) that are 15 weeks for AE students and 16 weeks for Pathway students, including orientation. A shorter Summer semester is 14 weeks for Academic English students and 15 weeks for Pathway students, including orientation.

Undergraduate Programs

	International Year One or Undergraduate Transfer Program			Undergraduate Direct	
Program Length	1 Semester	2 Semesters	3 Semesters	1 Semester	2 Semesters
TUITION AND FEES	\$17,470	\$30,390	\$39,190	\$14,520	\$29,040
Housing and Meals*	\$8,150	\$16,300	\$24,450	\$6,630	\$13,260
Books and Supplies	\$625	\$1,250	\$1,875	\$625	\$1,250
Insurance	\$1,090	\$2,860	\$2,860	\$930	\$2,430
Other**	\$500	\$1,000	\$1,500	\$500	\$1,000
LIVING EXPENSES	\$10,365	\$21,410	\$30,685	\$8,685	\$17,940
TOTAL EXPENSES	\$27,835	\$51,800	\$69,875	\$23,205	\$46,980

Graduate Programs

	Graduate Pathway		Graduate Pathway (Non-Background)	Integrated Master's Program	Graduate Direct	
Program Length	1 Semester	2 Semesters	3 Semesters	1 Semester	1 Semester	2 Semesters
TUITION AND FEES	\$16,660	\$28,970	\$40,040	\$16,660	\$10,580	\$21,160
Housing and Meals*	\$4,970	\$9,940	\$14,910	\$4,970	\$8,900	\$17,800
Books and Supplies	\$725	\$1,450	\$2,175	\$725	\$725	\$1,450
Insurance	\$1,090	\$2,860	\$2,860	\$1,090	\$930	\$2,430
Other**	\$500	\$1,000	\$1,500	\$500	\$500	\$1,000
LIVING EXPENSES	\$7,285	\$15,250	\$21,445	\$7,285	\$11,055	\$22,680
TOTAL EXPENSES	\$23,945	\$44,220	\$61,485	\$23,945	\$21,635	\$43,840

Academic English

	Academic English
Program Length	1 Semester
TUITION AND FEES	\$7,950
Housing and Meals*	\$8,150
Books and Supplies	\$625
Insurance	\$1,090
Other**	\$500
LIVING EXPENSES	\$10,365
TOTAL EXPENSES	\$18,315

* Living Expenses are based on estimated costs and may vary depending on housing and meal plans selected. Living expenses includes \$300 meal plan per semester.
**Other costs include personal and miscellaneous expenses e.g. laundry, toiletries, healthcare, clothing, transportation and entertainment and will vary depending on personal preference.

All prices are estimated from 2020-21 and are subject to change. Please visit www.intostudy.com/uab/costs for exact pricing.

For details about Terms and Conditions, Country Scales and English Waivers, visit www.intostudy.com/uab/terms



HOW TO APPLY

Choose from two easy ways to apply

1 Apply via your local
INTO educational counselor

2 Apply online
Complete our online application form:

INTO UAB Programs:
apply.intostudy.com/uab

Direct Undergraduate:
uab.apply.intoglobal.com/login

Direct Graduate:
For graduate programs in biotechnology, business administration, data science, cyber security, computer science, engineering management, mechanical/materials/civil/electrical and computer engineering, multidisciplinary biomedical science, public health
uab.apply.intoglobal.com/login

All other graduate programs:
www.uab.edu/graduate/students



UAB THE UNIVERSITY OF
ALABAMA AT BIRMINGHAM

INTO The University of Alabama at Birmingham

Mervyn H. Sterne Library, Floor 2
917 13th Street South
Birmingham, AL 35294
USA

T: +1 205 934 4686


F: +1 205 934 4685

E: INTOadmissions@uab.edu

www.intostudy.com/uab

Find us on:

 facebook.com/INTOBlazers

 instagram.com/into_UAB

 twitter.com/INTO_UAB

 myin.to/uabyoutube

Chat online

with our students!



www.intostudy.com/chat-uab



WeChat



We also offer online programs, for more information contact your INTO Regional Representative or Education Counselor.

INTO

Through innovative partnerships with leading universities, we expand opportunities for higher education, ensuring success and transforming the lives of our students and staff.

INTO GIVING

Working across the globe, INTO Giving supports projects that increase access to education and improve the quality of teaching and learning. For more information, visit www.into-giving.com

Discover more online

For counselors:
partnerportal.intoglobal.com/uab

For students:
www.intostudy.com/uab

Connect with us



Education counselor's stamp