

INTO 

MANCHESTER

IN PARTNERSHIP WITH THE UNIVERSITY OF MANCHESTER

MANCHESTER
1824

The University of Manchester

**RUSSELL
GROUP**

UNIVERSITY OF MANCHESTER

OXFORD RD

**INTO UNIVERSITY
PATHWAYS FOR
INTERNATIONAL
STUDENTS
2021-22**



LEARN WITHOUT BOUNDARIES



=27th

in the world and
6th in the UK
(QS World University Rankings 2021)

No.1

targeted university by top
employers in the UK
(High Fliers Research 2020)

25

Nobel Prize winners have
studied or worked at The
University of Manchester

Welcome to INTO Manchester, your pathway to an internationally-recognised degree from The University of Manchester. We give international students like you the opportunity to study at a historic and highly-ranked university.

At INTO Manchester, you'll study a specialist programme designed exclusively for international students and tailored to the requirements of the University. We'll help you improve your English language skills and adjust to life as a student in the UK, so when you successfully complete your pathway and meet the required grades, you can confidently progress to your degree at The University of Manchester.

You'll complete your course at our INTO Study Centre in the student-friendly city of Manchester – and with access to many key facilities on campus, you'll soon be ready to join The University of Manchester.

Choosing to study abroad is a big decision, but at INTO Manchester, we'll give you everything you need to succeed at university and beyond.

Choose #INTOManchester and open up a lifetime of opportunities.



THE UNIVERSITY OF MANCHESTER'S GLOBALLY-RANKED SUBJECT AREAS

10th

Pharmacy and
Pharmacology*

20th

Sociology*

21st

Accounting and Finance*

22nd

Chemical Engineering*

=23rd

Chemistry*

27th

Engineering - Mechanical,
Aeronautical & Manufacturing*

28th

Materials Science*

30th

Business and Management*

45th

Law**

* QS World University Rankings by Subject 2020
**Times Higher Education World University
Rankings by Subject 2020

ABOUT THE UNIVERSITY



The University of Manchester is among the top universities worldwide. Choose to study here and you'll become part of one of the UK's biggest student communities, making use of world-class facilities housed among a mixture of historic Victorian and modern buildings.

Educational excellence

Prepare to study at one of the most respected institutions in the world. The University of Manchester is recognised for its high-quality education, research and academic achievements dating back almost 200 years.

This prestigious university is consistently in the top 30 in world rankings, and is currently ranked 27th in the world*.

Pioneering innovation

From the birth of the modern computer to the isolation of graphene, world-changing innovation is at the heart of the University. This elite Russell Group university is ranked 5th in the UK for 'research power'**, with its research covering one of the largest ranges of academic areas among UK universities.

At The University of Manchester, you can:

- be taught by staff with strong links to industry
- have the chance to undertake work experience
- contribute to research and studies in your subject area
- develop skills and knowledge that will boost employability

Join a global network of professionals

Many of the almost 500,000 alumni have top positions in business, politics, industry and the arts, across more than 190 countries around the world. With such a high calibre of real-world learning and an international focus, it's no wonder that 25 Nobel Prize winners have studied or worked at The University of Manchester throughout its impressive history.

Create your future

The University of Manchester also gives you the opportunity to boost your employability skills and set yourself up for future success. You can develop career-focused skills through:

- 'Stellify' – the University's unique extracurricular scheme which involves volunteering, activities and career development opportunities
- Manchester Leadership Programme
- the University's comprehensive Careers Service

These services help The University of Manchester produce some of the most employable graduates around the world. You'll soon discover why it's the number one targeted university by top employers in the UK†.

* QS World University Rankings 2020

** Research Excellence Framework 2014

† High Fliers Research 2020



"Successful completion of the INTO Manchester International Foundation can lead to a wide range of undergraduate courses at The University of Manchester. This includes various courses in Business and Management, Law, Science, Engineering, Biosciences, Pharmacy and Psychology. I look forward to welcoming you here in the future."

Fiona Brown,
Head of International Recruitment,
The University of Manchester

UNIVERSITY FACILITIES

Whatever you choose to study at The University of Manchester after your pathway programme at INTO Manchester, you'll benefit from a £1.75 billion investment in cutting-edge facilities and equipment. One of the biggest investments ever seen at a UK university!

Inspiring learning spaces

You'll have access to some excellent subject-specific facilities as a student at The University of Manchester. Depending on your chosen degree, this could include:

- **Alliance Manchester Business School** – home to the Behavioural Research Laboratory and large-scale, interactive Data Visualisation Observatory
- **Manchester Engineering Campus Development** – the brand new Engineering building will be the single largest home for Engineering in the UK (due to open in 2022)
- **Specialist facilities** – including a moot court (Law), MRI scanners (Biology, Medicine and Health) and a chemical manufacturing laboratory (Science and Engineering)

Staying healthy

Students are entitled to discounted rates at the University's sports facilities, which includes three fitness suites, two 50-metre swimming pools and many indoor courts and outdoor pitches close to campus.

The Athletic Union is made up of more than 40 sports clubs, so you also have the chance to represent the University. Other organised activities include campus sports leagues, hall sport sessions and health and fitness classes.

The city offers even more sports facilities for you to enjoy. Sportcity includes an indoor tennis centre, an athletics centre and Manchester Velodrome, while the Chill Factor is the UK's longest indoor ski slope. It's all just a short distance away!



Here are some of the facilities you'll have access to as an INTO Manchester student:



Main Library
(one of the best-resourced academic libraries in the UK)



Armitage and Sugden Sports Centres
(student discount available)



Manchester Aquatics Centre
(student discount available)



Campus Cafés and Restaurants



DISCOVER MANCHESTER

A diverse mix of music, shopping, sport and a buzzing social scene, all wrapped up in one student-focused city. Get ready to explore the UK's capital of the North and one of the best cities in the world.

(Time Out 'The 48 Best Cities in the World' 2019)

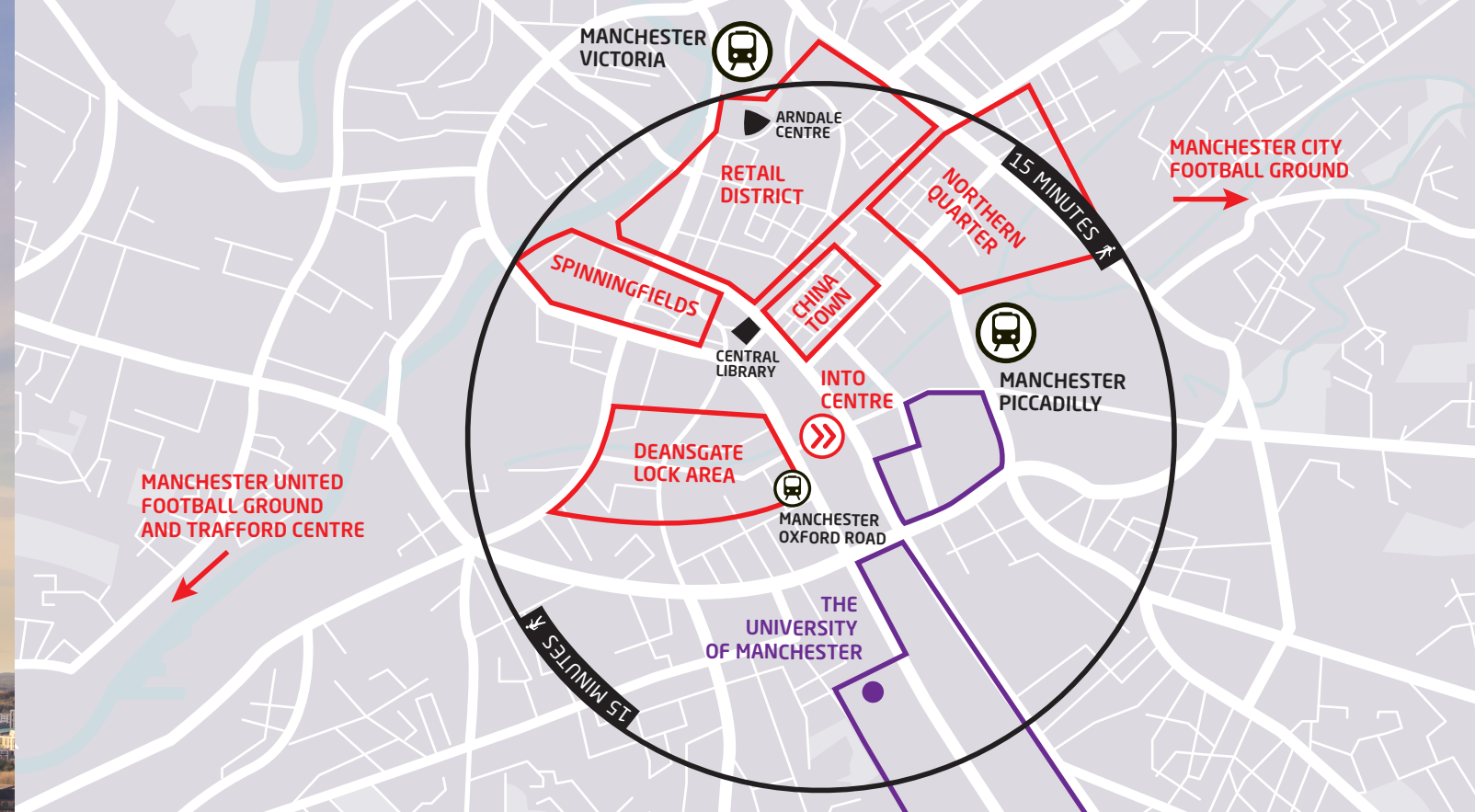


Top UK city to live in*

* The Economist Intelligence Unit
Global Liveability Report 2015-19



Credit: Marketing Manchester



Culture and creativity

When you live in Manchester, you'll be immersed in a lively world of music, art and fashion. You'll also have access to a bustling social calendar packed with festivals, all-day events and free activities. The city has more than 30 museums and art galleries, including:

- The Whitworth
- Manchester Museum
- Manchester Art Gallery
- Centre for Chinese Contemporary Art
- National Football Museum
- Museum of Science and Industry

The Portico, Chetham and Manchester Central Libraries are also must-sees in a city designated a **UNESCO City of Literature**.

Gourmet to everyday

With more than 300 restaurants, there's an exciting range of quality, modern British and international cuisine available, making it easy to find foods from around the world. From fine dining in **Spinningfields** to street food at Maker's Market, you'll find options to suit your mood and budget. **Deansgate** offers everything from tapas to traditional British food, while the cool cafés of the **Northern Quarter** are a favourite with locals.

Manchester's **Chinatown** is the second largest in Britain and has many Asian restaurants and supermarkets. There are also over 70 restaurants and shops in **Rusholme**, offering South Asian and Middle Eastern cuisine and produce. You'll never run out of exciting food options in Manchester!

An iconic sporting city

Manchester is home to two of the biggest names in sport: Manchester United and Manchester City. Manchester United's ground, **Old Trafford**, is the largest club ground in Britain, while Manchester City is based at the striking **Etihad Stadium**. Fancy getting involved? The city offers a range of state-of-the-art facilities from indoor ski-slopes to velodromes. Sport is always at the heart of Manchester.

Getting out and about

Manchester is easy to get around on foot, by bus or by tram, and it's a great base to explore the UK – you can get to London in just two hours by train and to the Lake District in just over an hour. Manchester Airport also has flights to 200+ destinations.

Credit: Marketing Manchester

LIFE AT THE INTO CENTRE

Are you ready to live and learn in one of the UK's biggest and best student cities? With modern facilities in a historic building, an exciting programme of activities and a team of friendly staff, INTO Manchester has it all!

Your Study Centre

The INTO Manchester Centre offers you the chance to study in one of the most exciting and diverse cities in the world. Located in Bridgewater House, an impressive Edwardian era building, the Centre is right in the heart of bustling Manchester. Most of your classes will take place here, and you'll find everything you need to study and socialise in one location.

Our academic programmes here are taught in a similar way to what you'll experience at university, so that you'll be ready when you progress. INTO Manchester's learning Centre includes:

- 45 classrooms featuring digital whiteboards
- well-equipped computing suites
- free Wi-Fi and internet access throughout
- 24/7 access to our virtual learning environment to download resources
- a Learning Resource Centre with a wide range of online journals, books and excellent study materials
- silent study areas

If you want a break between classes, you can relax in the break-out spaces and play table football with friends, eat in the communal cafeteria on-site, or head out to the many cafés and shops on your doorstep. You'll soon feel right at home!

Supporting you

Studying in another country can be a big adjustment, and we're here to help you. Our friendly Student Services team will help you with accommodation and visa support, and the orientation programme in your first week will cover everything from opening a bank account to getting around the city.

Our experienced teaching staff will help you to understand the UK higher education system. We operate an open-door policy for most academic staff rooms and hold optional revision classes for each subject during examination periods. You'll also be allocated a Personal Tutor upon arrival.

Your safety is our priority

There's a 24-hour telephone helpline if you need to speak to someone out of office hours. If you're under 18, we offer extra support that includes airport pickup and checking on you each day at the student residence. You'll also be given a dedicated person to contact to ensure your wellbeing and receive a copy of our code of conduct, which you must follow; especially outside of class when you'll be unsupervised. For more information, please visit: www.intostudy.com/manchester/terms



"We can't wait to welcome you to the dynamic city of Manchester and help you settle into life in the UK. We have a team of experienced staff to help you with both academic matters and day-to-day living so you can concentrate on your studies and make the most of your time with us."

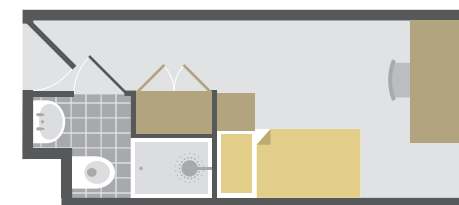
Dawn Abbott,
Centre Director

YOUR HOME FROM HOME

INTO Manchester's safe student accommodation options enable you to live as part of a vibrant student community, or you can immerse yourself in British family life with a homestay experience. You decide!

En suite student residences

Just a short walk from the INTO Centre and close to The University of Manchester, your accommodation has a central location which means you'll be close to many restaurants, cafés and shops.



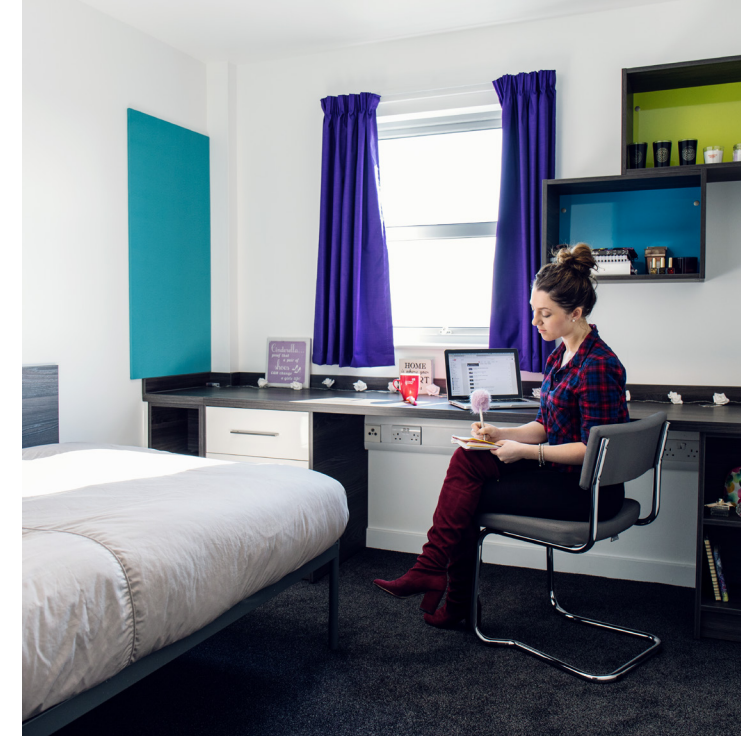
Example room layout

- En suite bathroom
- Communal areas
- Laundry facilities
- Accepts under 18s
- 24/7 staff
- Wi-Fi

For full details of our accommodation options, visit:

www.intostudy.com/manchester/accommodation

INTO Manchester aims to provide the accommodation requested. However, there may be occasions when INTO Manchester is unable to provide the requested accommodation and reserves the right to offer an alternative type of accommodation instead. The price for any alternative accommodation may differ and will be confirmed to students at the time of their offer.



Supporting you

In all the residences, you'll find staff available 24/7 to offer support, and we'll also provide you with a 24-hour emergency helpline telephone number. If you're under 18 and living in INTO managed accommodation, we offer extra support and will check in on you each day at the student residence where you live.

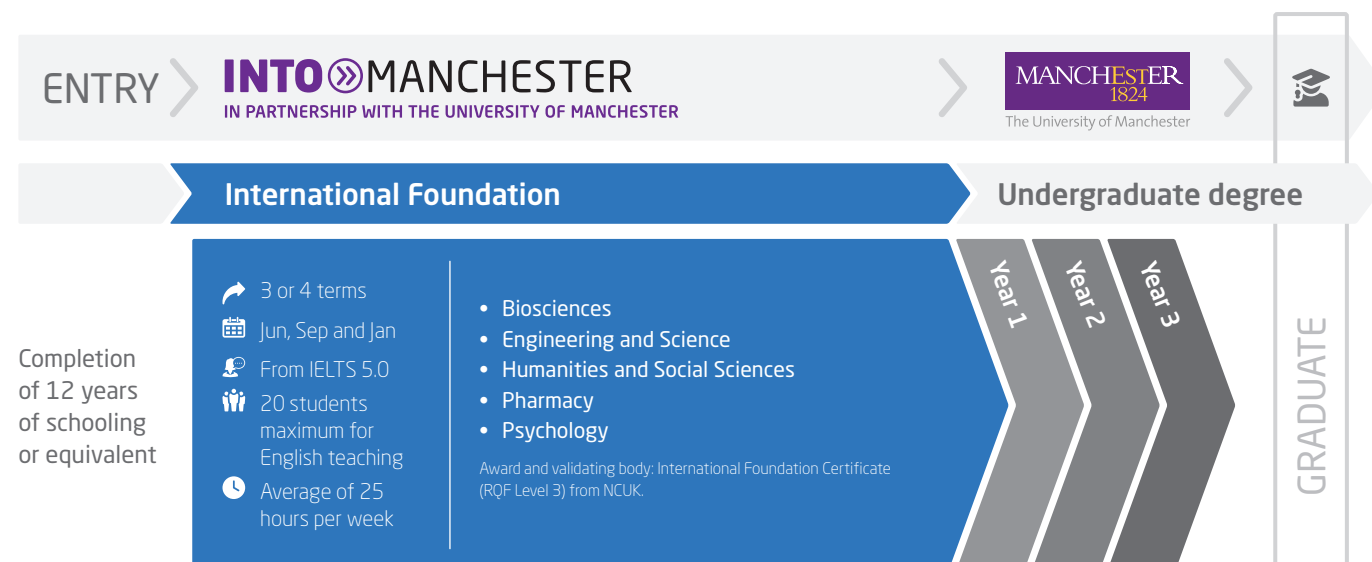
Homestay

This is a unique opportunity to experience British life and culture first hand. You'll have a private room in a carefully selected host's home, sharing mealtimes and living spaces.



Choosing your course

Prepare for your university degree with our tailored, academic pathway programmes. You'll benefit from university-style teaching for subject-based modules and high academic standards. Then, when it comes to progressing to your chosen degree, we'll support you with your university application.



Please note that course length and start month options may vary depending on the pathway chosen. Please visit www.intostudy.com/manchester/courses for full information.



"The style and content of the course fit my expectations of what a good transition programme would be. The content of each subject and assignments given in class are a big help in developing the particular skills needed to succeed in university."

Tisya, Indonesia
Completed an International Foundation in Humanities and Social Sciences and progressed to BSc (Hons) International Business, Finance and Economics at The University of Manchester

"INTO Manchester enabled me to experience entire independence, and learn self-control and time management."

Alina, Russia
Completed an International Foundation in Engineering and Science and progressed to BSc (Hons) Pharmacology at The University of Manchester



International Foundation

Biosciences - FB

- > Learn to write lab reports and understand scientific data.
- > Gain practical experience through laboratory work.
- > Specialist progression degrees include Genetics, Immunology, Neuroscience and Zoology.

What will I study?

Biology
Chemistry
Critical Thinking*
English for Academic Purposes and Study Skills
Information Communication Technologies (ICT)*
Mathematics

* Compulsory but non credit bearing

Progress to **1 of 20+** degrees. Find out more at www.intostudy.com/manchester/FB

Engineering and Science - FES

- > Visit the schools within the University faculty and gain an insight into the different degree programmes.
- > Gain practical experience in university-style labs.
- > Specialist progression degrees include Artificial Intelligence, Mechatronic Engineering and Physics with Astrophysics.

What will I study?

Critical Thinking*
English for Academic Purposes and Study Skills
Information Communication Technologies (ICT)*

3 out of 5**:


Biology
Chemistry
Further Mathematics
Mathematics
Physics

* Compulsory but non credit bearing

** Please note that the choice of subjects will depend on your chosen degree programme. Some subject combinations may not be available.

Progress to **1 of 70+** degrees. Find out more at www.intostudy.com/manchester/FES

Prepare to progress to a degree at The University of Manchester:

 =23rd


in the world for
Chemistry

(QS World University Rankings by Subject 2020)

 28th

in the world for
Materials Science

(QS World University Rankings by Subject 2020)

 =27th

in the world for
Mechanical Engineering

(QS World University Rankings by Subject 2020)

 31st

in the world for Electrical
and Electronic Engineering

(QS World University Rankings by Subject 2020)

Progress to Year 1 of an
undergraduate degree at
The University of Manchester

Start date

3 term: Sep or Jan

English language entry requirements*

3 term: UKVI IELTS 6.0 (with a minimum of 6.0 in all subskills) or equivalent

Age requirement

16 years and above**

Note: progression to any degree from the Biosciences pathway is subject to interview.

Start date

3 term: Sep or Jan
4 term: Jun or Sep

English language entry requirements*

3 term: UKVI IELTS 5.5 (with a minimum of 5.5 in writing) or equivalent

4 term: UKVI IELTS 5.0 (with a minimum of 5.0 in writing and no less than 4.5 in any subskill) or equivalent

Age requirement

16 years and above**

* If you do not meet the minimum English language requirements, you should apply for our Academic English course. See page 18 for more information.

** All students commencing courses on a published September start date must be 17 years old by 31 December of that calendar year. For all other start dates, students must be 17 years old on the published start date of the programme.

Progress to Year 1 of an undergraduate degree at The University of Manchester

Start date
3 term: Sep or Jan
4 term: Jun or Sep

English language entry requirements*
3 term: UKVI IELTS 5.5 (with a minimum of 5.5 in writing) or equivalent
4 term: UKVI IELTS 5.0 (with a minimum of 5.0 in writing and no less than 4.5 in any subskill) or equivalent

Age requirement
16 years and above**

* If you do not meet the minimum English language requirements, you should apply for our Academic English course. See page 18 for more information.
** All students commencing courses on a published September start date must be 17 years old by 31 December of that calendar year. For all other start dates, students must be 17 years old on the published start date of the programme.

Prepare to progress to a degree at The University of Manchester:

 **20th**
in the world for Sociology
(QS World University Rankings by Subject 2020)

 **21st**
in the world for Accounting and Finance
(QS World University Rankings by Subject 2020)

 **30th**
in the world for Business and Management
(QS World University Rankings by Subject 2020)

International Foundation

Humanities and Social Sciences - FHSS

- › Attend weekly drop-in sessions with a Link Tutor from the University.
- › Practise professional presentation skills through assessed group work.
- › Build confidence constructing academic arguments, learn how to write effective essays, and correctly research and reference academic sources.
- › Specialist progression degrees include Accounting and Finance, International Relations, and Management.

What will I study?
Critical Thinking*
English for Academic Purposes and Study Skills
Information Communication Technologies (ICT)*

3 out of 4:**
Business Studies
Economics
Mathematics
Government and Politics

* Compulsory but non credit bearing
** Please note that the choice of subjects will depend on your chosen degree programme. Some subject combinations may not be available. Modules offered are subject to change.

Progress to **1 of 60+** degrees. Find out more at www.intostudy.com/manchester/FHSS

“The knowledge that I gained is really necessary for my university life. Through study with INTO Manchester, I found University much easier than other students who haven’t completed a Foundation. Studying at INTO made me more confident in my English.”

Qinyu, China
Completed an International Foundation in Humanities and Social Sciences and progressed to BSc (Hons) Economics at The University of Manchester



“The University have a lot of facilities for Aerospace, you can see that they have been running the course for a while and have everything a student could need - all the machines and a flight simulator. They’ve started moving the machines over from North Campus so I’ll benefit from experiencing both facilities; the old and the new.”

Samir, Mexico
Completed International Foundation in Engineering and Science and progressed to BEng (Hons) Aerospace Engineering

International Foundation

Pharmacy - FPH

- › Gain practical experience through laboratory work.
- › MPharm Pharmacy degree is accredited by the General Pharmaceutical Council.
- › Gain real life experience during your degree in pharmacy departments and wards.

What will I study?
Chemistry
Critical Thinking*
English for Academic Purposes and Study Skills
Information Communication Technologies (ICT)*

3 out of 4:**
Biology
Further Mathematics
Mathematics
Physics

* Compulsory but non credit bearing
** Please note that the choice of subjects will depend on your chosen degree programme. Some subject combinations may not be available.

Progress to **MPharm Pharmacy**. Find out more at www.intostudy.com/manchester/FPH

Psychology - FPS

- › Investigate the study of sleep, nonverbal behaviour, eye movements and decision-making through lab work.
- › BSc (Hons) Psychology is accredited for membership of the British Psychological Society.

What will I study?
Critical Thinking*
English for Academic Purposes and Study Skills
Information Communication Technologies (ICT)*

3 out of 8:**
Biology
Business Management
Chemistry
Economics
Further Mathematics
Mathematics
Physics
Politics

* Compulsory but non credit bearing
** Please note that the choice of subjects will depend on your chosen degree programme. Some subject combinations may not be available.

Progress to **BSc Psychology**. Find out more at www.intostudy.com/manchester/FPS

Progress to Year 1 of an undergraduate degree at The University of Manchester

Start date
3 term: Sep or Jan

English language entry requirements*
3 term: UKVI IELTS 6.0 (with a maximum of one subskill at 5.5 and all others at 6.0 or above) or equivalent

Age requirement
16 years and above**

Note: progression to any degree from the Pharmacy pathway is subject to interview.

Prepare to progress to a degree at The University of Manchester:

 **10th**
in the world for Pharmacy and Pharmacology
(QS World University Rankings by Subject 2020)


Start date
3 term: Sep or Jan

English language entry requirements*
3 term: UKVI IELTS 5.5 (with a minimum of 5.5 in writing) or equivalent

Age requirement
16 years and above**

* If you do not meet the minimum English language requirements you should apply for our Academic English course. See page 18 for more information.
** All students commencing courses on a published September start date must be 17 years old by 31 December of that calendar year. For all other start dates, students must be 17 years old on the published start date of the programme.

Prepare to progress to a degree at The University of Manchester:

 **=42nd**
in the world for Psychology
(QS World University Rankings by Subject 2020)

Progression degree overview table

There are more than 100 progression degree options at The University of Manchester. You can progress to any of these from one of our INTO Manchester pathway programmes. Below is a selection of some of the most popular. See pages 12–15 for more details on the pathways.

International Foundation progression

Degree	Pathway(s)	Specific requirements	English level	Final grade
Accounting BSc (Hons)	FHSS	Maths and any two from Politics, Economics and Business Studies	A with A in Speaking and Listening and no component below B	AAA
Accounting and Finance BA Econ (Hons)	FHSS	Economics and Maths	A	AAB
Actuarial Science and Mathematics BSc (Hons)	FES	A* Maths, if taking Further Maths, grade A must be achieved	B with B in Writing and no component below C	A*AB
Aerospace Engineering BEng (Hons)*	FES	Maths and Physics	C	AAB
Architecture BA (Hons)	FHSS	Submission of a satisfactory portfolio	B with B in Writing and no component below C	AAA
Artificial Intelligence BSc (Hons)*	FES or FB	Excellent performance in local exam prior to the International Foundation, particularly in Maths and Physics	B	A*A*A*
Biochemistry BSc (Hons)*	FB	A in any two from Chemistry, Biology, Physics, Maths. Chemistry is compulsory, Biology is preferred as a second science subject	B with no component below B	AAB
Biology BSc (Hons)	FB	A in any two from Chemistry, Biology, Physics, Maths. Chemistry and Biology are preferred	B with no component below B	AAB
Biomedical Sciences BSc (Hons)*	FB	A in any two from Chemistry, Biology, Physics, Maths. C hemistry and Biology are preferred	B with no component below B	AAB
Biotechnology BSc (Hons)*	FB	A in any two from Chemistry, Biology, Physics, Maths. Chemistry and Biology are preferred	B with no component below B	AAB
Cell Biology BSc (Hons)*	FB	A in any two from Chemistry, Biology, Physics, Maths. Chemistry and Biology are preferred	B with no component below B	AAB
Chemical Engineering BEng (Hons)*	FES	Maths and Physics or Chemistry	B	AAB
Chemistry BSc (Hons)*	FES	Chemistry plus one from another science or mathematics	C	AAB
Civil and Structural Engineering MEng (Hons)	FES	Maths and Physics	C	AAA
Civil Engineering BEng* (Hons)	FES	Maths and Physics	C	AAB
Computer Science BSc (Hons)*	FES	Excellent performance in local exam prior to the International Foundation, particularly in Maths and Physics	B	A*A*A*
Criminology BA (Hons)	FHSS	Maths	B with B in Speaking and Writing and no component below C	AAB
Developmental Biology BSc (Hons)*	FB	A in any two from Chemistry, Biology, Physics, Maths. Chemistry and Biology are preferred	B with no component below B	AAB
Earth and Planetary Sciences BSc (Hons)*	FES	At least one science subject	B with no component below B	AAB
Economics BSc (Hons)	FHSS	A in Maths and AB in Economics	B	AAB
Economics and Finance BA Econ (Hons)	FHSS	Maths and Economics	A	AAB
Economics and Politics BA Econ (Hons)	FHSS	Maths and Economics	B	AAB
Electrical and Electronic Engineering BEng (Hons)*	FES	Maths and either Physics, Further Maths or Chemistry	C	AAB
Electronic Engineering BEng (Hons)*	FES	Maths and either Physics, Further Maths or Chemistry	C	AAB
Environmental Science BSc (Hons)*	FES	At least one science subject	B	ABB
Fashion Buying and Merchandising BSc (Hons)	FES or FHSS	None	C	AAB
Fashion Management BSc (Hons)	FES or FHSS	Maths	C	AAB
Fashion Marketing BSc (Hons)	FES or FHSS	Maths	C	AAB
Finance BA Econ (Hons)	FHSS	Maths and Economics	A	AAB
Genetics BSc (Hons)*	FB	A in any two from Chemistry, Biology, Physics, Maths. Chemistry and Biology are preferred	B with no component below B	AAB
Geography BA (Hons)	FES or FHSS	None	B with B in Writing and no component below C	AAB
Immunology BSc (Hons)*	FB	A in any two from Chemistry, Biology, Physics, Maths. Chemistry and Biology are preferred	B with no component below B	AAB
Information Technology Management for Business BSc (Hons)	FHSS	Maths	A with A in Speaking and Writing and no component below B	AAB
International Business, Finance and Economics BSc (Hons)	FHSS	Maths and any two from Politics, Economics and Business Studies	A with A in Speaking and Writing and no component below B	AAA
International Disaster Management and Humanitarian Response BSc (Hons)	FHSS	Maths	B with B in Speaking and Writing and no component below C	ABB
Law LLB (Hons)	FHSS	None	A with no component below B	AAA
Life Sciences BSc (Hons)	FB	A in any two from Chemistry, Biology, Physics, Maths. Chemistry and Biology are preferred	B with no component below B	AAB
Management BSc (Hons)	FHSS	Maths and any two from Politics, Economics and Business Studies	A with A in Speaking and Listening and no component below B	AAB

Grade equivalents table

Grade	%	Academic modules	EAP module
		NCUK points	IELTS equivalency
A*	>80%	56 points	7.5
A	70-79%	48 points	7
B	60-69%	40 points	6.5
C	50-59%	32 points	6
D	40-49%	24 points	5.5
E	35-39%	16 points	5
U	<35%	-	-

100+ progression degree options

Degree	Pathway(s)	Specific requirements	English level	Final grade
Management (Accounting and Finance) BSc (Hons)	FHSS	Maths and any two from Politics, Economics and Business Studies	A with A in Speaking and Listening and no component below B	AAB
Management (Human Resources) BSc (Hons)	FHSS	Maths and any two from Politics, Economics and Business Studies	A with A in Speaking and Listening and no component below B	AAB
Management (Innovation, Strategy and Entrepreneurship) BSc (Hons)	FHSS	Maths	A with A in Speaking and Writing and no component below B	AAB
Management (International Business Economics) BSc (Hons)	FHSS	Maths	A with A in Speaking and Writing and no component below B	AAB
Management (Marketing) BSc (Hons)	FHSS	Maths and any two from Politics, Economics and Business Studies	A with A in Speaking and Listening and no component below B	AAB
Materials Science and Engineering BSc (Hons)*	FES	Two from Maths, Physics and Chemistry	C	AAA
Mathematics BSc (Hons)*	FES or FHSS	A* Maths. If taking Further Maths, grade A must be achieved	C with no component below C	A*AB
Mathematics and Physics BSc (Hons)*	FES	Maths and Physics	B	A*A*A - A*AA
Mathematics and Statistics BSc (Hons)*	FES or FHSS	A* Maths. If taking Further Maths, grade A must be achieved	C with no component below C	A*AB
Mathematics with Finance BSc (Hons)	FES or FHSS	A* Maths. If taking Further Maths, grade A must be achieved	B with B in Writing and no component below C	A*AB
Mechanical Engineering BEng (Hons)*	FES	Maths and Physics	C	AAB
Mechatronic Engineering BEng (Hons)*	FES	Maths and either Physics, Further Maths or Chemistry	C	AAB
Medical Biochemistry BSc (Hons)*	FB	A in any two from Chemistry, Biology, Physics, Maths. Chemistry is compulsory, Biology is preferred as a second science subject	B with no component below B	AAB
Microbiology BSc (Hons)	FB	A in any two from Chemistry, Biology, Physics, Maths. Chemistry and Biology are preferred	B with no component below B	AAB
Molecular Biology BSc (Hons)	FB	A in any two from Chemistry, Biology, Physics, Maths. Chemistry is compulsory, Biology is preferred as a second science subject	B with no component below B	AAB
Neuroscience BSc (Hons)*	FB	A in any two from Chemistry, Biology, Physics, Maths. Chemistry and Biology are preferred	B with no component below B	AAB
Optometry BSc (Hons)	FES	Chemistry, Maths and Biology	B with no component below B	AAB
Pharmacology BSc (Hons)*	FB	A in any two from Chemistry, Biology, Physics, Maths. Chemistry and Biology are preferred	B with no component below B	AAB
Pharmacology and Physiology BSc (Hons)	FB	A in any two from Chemistry, Biology, Physics, Maths. Chemistry and Biology are preferred	B with no component below B	AAB
Pharmacy MPharm (Hons)	FPH	ABB in Chemistry, Biology and Mathematics. Subject to successful interview	A	AAB
Physics BSc (Hons)*	FES	Maths and Physics	B	A*A*A - A*AA
Physics with Astrophysics BSc (Hons)*	FES	Maths and Physics	B	A*A*A - A*AA
Planning and Real Estate BSc (Hons)	FES or FHSS	Maths	B with B in Speaking and Writing and no component below C	ABB
Politics and International Relations BSocSci (Hons)	FHSS	Politics	A	ABB
Politics, Philosophy and Economics BA (Hons)	FHSS	Politics and Economics	B	AAA
Psychology BSc (Hons)	FPS	At least one science subject	B	AAB
Social Anthropology BSocSc (Hons)	FHSS	None	B with B in Speaking and Writing and no component below C	ABB
Sociology BSocSci (Hons)	FHSS	Politics	B	BBB
Software Engineering BSc (Hons)*	FES	Maths and Further Maths or Maths and Physics. Excellent performance in local exam prior to the International Foundation, particularly in Maths and Physics	B	A*A*A*

Degree option with a year in industry also available.
 Degree option with a year abroad or with overseas experience also available.

Please note: English level and academic progression requirements are correct to the best of our knowledge at the time of going to print. In some circumstances these may change throughout the year - please visit www.intostudy.com/manchester/courses for the most up to date information. Progression requirements, including English level and final grade, may be higher for degrees with a year in industry, year abroad/overseas placement, and with an integrated Master's.

* Also available as an integrated Master's

Find comprehensive information on all academic pathway programmes, degree options and progression requirements at: www.intostudy.com/manchester/courses

Improve your English language skills to prepare for further academic study

Start date

16 weeks: Aug
1-4 terms: Sep, Jan, Apr, Jun

English language entry requirements

From IELTS 3.0 or equivalent

Age requirement

16 years and above

Class size and hours

Maximum of 16 students

30 learning hours per week, with 25 hours of face-to-face contact

Note: 1 term = 11 weeks (10 of which are teaching weeks)

Improve your English language skills for work, socialising and travel

Start date

Jun, July, Aug, Sep, Oct, Nov and Dec

English language entry requirements

All English levels, from elementary to upper intermediate

Age requirement

16 years and above

Class size and hours

Maximum of 16 students

20 hours per week on average

English courses

EN Academic English



- For students who need to increase their IELTS level in order to progress to university. This intensive course offers rapid progress of up to one IELTS band per term.

Course features

- You will learn through face-to-face teaching and online learning to communicate effectively in English and improve your reading, writing, speaking and listening skills.
- A diverse social programme and effective academic content will help you to develop the fluency and confidence you need to progress to further study.
- Access INTO's interactive online learning platform, MyINTO, outside of class to practise your English language skills, complete tasks and engage with classmates.
- Developed in partnership with Cambridge English, the world leader in language assessment, INTO English Language Assessment (IELA) provides a standardised online assessment of all four core language skills throughout your studies. The IELA test is available to you as an additional form of assessment and allows you to choose from a wide range of Higher Education institutions

EN General English

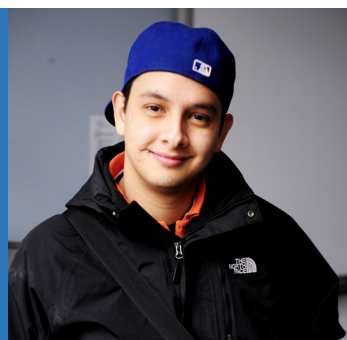
- For students who want to increase their confidence in using everyday English for general life, work, socialising and travel in the UK.

Course features

- Build your confidence in core English language skills in everyday situations, from speaking, reading, listening and writing to vocabulary and grammar.
- Take part in a range of activities and socialise with students from all over the world to build on your English language ability and make new friends.
- Year-round courses have flexible start dates and course lengths, from 2-48 weeks. Take part in a range of activities and socialise with students from all over the world to build on your language ability.

"You can not find a better place to study English than in the UK. I learned about different cultures, behaviours and religions. I think it has been the biggest experience of my entire life!"

Nixander, Colombia
Studied General English at INTO Manchester



Accredited by the
BRITISH COUNCIL
for the teaching
of English in the UK

All our English language courses at INTO Manchester have received accreditation from the British Council.

SUCCESSFUL INTO ALUMNI



"I'm thankful for INTO because it helped me understand my environment here in Manchester. A lot of people come to University and the UK for the first time, and struggle to handle it but I feel like having time at INTO to get used to everything was extremely helpful."

Completed an International Foundation and progressed to LLB (Hons) at The University of Manchester



"At INTO, you have a lot of support and if you have any issues your Personal Tutor is there to help. They recognise areas where you are doing well and give you challenges to continue your personal development. Living abroad can be daunting, so the support that INTO gives us is very beneficial."

Completed an International Foundation and progressed to BEng (Hons) Petroleum Engineering at The University of Manchester. Now working as an Engineer in Norway

"For the application to Architecture, we had to submit a portfolio and were provided with a 10-day course in Art at The University of Manchester. The teacher showed us how to set up our portfolio and the different kinds of sketches we'll be producing on the course!"

Completed an International Foundation and progressed to BA (Hons) Architecture at the Manchester School of Architecture

Dates and prices

The cost of your programme may vary depending on factors including the pathway chosen and programme length. The following guide to costs is based on pricing for the current academic year and provides an indication of the cost of attendance for some of our pathways. For specific cost information, please refer online: www.intostudy.com/manchester/courses

Estimated cost of attendance based on prices for current academic year 2020-2021

Study length	Tuition	Accommodation	Books and fees	Airport pick up**	Insurance	Total
Academic programmes						
International Foundation (3 term)	£18,635	£5,775-£10,200	£420-£820	£45	£357	£25,187-£30,012
International Foundation (4 term)	£23,495	£8,400-£13,150	£510	£45	£466	£32,871-£37,621
English language courses						
1 term*	£4,430	£1,925-£2,805	£90	£45	£122	£6,567-£7,447
16 weeks	£7,090	£3,130-£4,550	£130	£45	£145	£10,495-£11,915

Start months and term dates

Academic programmes		Academic English	
June (4 term)	Mon 28 Jun 2021-Fri 17 Jun 2022	August (16 weeks)	Mon 09 Aug 2021-Fri 10 Dec 2021
September (3 term)	Mon 13 Sep 2021-Fri 17 Jun 2022	September (1 term)	Mon 27 Sep 2021-Fri 10 Dec 2021
September (4 term)	Mon 27 Sep 2021-Fri 26 Aug 2022	January (1 term)	Mon 10 Jan 2022-Fri 25 Mar 2022
January (3 term)	Mon 10 Jan 2022-Fri 26 Aug 2022	April (1 term)	Mon 04 Apr 2022-Fri 17 Jun 2022
		June (1 term)	Mon 27 Jun 2022-Fri 09 Sep 2022

Prices shown are for the current academic year of 01 September 2020 – 31 August 2021 and for indicative purposes only. All students who confirm their offer on or before 31 January 2021 will pay the 2020/2021 price as per their existing offer letter. After 31 January 2021, where tuition fees have increased, all current offers will be reissued and students will receive a new offer with the new 2021/2022 pricing. For full details of term dates, please visit the relevant course page at www.intostudy.com/manchester/courses

* The price will depend on your start date and length of study. Prices shown are only for one term.
Vacation weeks in between terms are extra and will be charged at the weekly accommodation price.

** Please note airport pickup is optional and is not included in the total.



Apply via your local INTO educational counsellor

If you would like us to put you in contact with one of our counsellors, please contact us.



Apply online

Complete our online application form: apply.intostudy.com



Need some help with your tuition fees?

Check to see if you're eligible for a scholarship: www.intostudy.com/manchester/scholarships

Discover more online

For students:
www.intostudy.com/manchester
For education counsellors:
partnerportal.intoglobal.com/manchester

Connect with us



Through innovative partnerships with leading universities, we expand opportunities for higher education, ensuring success and transforming the lives of our students and staff.

INTO GIVING

Working across the globe, INTO Giving supports projects that increase access to education and improve the quality of teaching and learning. For more information visit www.into-giving.com

Contact us

Enquiries and applications:
ukes@intoglobal.com
or +44 1273 876040
Visit the Centre:
marketing.manchester@intoglobal.com
or +44 161 631 1200

Centre address details:
INTO Manchester
Bridgewater House
58/60 Whitworth Street
Manchester
M1 6LT
United Kingdom

© INTO Manchester Limited, September 2020. Every effort is made to ensure that content published in this document is correct at the time of publication. However, from time to time there may be occasions where some of the information has changed since the date of publication. The most up to date information can be found on our website at www.intostudy.com/manchester – please refer to this before submitting your application. If, in our opinion, we consider that any change has been made which has a material impact on any offer that has been made to you to study with us, we will inform you of these changes in writing. The information provided in this document is subject to INTO Manchester in partnership with The University of Manchester's terms and conditions which can be accessed at www.intostudy.com/manchester/terms.

INTO Manchester Limited, 6438137, One Gloucester Place, Brighton, East Sussex, BN1 4AA, UK.

Education provider sponsor number 6FY6FQBVI

Education counsellor's stamp



The University of Manchester