

INTO»

MANCHESTER

IN PARTNERSHIP WITH MANCHESTER METROPOLITAN UNIVERSITY



**Manchester
Metropolitan
University**

INTO university pathways

for international students

2021-22



A modern university with a proud history

Welcome to INTO Manchester, your pathway to a degree from Manchester Metropolitan University – a bold, ambitious and modern university. Following the successful completion of your INTO pathway, we give international students like you the opportunity to study at this diverse and inclusive university in the heart of Manchester – one of the UK's best cities to live in*.



university under
50 years old

(Times Higher Education
Young University Rankings 2019)



to professional bodies
including ACCA, CIMA
and RIBA

34,000+
students

one of the largest
universities in the UK

At INTO Manchester, you'll study a specialist programme designed exclusively for international students and tailored to the requirements of the University. We'll help you improve your English language skills and adjust to life as a student in the UK; so when you successfully complete your pathway and meet the required grades, you can confidently progress to your degree at Manchester Metropolitan University.

You'll complete your course at our INTO Study Centre just off campus – and with access to many key facilities on campus, you'll feel like part of the University community from the day you arrive.

Choosing to study abroad is a big decision, but at INTO Manchester, we'll give you everything you need to succeed at university and beyond.

**Choose #INTOManchester and open
up a lifetime of opportunities.**



The Department
of Engineering is a
partner of IET,
offering accredited degrees



A triple accredited
**Business
School**



Manchester School of Art
is one of the UK's
oldest art schools

Manchester Metropolitan University's top-ranked subject areas



7th
in the UK for
Art and Design**



9th
in the UK for
Hospitality and
Tourism**



10th
in the UK for
Architecture †



15th
in the UK for
Physiotherapy**

* Global Liveability Report 2015-19 ** The Complete University Guide 2021 † The Times and The Sunday Times Good University Guide 2020
† Manchester School of Architecture is collaboratively owned and run by both Manchester Metropolitan University and The University of Manchester



Top 20

in the UK in 13 subject areas

(The Complete University Guide 2021)



About the University

Like the city it's located in, Manchester Metropolitan University is full of energy, creativity and diversity. The campus is designed around your student experience and based in the heart of one of the top 15 best cities in the world*.

Award-winning and international

Manchester Metropolitan University is ranked among the world's top 200 universities under 50 years old** in recognition of its commitment to providing excellent teaching and research.

With its roots in higher education dating back to 1824, more than a century of expertise has developed the University into what it is today.

The University is also one of the UK's largest with **34,000** students, over **3,000** of which are international students from **130 countries**.

Industry-relevant degrees

With a dedicated focus on employability, the University's teaching and research staff will help you learn industry-relevant skills. With an impressive network of industry partners, the University's courses are designed to develop your career with many degrees offering **industry placements** and **internships**.

Diverse academic choice

Depending on the pathway programme you successfully complete, you will be able to choose from hundreds of degree subjects, including:

- Art, Design, Fashion and Textiles
- Accounting and Finance, Business and Law
- Architecture
- Biomedical Science and Chemistry
- Computer Science, Engineering and Mathematics

The University also offers a number of specialist degrees, from Animation to Human Biosciences. However, if you're not sure which specific course you want to study, the University's **International Progression Manager** can help you decide during your studies with INTO Manchester.

Kick-start your career

The **Careers and Employability Team** offer you a range of services during your degree, and you will also receive digital careers support for life. Services during your degree include:

- career development lectures
- CV writing workshops
- 'meet the employer' events

Many degrees offer
internships
and work
placements



"After your pathway programme at INTO Manchester, you can look forward to an education at Manchester Metropolitan University that will expand your knowledge, stimulate your creativity and raise your aspirations."

Professor Malcolm Press, Vice-Chancellor
Manchester Metropolitan University



* Time Out 'The 48 Best Cities in the World' 2019

** Times Higher Education Young University Rankings 2019

Facilities built for you

Manchester Metropolitan University has invested £400 million to create modern academic facilities such as lecture theatres, seminar rooms and study zones. They're equipped with the latest technology and specialist equipment to help you get the most out of your studies once you progress to the University.

On-campus facilities

The **All Saints Library** is open 24-hours a day during term time, and offers access to over one million books, journals and e-resources. You'll have access to:

- PCs and Macs
- workstations
- laptop loans
- printing and photocopying

The University has a host of IT and media facilities for you to use once you progress to your degree, including a language lab complete with plasma wall screens and stations for private study. Whatever you need for your studies, from multimedia technology to high-spec labs, Manchester Metropolitan University has it all.

A wealth of sporting choice

The University's fantastic sports facilities are close to the campus and offer a great range of free health and fitness classes, as well as exclusive membership deals for students.

Whatever sport or activity you love, you'll find what you need. Gyms and facilities include:

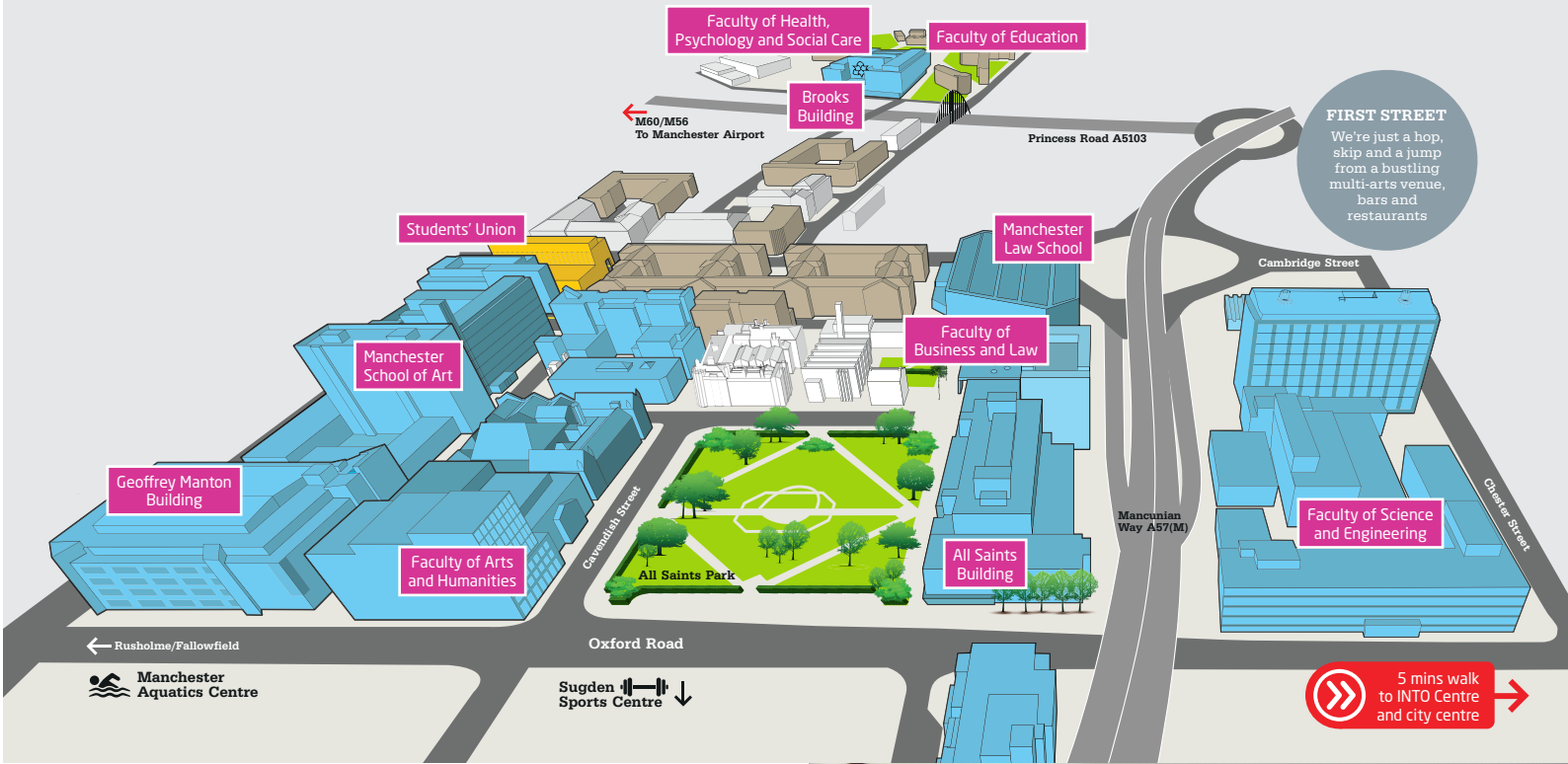
- **Platt Lane Sports Complex**, offering outdoor and indoor pitches, including a gym
- **Sugden Sports Centre**, close to the All Saints campus, offers a fully-equipped fitness suite and squash courts
- **Manchester Aquatics Centre**, including a 50m swimming pool and three gyms

The Students' Union

Every student at the University is automatically a member of the Students' Union, which exists to make sure you have the best experience you can during your studies. It's not just about focusing on academic results, but helping you with everything else in life while you're studying.

You can book a meeting room, join a society, buy supplies from the shop, receive free and independent advice, find out about campaigning and volunteering opportunities, discover a place to meet friends and relax, and so much more.

The Union is led by Student Officers who work full-time to represent Manchester Metropolitan students. They decide The Union's political direction, run campaigns and work with the University to make things better for students.



Facilities available during your INTO Manchester pathway:



All Saints University Library



Art and Design studios
(if you're on the Art and Design pathway)



Sugden Sports Centre
(student discount available)



On campus cafés and restaurants



Specialist facilities

Learning at Manchester Metropolitan isn't just confined to the classroom. There are lots of specialist facilities available, depending on your degree:



Iconic, environmentally friendly Business School



CAD and fashion technology studios



Biology, Chemistry and Engineering laboratories



4,000 student Macs and PCs



Manchester School of Art - an eclectic mix of buildings from 19th-21st centuries



Brooks Building - specialist classrooms, sports hall and physiotherapy clinic

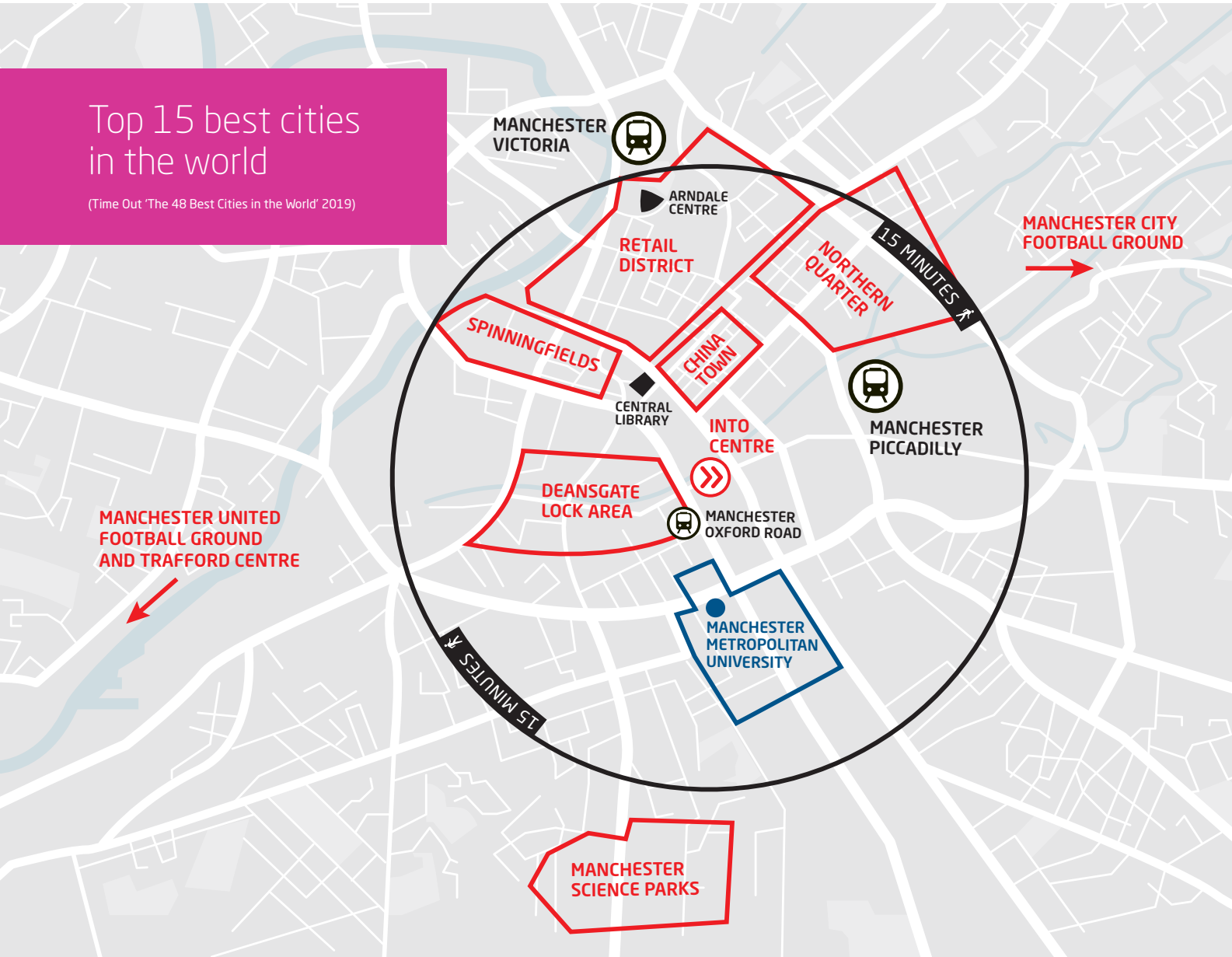


Discover Manchester

A diverse mix of music, shopping, sport and a buzzing social scene all wrapped up in one student-focused city. Get ready to explore the UK's capital of the North and one of the most exciting cities in the world.

Top 15 best cities in the world

(Time Out 'The 48 Best Cities in the World' 2019)



SHOP 'TIL YOU DROP

From the high street to chic boutiques, Manchester is the place for fashion

- Arndale Centre** – high street styles
- Northern Quarter** – vinyl and vintage boutiques
- Trafford Centre** – 250+ shops under one roof
- The Avenue** – designer labels
- Afflecks** – hipster's paradise



"Manchester is great! With fantastic nightlife, football and lots of students, it's like London but cheaper!"

Rafael, Venezuela
Graduated with BSc (Hons) Business Enterprise and MSc International Food Management from Manchester Metropolitan University

Culture and creativity

When you live in Manchester, you'll be immersed in a diverse world of music, art and fashion. You'll have access to a bustling social calendar packed with festivals, all-day events and free activities.

The city has over 30 museums and galleries, including:

- The Whitworth
- Manchester Museum
- Manchester Art Gallery
- Centre for Chinese Contemporary Art
- National Football Museum
- Museum of Science and Industry

The Portico, Chetham and Manchester Central Libraries are also a must-see in a city designated a **UNESCO City of Literature**.

Gourmet to everyday

With over 300 restaurants in the city, there is an exciting range of quality, modern British and international cuisine available, making it easy to find foods from around the world.

From fine dining in **Spinningfields** to street food at Maker's Market, you'll find options to suit your mood and budget. **Deansgate** offers everything from tapas to traditional British food, while the cool cafés of the **Northern Quarter** are a favourite with locals.

Manchester's **Chinatown** is the second largest in Britain and has many Asian restaurants and supermarkets. There are also over 70 restaurants and shops in **Rusholme**, offering South Asian and Middle Eastern cuisine and produce. You'll never run out of exciting options in Manchester!

An iconic sporting city

Manchester is home to two of the biggest names in sport: Manchester United and Manchester City. Manchester United's ground, **Old Trafford**, is the largest club ground in Britain, while Manchester City are based at the striking **Etihad Stadium**.

Fancy getting involved? The city offers a range of state-of-the-art facilities, from indoor ski-slopes to velodromes. Sport has always been at the heart of Manchester.

Getting out and about

Manchester is easy to get around on foot, by bus or by tram, and it's a great base to explore the UK – you can get to London in just two hours by train and to the Lake District in just over an hour. **Manchester Airport** also has flights to 200+ destinations!



Your INTO Centre

Are you ready to live and learn in one of the UK’s biggest and best student cities? With modern facilities in a historic building, an exciting programme of activities and a team of friendly staff, INTO Manchester has it all!

Your Study Centre

The INTO Manchester Centre offers you the chance to study in one of the most exciting and diverse cities in the world. Located in Bridgewater House, an impressive Edwardian building, the Centre is right in the heart of bustling Manchester. Most of your classes will take place here, and you'll find everything you need to study and socialise in one location.

Our academic programmes here are taught in a similar way to what you'll experience at university so that you'll be ready when you progress. INTO Manchester's learning Centre includes:

- 45 classrooms featuring digital whiteboards
- well-equipped computing suites
- free Wi-Fi and internet access throughout
- 24/7 access to our virtual learning environment to download resources
- a Learning Resource Centre, with a wide range of online journals, books and excellent study materials
- silent study areas

If you want a break between classes, you can relax in the break-out spaces where you can play table football with friends, eat in the communal cafeteria on-site, or head out to the many cafés and shops on your doorstep. You'll soon feel right at home!

45
modern classrooms



Supporting you

Studying in another country can be a big adjustment, and we're here to help you. Our friendly **Student Services team** will help you with accommodation and visa support, and the orientation programme in your first week will cover everything from opening a bank account to getting around the city.

Our experienced teaching staff will help you to understand the UK higher education system. We operate an open-door policy for most academic staff rooms and hold optional revision classes for each subject during exam periods. You'll also be allocated a Personal Tutor upon arrival.

Our dedicated **Student Placement team**, along with the University's **International Progression Manager**, will provide you with practical counselling, including advice on which degree you may wish to study. They'll even arrange for you to visit your chosen faculty.

Your safety is our priority

There's a 24-hour emergency telephone helpline if you need to speak to someone during out of office hours. If you're under 18, we offer extra support that includes ensuring your safe transfer from the airport and checking on you each day at the residence where you'll live. You'll also be given a dedicated named person to contact to ensure your wellbeing and receive a copy of our code of conduct, which you must follow; especially outside of class when you'll be unsupervised.

"We can't wait to welcome you to Manchester and help you settle into life in the UK so you can concentrate on your studies."

Dawn Abbott, Centre Director

Get involved and make friends

We'll make it easy for you to meet new people and find new, fun things to do. Our staff will organise regular social activities and help you enjoy Manchester to the fullest. By taking part in our social programme, you'll have the chance to meet other students and explore sights in Manchester and the rest of the UK.

We also organise regular sporting activities and student events to help you make great friends and memories, including during:

- Chinese New Year
- Christmas
- Easter
- Eid
- Halloween



Your home from home

INTO Manchester's safe student accommodation options enable you to live as part of a vibrant student community, or you can immerse yourself in British family life with a homestay experience. You decide!



"I really enjoyed living in INTO Manchester accommodation as all my flatmates were super friendly and I met lots of other INTO students. We all respected each other and had fun."

Geoff, South Africa
Graduated with BSc (Hons) Business Technology from Manchester Metropolitan University

Supporting you

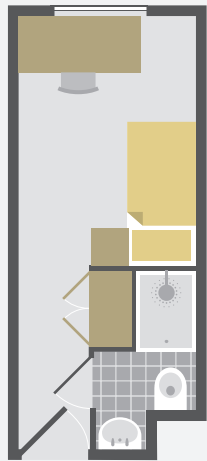
In all the residences, you'll find staff available 24/7 to offer support, and we'll also provide you with a 24-hour emergency helpline telephone number. If you're under 18 and living in INTO managed accommodation, we offer extra support and will check in on you each day at the student residence where you live.

Homestay

This is a unique opportunity to experience British life and culture first hand. You'll have a private room in a carefully selected host's home, sharing mealtimes and living spaces.

En suite student residences

Just a short walk from the INTO Centre and close to Manchester Metropolitan University, your accommodation has a central location which means you'll be close to many restaurants, cafés and shops.

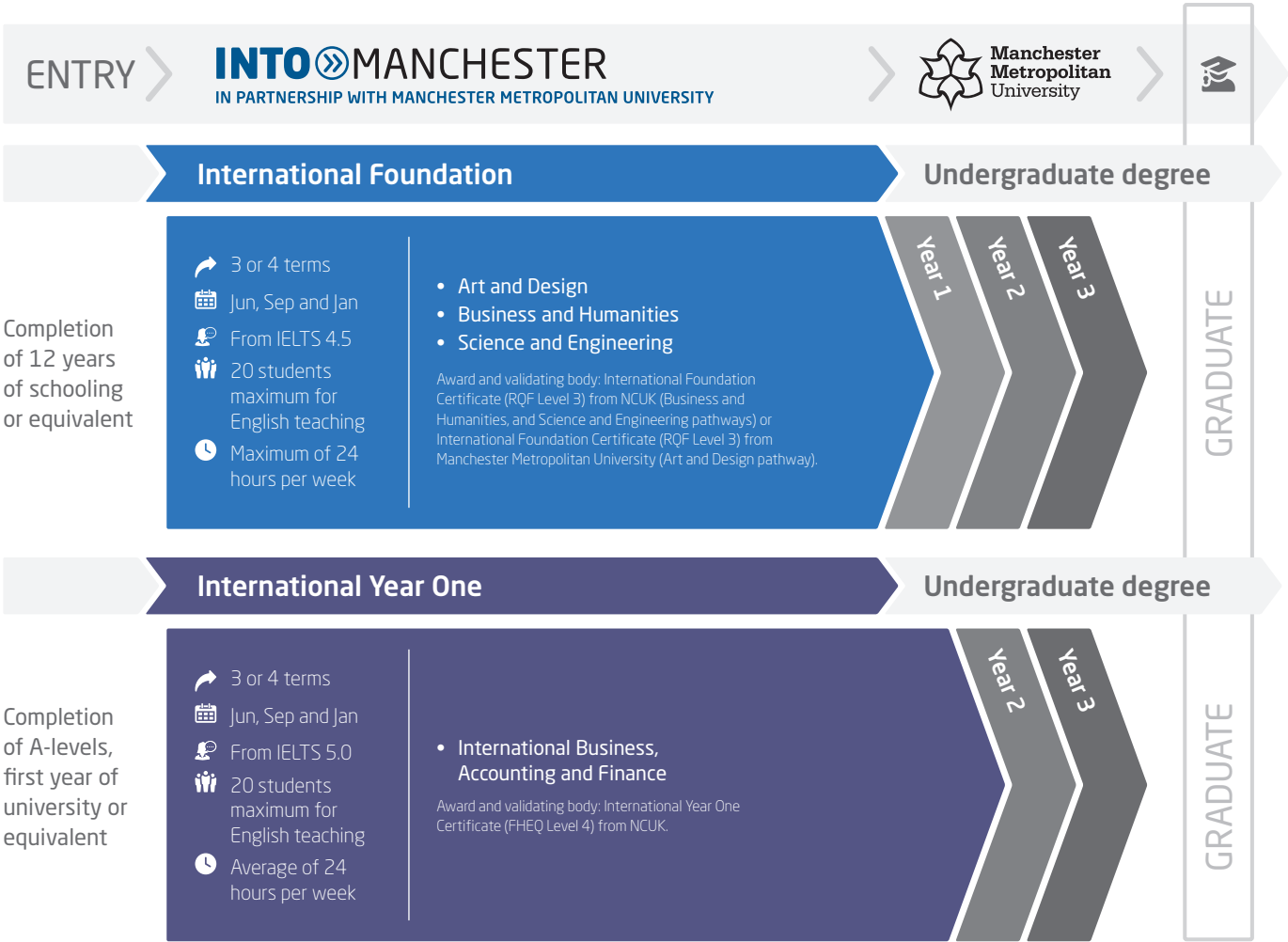


- En suite bathroom
- Communal areas
- Laundry facilities
- Wi-Fi
- 24/7 staff
- Accepts under 18s
- 12 MIN Walk to INTO Centre

Example room layout. For full details of our accommodation options, visit: www.intostudy.com/mmu/accommodation

Choosing your course

Prepare for your university degree with our tailored, academic pathway programmes. You'll benefit from university-style teaching for subject-based modules and high academic standards. Then, when it comes to progressing to your chosen degree, we'll support you with your university application.



Please note that course length and start month options may vary depending on the pathway chosen. Please visit www.intostudy.com/mmu/courses for full information.

Do I need to take a preparation programme?

If you already meet the University's academic and English language requirements for your chosen degree programme, you may be eligible to apply directly to an undergraduate or postgraduate degree. For more information, visit: <https://www.intostudy.com/mmu/courses/direct-entry-degree>

"I came to Manchester speaking very little English and I graduated top of my class!"

Bader, Saudi Arabia
Completed an International Foundation in Science and Engineering and progressed to BEng (Hons) Electrical and Electronic Engineering at Manchester Metropolitan University. Graduated with First Class Honours and now working as a Data Scientist at Saudi Data and AI Authority in Riyadh, Saudi Arabia



International Foundation

Art and Design - FAD

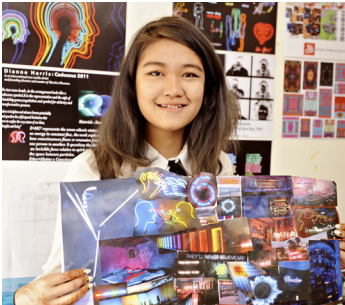
- > Gain hands-on experience through practical-based learning in the Art and Design studios at Manchester Metropolitan University.
- > Progress to a degree at one of the oldest and largest Art Schools in the UK.

What will I study?

You will need to earn 120 credits from the following modules to successfully complete your pathway programme:

- English for Academic Study (30 credits)
- Studio 1: Exploring Visual Language (30 credits)
- Studio 2: Developing Specialist Pathways (30 credits)
- Studio 3: Final Major Project (30 credits)

Progress to **1 of 15** degrees. Find out more online at www.intostudy.com/mmu/FAD

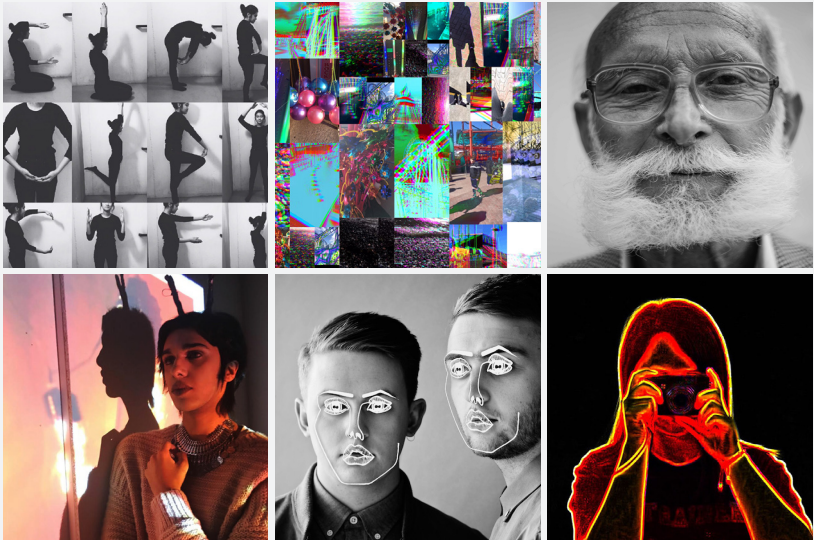


"Manchester is a great place to get inspiration! My tutors and classmates were like a team and it made it easier to study in a foreign country."

Chan Myae, Myanmar
Graduated with BA (Hons) Graphic Design from Manchester Metropolitan University

My portfolio

"The portfolio I made during my pathway shows my personality and creative way of thinking. It's a great way to sell yourself in the design industry. Take a look at some of my work."



Progress to Year 1 of an undergraduate degree at Manchester Metropolitan University

Start date

3 term: Sep and Jan
4 term: Jun and Sep

English language entry requirements*

3 term: IELTS 5.0 (with a minimum of 5.0 in writing) or equivalent.

4 term: IELTS 4.5 (with a minimum of 4.5 in writing) or equivalent.

Age requirement

16 years and above**

Guidance for portfolio submission:

Applicants will need to submit a small portfolio. For more information, visit: www.art.mmu.ac.uk/courses/advice/

* If you do not meet the minimum English language requirements, you should apply for our Academic English course. See page 18 for more information.

** All students commencing courses on a published September start date must be 17 years old by 31 December of that calendar year. For all other start dates, students must be 17 years old on the published start date of the programme.

Prepare to progress to a degree at Manchester Metropolitan University:

7th

in the UK for Art and Design

(The Complete University Guide 2021)

Top 25

in the UK for Fashion and Textiles

(Guardian University Guide 2020)

Progress to Year 1 of an undergraduate degree at Manchester Metropolitan University

Start date
3 term: Sep and Jan
4 term: Jun and Sep

English language entry requirements*
3 term: UKVI IELTS 5.0 (with a minimum of 5.0 in writing) or equivalent
4 term: UKVI IELTS 4.5 (with a minimum of 4.5 in writing) or equivalent

Age requirement
16 years and above**

Start date
3 term: Sep and Jan
4 term: Jun

English language entry requirements*
3 term: UKVI IELTS 5.0 (with a minimum of 5.0 in writing) or equivalent
4 term: UKVI IELTS 4.5 (with a minimum of 4.5 in writing) or equivalent

Age requirement
16 years and above**

* If you do not meet the minimum English language requirements, you should apply for our Academic English course. See page 18 for more information.
** All students commencing courses on a published September start date must be 17 years old by 31 December of that calendar year. For all other start dates, students must be 17 years old on the published start date of the programme.

International Foundation

Business and Humanities - FBH

- › Explore business-related theories and their practical application using real-world case studies.
- › Prepare for classes by reviewing articles and videos uploaded to our online learning environment.
- › Practise professional presentation skills through assessed group work.

What will I study?
English for Academic Purposes and Study Skills (EAP)
Information Communication Technologies (ICT)**

3 out of 4*:
Business Studies
Economics
Mathematics
Government and Politics

Progress to **1 of 100+** degrees. Find out more online at www.intostudy.com/mmu/FBH

Science and Engineering - FSE


- › Visit the Faculty of Science and Engineering to meet with academic staff and find out about degree programmes.
- › Gain practical experience in university-style labs.

What will I study?
English for Academic Purposes and Study Skills (EAP)
Information Communication Technologies (ICT)**

3 out of 5*:
Biology
Chemistry
Further Mathematics
Mathematics
Physics

Progress to **1 of 30+** degrees. Find out more online at www.intostudy.com/mmu/FSE

Prepare to progress to a degree at Manchester Metropolitan University:



 **9th**
in the UK for Hospitality and Leisure Management
(The Complete University Guide 2021)



 **15th**
in the UK for Physiotherapy
(The Complete University Guide 2021)

* The choice of modules depends on your intended degree programme. Some combinations may not be offered. Modules offered are subject to change.
** Compulsory but not credit bearing

International Foundation progression

There are more than 100 progression degree options at Manchester Metropolitan University. You can progress to any of these from one of our INTO Manchester pathway programmes. Below is a selection of some of the most popular. See pages 12-14 for more details on the pathways.

Degree	Pathway(s)	Specific requirements	English level	Final grade
Accounting and Finance BSc (Hons)  	FBH	Equivalent of grade C in High School Maths	C (with no component below D)	88 points
Advertising and Brand Communications BA (Hons)  	FBH	Equivalent of grade C in High School Maths	C (with no component below D)	96 points
Animal Behaviour BSc (Hons)  	FSE	Equivalent of grade C in High School Biology and Maths	C (with no component below D)	96 points
Animation BA (Hons) 	FAD**	None	50%	50%
Architecture BA (Hons)	FSE or FBH	Digital portfolio required. GCSE Maths C/4 or equivalent. A mixture of Science/Mathematics and Humanities/Arts subjects is preferred. High School Maths is required	B (with no less than B in writing and no less than C in listening, reading and speaking)	144 points with IFY Grades AAA
Banking and Finance BA (Hons)  	FBH	Equivalent of grade C in High School Maths	C (with no component below D)	96 points
Biology BSc (Hons)*  	FSE	Equivalent of grade C in High School Maths and Biology; other science subjects may be considered	C (with no component below D)	96 points
Biomedical Science BSc (Hons)* 	FSE	Equivalent of grade C in High School Maths and Biology; other science subjects may be considered	C (with no component below D)	96 points
Business Management BA (Hons)  	FBH	Equivalent of grade C in High School Maths	C (with no component below D)	96 points
Business Management with Law BA (Hons)  	FBH	Equivalent of grade C in High School Maths	C (with no component below D)	96 points
Business Psychology BA (Hons)  	FBH	Equivalent of grade C in High School Maths	C (with no component below D)	96 points
Business Technology BSc (Hons)  	FBH	Equivalent of grade C in High School Maths	C (with no component below D)	96 points
Business and Human Resource Management BA (Hons)  	FBH	Equivalent of grade C in High School Maths	C (with no component below D)	96 points
Chemistry BSc (Hons)*  	FSE	Equivalent of grade C in High School Maths, Science and Chemistr	C (with no component below D)	96 points
Computer Animation and Visual Effects BSc (Hons) 	FSE	Equivalent of grade C in High School Maths and Science	C (with no component below D)	96 points
Computer Forensics and Security BSc (Hons) 	FSE	Equivalent of grade C in High School Maths and Science	C (with no component below D)	96 points
Computer Games Technology BSc (Hons) 	FSE	Equivalent of grade C in High School Maths and Science	C (with no component below D)	96 points
Computer Science BSc (Hons)* 	FSE	Equivalent of grade C in High School Maths and Science	C (with no component below D)	96 points
Criminology BA (Hons) 	FBH	Equivalent of grade C in High School Maths	C (with no component below D)	96 points
Digital Media and Communication BSc (Hons) 	FSE or FBH	Equivalent of grade C in High School Maths	C (with no component below D)	96 points
Economics BA/BSc (Hons) 	FBH	Equivalent of grade C in High School Maths	C (with no component below D)	96 points
Economics and Finance BA (Hons)  	FBH	Equivalent of grade C in High School Maths	C (with no component below D)	96 points
Education Studies BA (Hons) 	FBH	Equivalent of grade C in High School Maths. Disclosure and Barring Service (DBS) check required prior to enrolment	C (with no component below D)	96 points
Electrical and Electronic Engineering BEng (Hons)* 	FSE	Equivalent of grade C in High School Maths and Science	C (with no component below D)	96 points
English/Teaching English to Speakers of Other Languages BA (Hons)	FBH	Grade B in English language or literature from additional qualification equivalent to UK A level	C (with no component below D)	96 points
Environmental Science BSc (Hons)  	FSE	Equivalent of grade C in High School Maths and Science	C (with no component below D)	96 points
Events Management BA (Hons)  	FBH	Equivalent of grade C in High School Maths	C (with no component below D)	96 points
Fashion BA (Hons)  	FAD**	None	50%	50%
Fashion Art Direction BA (Hons)  	FAD**	None	50%	50%
Fashion Business and Management BSc (Hons)  	FBH	Equivalent of grade C in High School Maths	C (with no component below D)	96 points
Fashion Buying and Merchandising BSc (Hons)  	FBH	Equivalent of grade C in High School Maths	C (with no component below D)	96 points
Fashion Design and Technology: Menswear BA (Hons)  	FAD**	None	50%	50%
Fashion Design and Technology: Sportswear BA (Hons)  	FAD**	None	50%	50%
Fashion Design and Technology: Womenswear BA (Hons)  	FAD**	None	50%	50%
Fashion Promotion BA (Hons) 	FBH	Equivalent of grade C High School Maths	C (with no component below D)	96 points
Film and Media Studies BA (Hons)  	FBH	English subject from A level equivalent qualification is preferred; related subjects also considered	C (with no component below D)	96 points
Filmmaking BA (Hons)	FAD**	None	50%	50%
Fine Art BA (Hons)  	FAD**	None	50%	50%
Forensic Psychology BSc (Hons) 	FBH	Equivalent of grade C in High School Maths	C (with no component below D)	112 points with IFY Grades BBC
Graphic Design BA (Hons)  	FAD**	None	50%	50%
Human Biosciences BSc (Hons) 	FSE	Equivalent of grade C in High School Biology, Maths and Science	C (with no component below D)	96 points














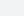



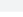






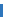
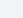






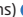

 Degree option with a year in industry also available.
 Degree option with a year abroad or with overseas experience also available.

* Also available as an integrated Master's
** Preferred route. The FBH pathway is another entry route for this course with different requirements.


Grade equivalents table

		Academic modules		EAP module
Grade	%	NCUK points	IELTS equivalency	
A*	>80%	56 points	7.5	
A	70-79%	48 points	7	
B	60-69%	40 points	6.5	
C	50-59%	32 points	6	
D	40-49%	24 points	5.5	
E	35-39%	16 points	5	
U	<35%	-	-	

International Foundation progression (continued)

Degree	Pathway(s)	Specific requirements	English level	Final grade
Human Resource Management BA (Hons)  	FBH	Equivalent of grade C in High School Maths	C (with no component below D)	96 points
Illustration with Animation BA (Hons)  	FAD**	None	50%	50%
Interior Design BA (Hons)  	FAD**	None	50%	50%
International Business Management BA (Hons)  	FBH	Equivalent of grade C in High School Maths	C (with no component below D)	96 points
International Hospitality Business Management BA (Hons)  	FBH	Equivalent of grade C in High School Maths	C (with no component below D)	96 points
International Tourism Management BA (Hons)  	FBH	Equivalent of grade C in High School Maths	C (with no component below D)	96 points
Law LLB (Hons)  	FBH	Equivalent of grade C in High School Maths	B (with no component below D)	112 points
Marketing BSc (Hons)  	FBH	Equivalent of grade C in High School Maths	C (with no component below D)	96 points
Mathematics BSc (Hons)* 	FSE	Equivalent of grade C in High School Maths	C (with no component below D)	96 points
Mechanical Engineering BEng (Hons)* 	FSE	Equivalent of grade C in High School Maths and Science	C (with no component below D)	96 points
Multimedia Journalism BA (Hons)	FBH	Equivalent of grade C in High School Maths	C (with no component below D)	96 points
Nutritional Sciences BSc (Hons) 	FSE or FBH	Equivalent of grade C in High School Maths	C (with no component below D)	96 points
Pharmaceutical Chemistry BSc (Hons) 	FSE	Equivalent of grade C in High School Chemistry and Maths	C (with no component below D)	96 points
Photography BA (Hons)	FAD**	None	50%	50%
Physiotherapy BSc (Hons)	FSE	Equivalent of 5 subjects from High School qualification at grade C or above, to include Mathematics and a Science subject. Grade C in Biology. Relevant work experience or shadowing required; A satisfactory Disclosure and Barring Service (DBS) certificate is required and should be completed through the university	B (with no component below D)	112 points with IFY Grades BBC
Politics BA (Hons) 	FBH	None	C (with no component below D)	96 points
Product Design BA (Hons)  	FAD**	None	50%	50%
Product Design and Craft BA (Hons)  	FAD**	None	50%	50%
Psychology BSc (Hons) 	FBH	Equivalent of grade C in High School Maths	C (with no component below D)	112 points with IFY Grades BBC
Sociology BA (Hons) 	FBH	Equivalent of grade C in High School Maths	C (with no component below D)	96 points
Software Engineering BSc (Hons) 	FSE	Equivalent of grade C in High School Maths and Science	C (with no component below D)	96 points
Sports Business Management BA (Hons)  	FBH	Equivalent of grade C in High School Maths	C (with no component below D)	96 points
Sport: Coaching and Development BSc (Hons) 	FBH	Equivalent of grade C in High School Maths and 4 other subjects	C (with no component below D)	96 points
Sport and Exercise Nutrition BSc (Hons) 	FSE	Equivalent of grade C in High School Biology, other Science subject and Maths	C (with no component below D)	96 points
Teaching English to Speakers of other Languages (TESOL) and Linguistics BA (Hons)	FBH	None	C (with no component below D)	96 points
Textiles in Practice BA (Hons)  	FAD**	None	50%	50%

 Degree option with a year in industry also available.

 Degree option with a year abroad or with overseas experience also available.

* Also available as an integrated Master's.

** Preferred route. The FBH pathway is another entry route for this course with different requirements.

Please note: English level and academic progression requirements are correct to the best of our knowledge at the time of going to print.

In some circumstances, these may change throughout the year and/or courses may be withdrawn - please visit www.intostudy.com/mmu/courses for the most up to date information.

Find comprehensive information on all academic pathway programmes, degree options and progression requirements at: www.intostudy.com/mmu/courses

"The most important thing I've learnt whilst in the UK is that being independent is very important. I make my own decisions, which will help build my career. Studying at Manchester Metropolitan has been the most exciting journey for me. It defines who I am and what I've become. In many aspects, it's also changed my view towards life and my ambitions."

Karim, India
Graduated with BSc (Hons) Software Engineering from Manchester Metropolitan University.
Now working as a Software Engineer at Flair Labs in India



International Year One

International Business, Accounting and Finance - YOBAF

- > Choose your specialist pathway post-arrival after a common first semester.
- > Many progression degrees offer a placement year or study abroad year.

What will I study?

You will need to earn 120 credits from the following module options to successfully complete your pathway programme:

Semester 1:

Business Economics (15 credits) Financial Accounting 1 (15 credits)
Business Skills (15 credits) Organisational Behaviour (15 credits)
English for Academic Purposes
and Study Skills (EAP)*

At the end of your first semester, you will continue to one of the following two pathways based on your chosen progression option:

Semester 2

English for Academic Purposes and Study Skills (EAP)*

Accounting and Finance pathway (AF)

Business Finance (15 credits) Financial Accounting 2 (15 credits)
Quantitative Methods for Business (15 credits) Management Accounting (15 credits)

Business and Management pathway (BM)

Quantitative Methods for Business (15 credits) Management Themes and Case Studies (15 credits)
Management Accounting (15 credits) Marketing (15 credits)

* Non-credit bearing but contributes to progression

Progress to **1 of 5** degrees. Find out more online at www.intostudy.com/mmu/YOBAF

Progress to Year 2 of an undergraduate degree at Manchester Metropolitan University

Start date

3 term: Sep and Jan
4 term: Jun and Sep

English language

entry requirements*

3 term: UKVI IELTS 5.5 (with a minimum of 5.5 in writing and reading) or equivalent

4 term: UKVI IELTS 5.0 (with a minimum of 5.0 in all subskills) or equivalent


Age requirement

17 years and above**

* If you do not meet the minimum English language requirements, you should apply for our Academic English course. See page 18 for more information.









** All students commencing courses on a published September start date must be 17 years old by 31 December of that calendar year. For all other start dates, students must be 17 years old on the published start date of the programme.

Prepare to progress to a degree at Manchester Metropolitan University:


 **ACCA, CIMA**
and **ICAEW**
exemptions on select degrees

International Year One progression

You can choose from five progression degree options at Manchester Metropolitan University. Please note that each pathway stream has different progression options.

Degree	Pathway(s)	Specific requirements	English level	Final grade
International Year One in International Business, Accounting and Finance				
Accounting and Finance BSc (Hons)*  	YOBAF (AF)	105 credits*	C (with no component below D)	50%
Business Management BA (Hons)  	YOBAF (AF/BM)	105 credits	C (with no component below D)	50%
Events Management BA (Hons)  	YOBAF (BM)	105 credits	C (with no component below D)	50%
International Business Management BA (Hons)  	YOBAF (BM)	105 credits	C (with no component below D)	50%

 Degree option with a year in industry also available.

 Degree option with a year abroad or with overseas experience also available.

* 88 points, GCSE Maths C/4 or equivalent for the extended International Year One pathway

Please note: English level and academic progression requirements are correct to the best of our knowledge at the time of going to print.

In some circumstances, these may change throughout the year and/or courses may be withdrawn - please visit www.intostudy.com/mmu/courses for the most up to date information.

Improve your English language skills to prepare for further academic study

Start date

16 weeks: Aug
1-4 terms: Sep, Jan, Apr, Jun

English language entry requirements

From IELTS 3.0 or equivalent

Age requirement

16 years and above

Class size and hours

Maximum of 16 students

30 learning hours per week, with
25 hours of face-to-face contact

Improve your English language skills for work, socialising and travel

Start date

Jun, Jul, Aug, Sep, Oct, Nov and Dec

English language entry requirements

All English levels, from elementary to upper intermediate

Age requirement

16 years and above

Class size and hours

Maximum of 16 students

20 hours per week on average

English courses

EN Academic English



- › For students who need to increase their IELTS level in order to progress to university. This intensive course offers rapid progress of up to one IELTS band per term.

Course features

- You will learn through face-to-face teaching and online learning to communicate effectively in English and improve your reading, writing, speaking and listening skills.
- A diverse social programme and effective academic content will help you to develop the fluency and confidence you need to progress to further study.
- Access INTO's interactive online learning platform, MyINTO, outside of class to practise your English language skills, complete tasks and engage with classmates.
- Developed in partnership with Cambridge English, the world leader in language assessment, INTO English Language Assessment (IELA) provides a standardised online assessment of all four core language skills throughout your studies. The IELA test is available to you as an additional form of assessment and allows you to choose from a wide range of Higher Education institutions.

EN General English

- › For students who want to increase their confidence in using everyday English for general life, work, socialising and travel in the UK.

Course features

- Build your confidence in core English language skills in everyday situations, from speaking, reading, listening and writing to vocabulary and grammar.
- Year-round courses have flexible start dates and course lengths, from 2-48 weeks. Take part in a range of activities and socialise with students from all over the world to build on your language ability.
- Take part in a range of activities and socialise with students from all over the world to build on your English language ability and make new friends.

Accredited by the

for the teaching
of English in the UK

All our English language courses at INTO Manchester have received accreditation from the British Council.

SUCCESSFUL INTO ALUMNI



“
I don't think I would have progressed without the Foundation as it provided me with the platform to achieve my goal of getting into university. I also received a lot of help from my teachers with my university application and personal statement.

Alina Rusea
Graduated with BA (Hons) Fine Art from Manchester Metropolitan University. Now working as an Art Manager in Russia



“
When I went into Year 2 of my degree, most of the course had already been covered during my International Year One. So for me, it was easy. I already felt prepared, while many of my classmates didn't understand elements.

YinYin, China

Completed an International Year One in International Business, Accounting and Finance, and progressed to BSc (Hons) Business Management at Manchester Metropolitan University

“
Having the opportunity to do an industry placement year at the Walt Disney Company during my degree definitely gave me a competitive edge. It means I graduated with one year's work experience, which I believe is key in today's market.

Jatin, Kuwait

Graduated with BA (Hons) Accounting and Finance with First Class Honours from Manchester Metropolitan University. Now working for global consulting firm, Protiviti, in UAE

Dates and prices

The cost of your programme may vary depending on factors including the pathway chosen and programme length. The following guide to costs is based on pricing for the current academic year and provides an indication of the cost of attendance for some of our pathways. For specific cost information, please refer online: www.intostudy.com/mmu/courses

Estimated cost of attendance based on prices for current academic year 2020-2021

Study length	Tuition	Accommodation	Books and fees	Airport pick up**	Insurance	Total
Academic programmes						
International Foundation (3 term)	£15,650	£5,775-£10,200	£420-£820	£45	£357	£22,547-£27,372
International Foundation (4 term)	£17,995	£8,400-£13,500	£510-£910	£45	£466	£27,371-£32,871
International Year One (3 term)	£15,650	£5,775-£10,200	£420	£45	£357	£22,547-£26,972
International Year One (4 term)	£17,995	£8,400-£13,500	£510	£45	£466	£27,371-£32,471
English language courses						
1 term*	£4,430	£1,925-£2,805	£90	£45	£122	£6,567-£7,447
16 weeks	£7,090	£3,130-£4,550	£130	£45	£145	£10,495-£11,915

Start months and term dates

Academic programmes		Academic English	
June (4 term)	Mon 28 Jun 2021-Fri 17 Jun 2022	August (16 weeks)	Mon 09 Aug 2021-Fri 10 Dec 2021
September (3 term)	Mon 13 Sep 2021-Fri 17 Jun 2022	September (1 term)	Mon 27 Sep 2021-Fri 10 Dec 2021
September (4 term)	Mon 27 Sep 2021-Fri 26 Aug 2022	January (1 term)	Mon 10 Jan 2022-Fri 25 Mar 2022
January (3 term)	Mon 10 Jan 2022-Fri 26 Aug 2022	April (1 term)	Tue 04 Apr 2022-Fri 17 Jun 2022
		June (1 term)	Mon 27 Jun 2022-Fri 09 Sep 2022

Prices shown are for the current academic year of 01 September 2020 - 31 August 2021 and for indicative purposes only. All students who confirm their offer on or before 31 January 2021 will pay the 2020/2021 price as per their existing offer letter. After 31 January 2021, where tuition fees have increased, all current offers will be reissued and students will receive a new offer with the new 2021/2022 pricing. For full details of term dates, please visit the relevant course page at www.intostudy.com/mmu/courses

* The price will depend on your start date and length of study. Prices shown are only for one term.
Vacation weeks in between terms are extra and will be charged at the weekly accommodation price.
** Please note airport pickup is optional and is not included in the total.



Apply via your local INTO educational counsellor

If you would like us to put you in contact with one of our counsellors, please contact us.



Apply online

Complete our online application form: apply.intostudy.com



Need some help with your tuition fees?

Check to see if you're eligible for a scholarship: www.intostudy.com/mmu/scholarships

Discover more online

For students:
www.intostudy.com/mmu
For education counsellors:
partnerportal.intoglobal.com/mmu

Connect with us



Through innovative partnerships with leading universities, we expand opportunities for higher education, ensuring success and transforming the lives of our students and staff.

INTO GIVING

Working across the globe, INTO Giving supports projects that increase access to education and improve the quality of teaching and learning. For more information visit www.into-giving.com

Contact us

Enquiries and applications:
ukes@intoglobal.com
or +44 1273 876040

Visit the Centre:
manchester.marketing@intoglobal.com
or +44 161 631 1200

Centre address details:
INTO Manchester
Bridgewater House
58/60 Whitworth Street
Manchester
M1 6LT
United Kingdom

© INTO Manchester Limited, September 2020. Every effort is made to ensure that content published in this document is correct at the time of publication. However, from time to time there may be occasions where some of the information has changed since the date of publication. The most up to date information can be found on our website at www.intostudy.com/mmu - please refer to this before submitting your application. If, in our opinion, we consider that any change has been made which has a material impact on any offer that has been made to you to study with us, we will inform you of these changes in writing. The information provided in this document is subject to INTO Manchester in partnership with Manchester Metropolitan University's terms and conditions which can be accessed at www.intostudy.com/mmu/terms.

INTO Manchester Limited, 6438137, One Gloucester Place, Brighton, East Sussex, BN1 4AA, UK.

Education provider sponsor number 6FY6FQBVI

Education counsellor's stamp



**Manchester
Metropolitan
University**